



**SOLAR COMPONENTS**

**TGBGROUP**





*we* *move*

---

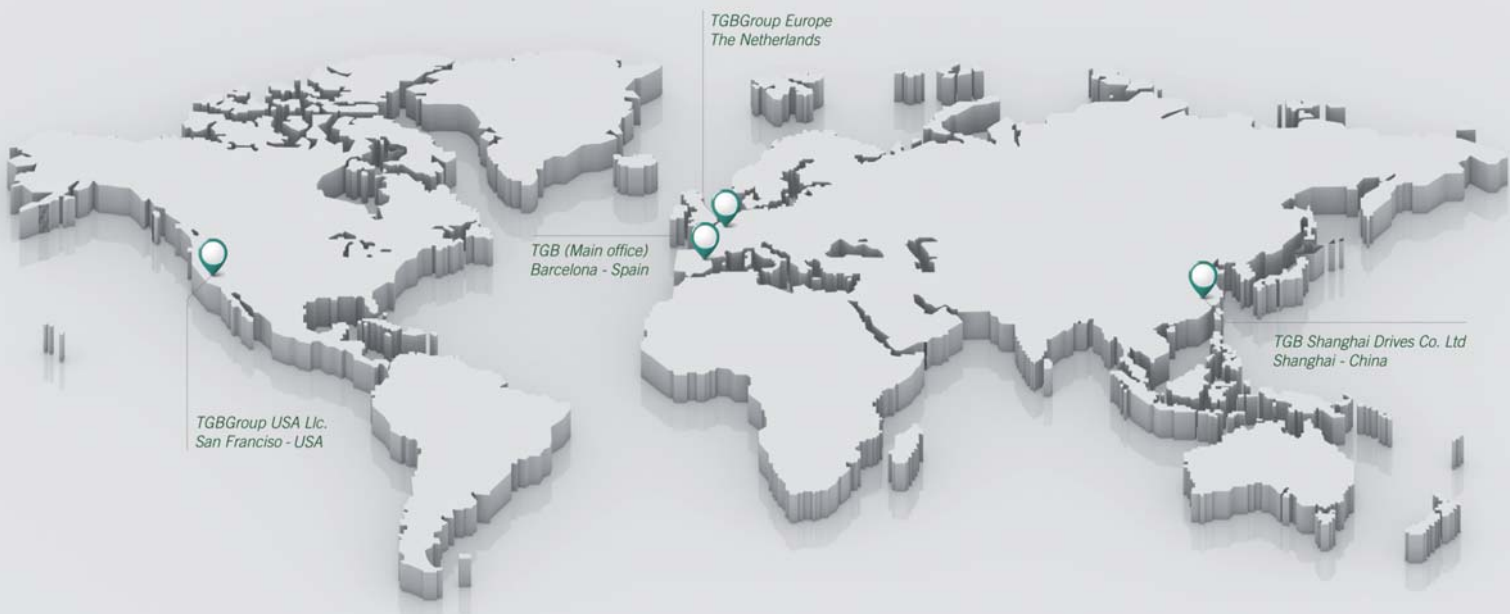
*Your movement solutions*

# TGB GROUP

With more than 20 years experience in business, TGB group is one of the leaders of movement solutions for industrial and energy market . We develop and manufacture Technological products with high standars in realibility and quality, distributed world wide.

With our own Manufacture Facilities located in Asia, and our R+D centre in Europe, we are able to provide competitive solutions, based on customized projects, and keep flexibility on deliveries, accommodating any volume requested by our customers.

We keep the spirit of continuous improvement, and we focus our strategy to support our customers plans and follow the market trend on technology and quality. We Move your movement solutions...



# INDEX

---

APPLICATION EXAMPLES .....	6
SLEW DRIVES .....	9
BASIC INSTRUCTIONS .....	10
STANDARD SERIES .....	12
VERTICAL SERIES .....	20
DUAL AXIS SERIES .....	23
ACCESSORIES .....	26



[www.tgb-group.com](http://www.tgb-group.com)

Ed. 1 (SEP-14)

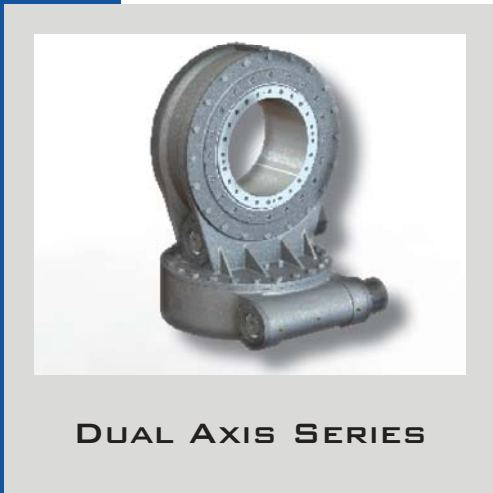
# APPLICATION EXAMPLES



**STANDARD SERIES**



**VERTICAL SERIES**

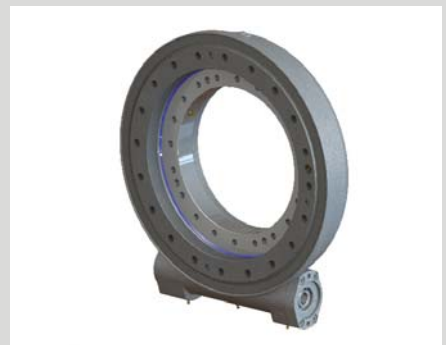


**DUAL AXIS SERIES**

# APPLICATION EXAMPLES



**VERTICAL SERIES**



**STANDARD SERIES**



**STANDARD SERIES**







# SLEW DRIVES

---



# BASIC INSTRUCTIONS

## 1. SLEWING DRIVES CHARACTERISTICS

Slewing drives present some characteristics that should be taken into account to choose the proper series for each application. The main points to consider are the ones following:

- The maximum output speed must be less than 1rpm.
- The standard temperature working range of a slewing drive is established between -20 and 70°C.
- The slewing drives can be used both in horizontal and in vertical position. In case installing it in vertical position please consult the TGBgroup Technical department.
- The load diagrams for each drive show its limit static load with a safety factor of 1. TGBgroup recommends adding an application factor to the loads according to the following table. To assure the drive chosen is the right one, the load case of the application must be below the limit curve.

Application	Application criteria	Application factor
Casting	Extreme application	1.5
Machines for building / cranes	Extreme application	1.25
Vehicles and mounting on vehicles	Extreme application	1.25
Forklifts / Bulldozers	Light shocks	1.1
Treatment plants	Vibrations	1.25
Wind turbines	Danger of streaking	2.0
Robots	Rigidity	1.25
Antennas	Precision	1.5
Machines-tool	Precision	1.5
Measurement technique	Smooth operation	2.0

The load diagrams are also limited by the bolts. They are only valid if all the bolts of the slewing drive are used to fix it to the structure. The quality of the bolts is considered grade 10.9, the threaded length should be at least 1.5 times the bolt diameter and the recommended flange thickness 2 times the bolt diameter. If the bolt curve does not appear in the chart, this means that this curve is above the slewing ring chart.

In case you have questions regarding the application for breach of any point of the ones mentioned above or various load cases are applied, we recommend contacting TGBgroup Technical Department. In case the slewing drive chosen does not adapt to your application we recommend consulting the slewing ring catalogue, as there exist a major variety of products and features.

## 2. TRANSPORT, HANDLING AND STORAGE

Transport only in horizontal position avoiding possible impacts. The vertical series should be transported and stored in vertical position. The slewing drive should be manipulated carefully and wearing working gloves all the time. The threaded holes can be used to fix bolts to handle the slewing drive in a safety way with a hoisting device. Store always in horizontal position and in closed rooms.

### 3. INSTALLATION

Previous to the installation, a cleaning of the slewing drive and the structure where is going to be mounted must be done. It is not allowed the use of steam high pressure systems. It should be checked that the slewing drive is fully supported by the structure. The supporting surface must accomplish some requirements considering a maximum flatness deviation. The slewing drive must be mounted without any external loads. It is convenient to perform working tests in the structure before the loads are applied. The bolts used must be from the dimension, quantity and quality indicated.

### 4. LUBRICATION

For all applications a proper lubrication is necessary for a smooth operation of the slewing drive. There are three parts that need to be lubricated: the slewing ring raceway, the screw worm and the bearings. The quantity of grease required is around 60cc for the screw worm, 10cc for each tapered roller bearing and 10cc each 250mm of diameter for the slewing ring raceway. The procedure to regrease consists in injecting grease into all grease nipples one after the other while rotating the slewing drive. The slewing drives must be regreased after each cleaning and also before and after large periods of inactivity.

Re-lubrication is needed to assure a minimum quality on the grease inside the drive. In case no comparative results are available, the following table can be used as a reference.

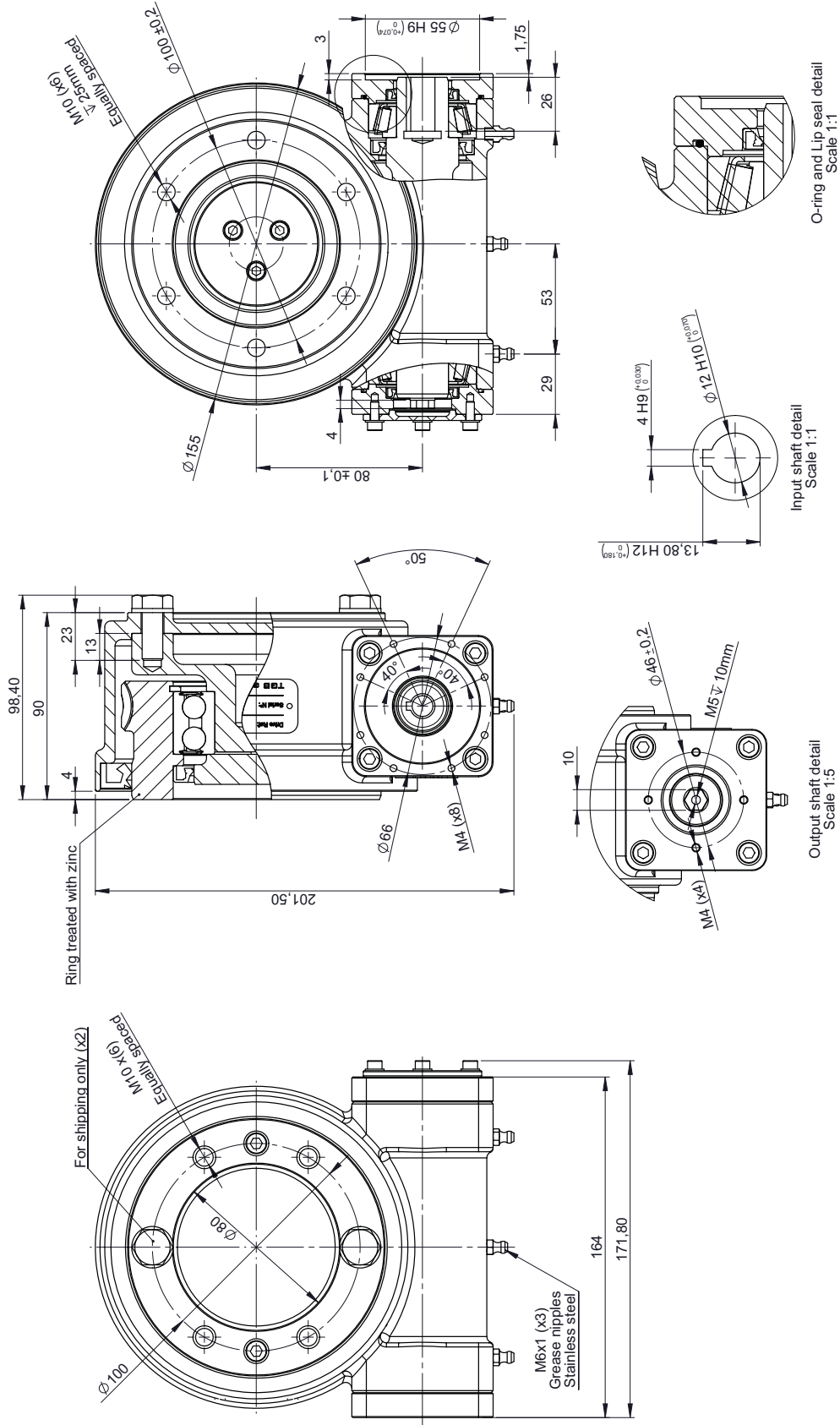
Working conditions	Slewing Ring and Screw Worm Re-lubrication intervals
Rotational speeds <0,5rpm Non extreme environmental conditions (solar trackers)	Every 400 hours of operation or once every 12 months
Rotational speeds >0,5rpm Non extreme environmental conditions (man lift, industrial applications)	Every 200 hours of operation or once every 6 months
Extreme climatic conditions (sea / desert / Arctic climate / very dirty surrounding) (tunnelling machines/steel mills)	Every 100 hours of operation or once every 3 months
Bearing re-lubrication intervals	
All working conditions	Every 400 hours or every 12months

To choose the proper type of grease for each application, please contact TGBgroup technical department.

### 5. MAINTENANCE / SECURITY CONTROLS

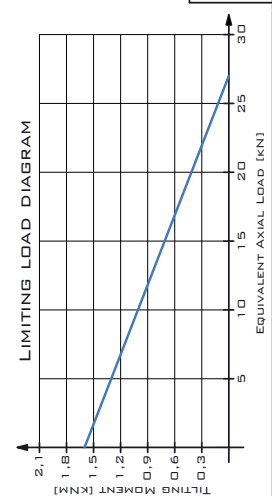
TGBgroup recommends retightening the bolts to the prescribed torque after no more than 100 working hours to compensate the possible settling. This should be done without external loads applied on the bolts union. This inspection should be repeated from then on every 3 months of working. The frequency of the inspection must be reduced under special working conditions.

# STANDARD SERIES



 TGB GROUP 1755, 1756, 1757, 1758, 1759, 1760, 1761, 1762, 1763, 1764, 1765, 1766, 1767, 1768, 1769, 1770, 1771, 1772, 1773, 1774, 1775, 1776, 1777, 1778, 1779, 1780, 1781, 1782, 1783, 1784, 1785, 1786, 1787, 1788, 1789, 1790, 1791, 1792, 1793, 1794, 1795, 1796, 1797, 1798, 1799, 1800 www.tgbgroup.es	
Reference >1200 ±1.2 >400.0 - 1200 ±0.8 >120.0 - 400.0 ±0.5 >30.0 - 120.0 ±0.3 >6.0 - 30.0 ±0.2 >3.0 - 6.0 ±0.1 >0.3 - 3.0 ±0.1 Range of sizes Minimum Maximum	Denomination Sales Drawing BE130-Z0-RM
Unit: mm The information contained in this document is property of TGB Group. It is not allowable any copy or reproduction of this certified copy without the prior written consent of TGB Group. TGB Group assumes no responsibility for any errors or omissions and without previous advice and duty of communication.	MATERIAL: - SCALE: - WEIGHT [kg]: 10.40 NUM. PIECES: 1 SIZE: - SHEET: 1 of 1

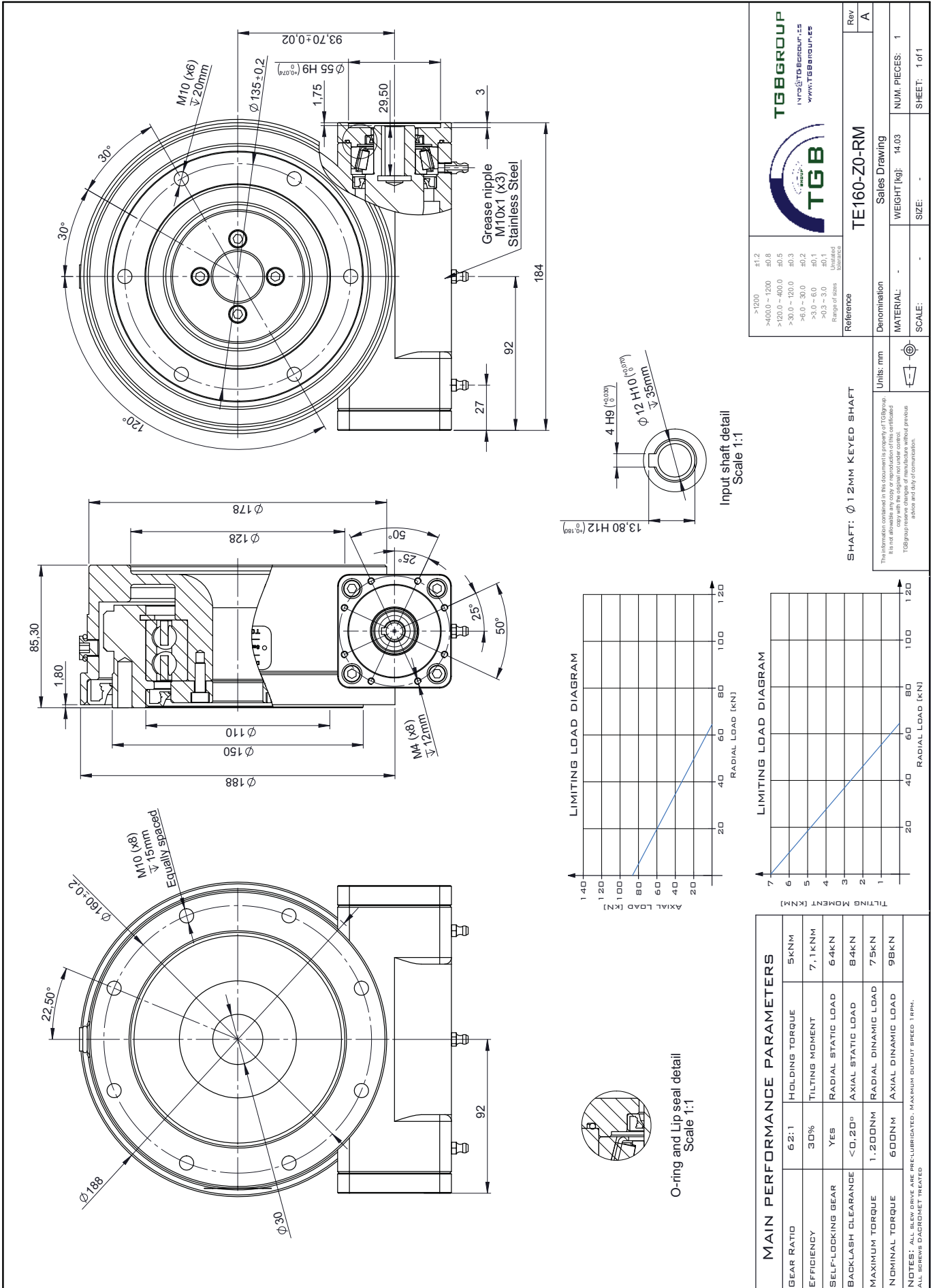
SHAFT: Ø 1.2MM KEYS SHAFT



MAIN PERFORMANCE PARAMETERS	
GEAR RATIO	62:1
HOLDING TORQUE	950NM
EFFICIENCY	30%
TILTING MOMENT	1.6KNM
SELF-LOCKING GEAR	YES
RADIAL STATIC LOAD	15KN
AXIAL STATIC LOAD	27KN
BACKLASH CLEARANCE	<0.10°
RADIAL DYNAMIC LOAD	7.6KN
MAXIMUM TORQUE	800NM
AXIAL DYNAMIC LOAD	8.7KN
NOMINAL TORQUE	400NM
AXIAL DYNAMIC LOAD	8.7KN

NOTES: ALL BLEW DRIVE ARE PRELUBRICATED. MAXIMUM OUTPUT SPEED 1000 RPM. LOADS VALID FOR 10,000 WORKING HOURS (A.T.O.D.5000H). ALL SERIES DACTORMET TREATED.

# STANDARD SERIES



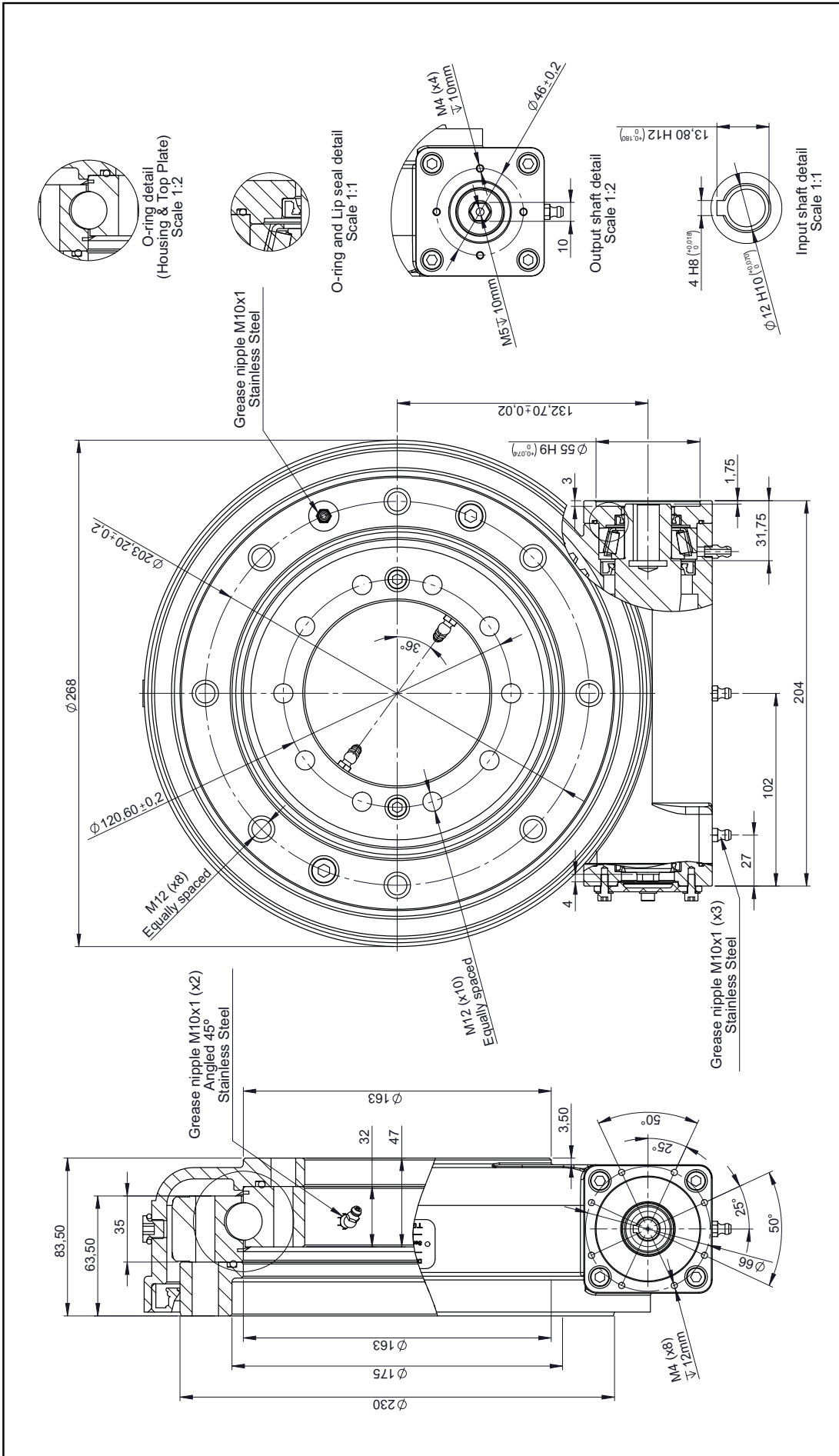
<p>TGB GROUP          INFO@TGBGROUP.COM          WWW.TGBGROUP.COM</p>		Rev. A
<p>TE160-Z0-RM</p>		
Denomination	Sales Drawing	
MATERIAL:	WEIGHT [kg]: 14.03	NUM. PIECES: 1
SCALE:	SIZE:	SHEET: 1 of 1
Units: mm This information contained in this document is property of TGB Group. It is not allowable any copy or reproduction of this confidential TGB group preserve all rights of manufacturers without previous advice and duty of communication.		

MAIN PERFORMANCE PARAMETERS			
GEAR RATIO	62:1	HOLDING TORQUE	5KNM
EFFICIENCY	30%	TILTING MOMENT	7.1KNM
SELF-LOCKING GEAR	YES	RADIAL STATIC LOAD	64KN
BACKLASH CLEARANCE	<0.20°	AXIAL STATIC LOAD	84KN
MAXIMUM TORQUE	1.200NM	RADIAL DYNAMIC LOAD	75KN
NOMINAL TORQUE	600NM	AXIAL DYNAMIC LOAD	98KN

NOTES: ALL BLEW DRIVE ARE PRELUBRICATED. MAXIMUM OUTPUT SPEED 1100 RPM.  
 ALL SCREWS DACTONET-TREATED

# STANDARD SERIES

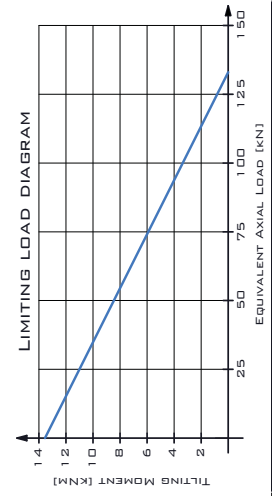


 TGB GROUP 1 rue de TEBEROUR, 25 www.TGBgroup.fr		Reference <b>TE236-Z0-RM</b>	Denomination Sales Drawing
> 1200 > 400.0 - 1200 > 120.0 - 400.0 > 30.0 - 120.0 > 6.0 - 30.0 > 3.0 - 6.0 > 0.3 - 3.0 Range of sizes.	+1.2 ±0.8 ±0.5 ±0.3 ±0.2 ±0.1 ±0.1 Minimum tolerance	MATERIAL: - SCALE: -	WEIGHT [kg]: 20.29 NUM. PIECES: 1 SIZE: - SHEET: 1 of 1

**SHAFT:  $\varnothing 12 \text{ MM}$  KEYED SHAFT**

Units: mm

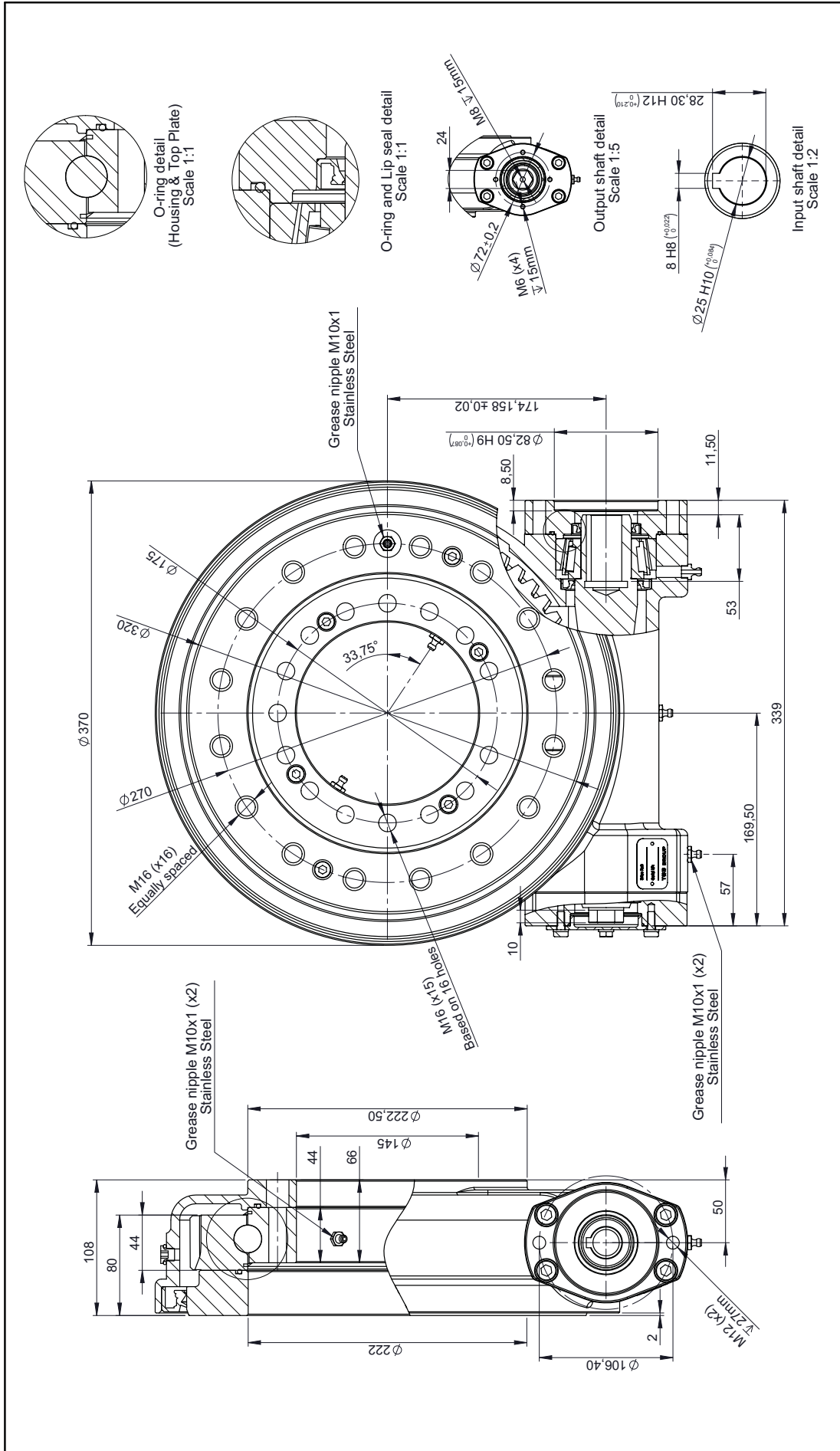
This information contained in this document is the property of TGB group. It is not allowed to copy or reproduce it without the written consent of TGB group. TGB group reserves the right to change its products without previous notice and without any communication.



MAIN PERFORMANCE PARAMETERS	
GEAR RATIO	71:1
HOLDING TORQUE	9.4 kNm
EFFICIENCY	40%
TILTING MOMENT	13.6 kNm
SELF-LOCKING GEAR	YES
RADIAL STATIC LOAD	53 kN
BACKLASH CLEARANCE	< 0.20°
AXIAL STATIC LOAD	1.33 kN
MAXIMUM TORQUE	1.458 Nm
RADIAL DYNAMIC LOAD	28 kN
NOMINAL TORQUE	1.042 Nm
AXIAL DYNAMIC LOAD	32 kN

NOTES: ALL BEW DRIVE ARE PRELUBRICATED - MAXIMUM OUTPUT SPEED 1 RPM.  
ALL BEW'S "DAGROHIE" TREATED

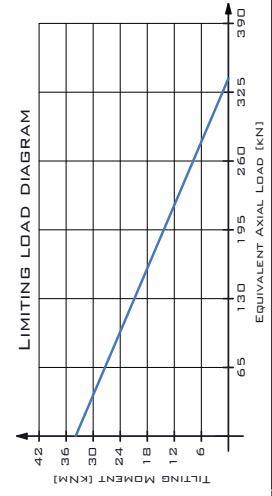
# STANDARD SERIES



 TGB GROUP 1755@TGBGROUP.CO WWW.TGBGROUP.CO	
>1200 ±1.2 >400.0 - 1200 ±0.8 >120.0 - 400.0 ±0.5 >30.0 - 120.0 ±0.3 >6.0 - 30.0 ±0.2 >3.0 - 6.0 ±0.1 >0.3 - 3.0 ±0.1 Range of sizes tolerance	Reference TE314-Z0-RM
Denomination Sales drawing	Rev A
MATERIAL: -	WEIGHT [kg]: 48.85
SCALE: -	NUM. PIECES: 1
SIZE: -	SHEET: 1 of 1

**SHAFT:  $\phi 25mm$  KEYS SHAFT**  
**FLANGE: SAE - 2BOLT FLANGE**

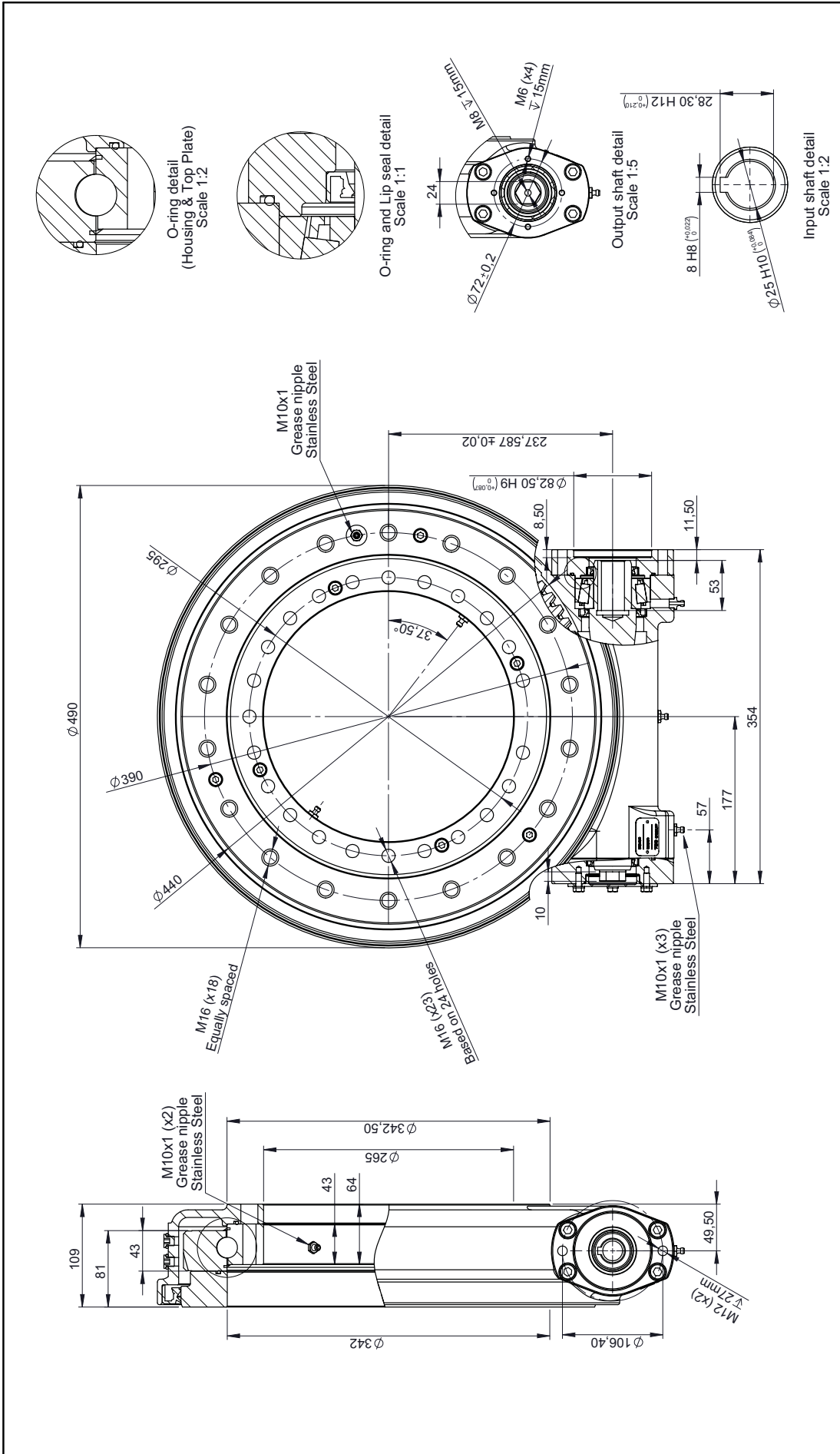
The information contained in this document is property of TGB Group.  
 It is not allowable any copy or reproduction of this certified  
 TGB Group may be made or manufactured without previous  
 advice and a duly of communication.



MAIN PERFORMANCE PARAMETERS	
GEAR RATIO	6:1:1
EFFICIENCY	40%
SELF-LOCKING GEAR	YES
BACKLASH CLEARANCE	<0.17°
MAXIMUM TORQUE	8.835NM
NOMINAL TORQUE	7.320NM
HOLDING TORQUE	35KNM
TILTING MOMENT	33.9KNM
RADIAL STATIC LOAD	135KN
AXIAL STATIC LOAD	398KN
RADIAL DYNAMIC LOAD	71KN
AXIAL DYNAMIC LOAD	81KN

NOTES: ALL BEW DRIVE ARE PRE-LUBRICATED. MAXIMUM OUTPUT SPEED 1800RPM.  
 ALL BEW DRIVE TREATED

# STANDARD SERIES



www.tgbsales.com  
www.tgbrs.com

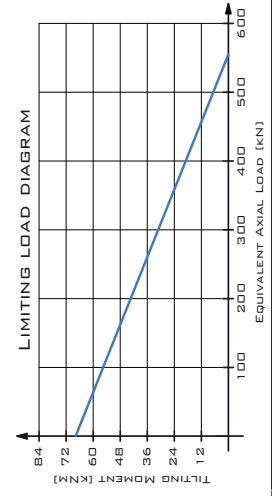
**TE435-Z0-RM**

Rev A

>1200 ±1.2 >400.0 - 1200 ±0.8 >120.0 - 400.0 ±0.5 >30.0 - 120.0 ±0.3 >6.0 - 30.0 ±0.2 >3.0 - 6.0 ±0.1 >0.3 - 3.0 ±0.1 Range of sizes tolerance	Denomination <b>Sales Drawing</b>	NUM. PIECES: 1	SHEET: 1 of 1
Reference <b>TE435-Z0-RM</b>	Denomination <b>Sales Drawing</b>	WEIGHT [kg]: 69.89	SIZE: -
Unit: mm	MATERIAL:	SCALE: -	

**SHAFT: Ø25MM KEYS SHAFT  
FLANGE: SAE - 2BOLT FLANGE**

The information contained in this document is property of TGB Group. It is not allowed any copy or reproduction of this certified TGB Group logo or any other information without previous advice and duty of communication.

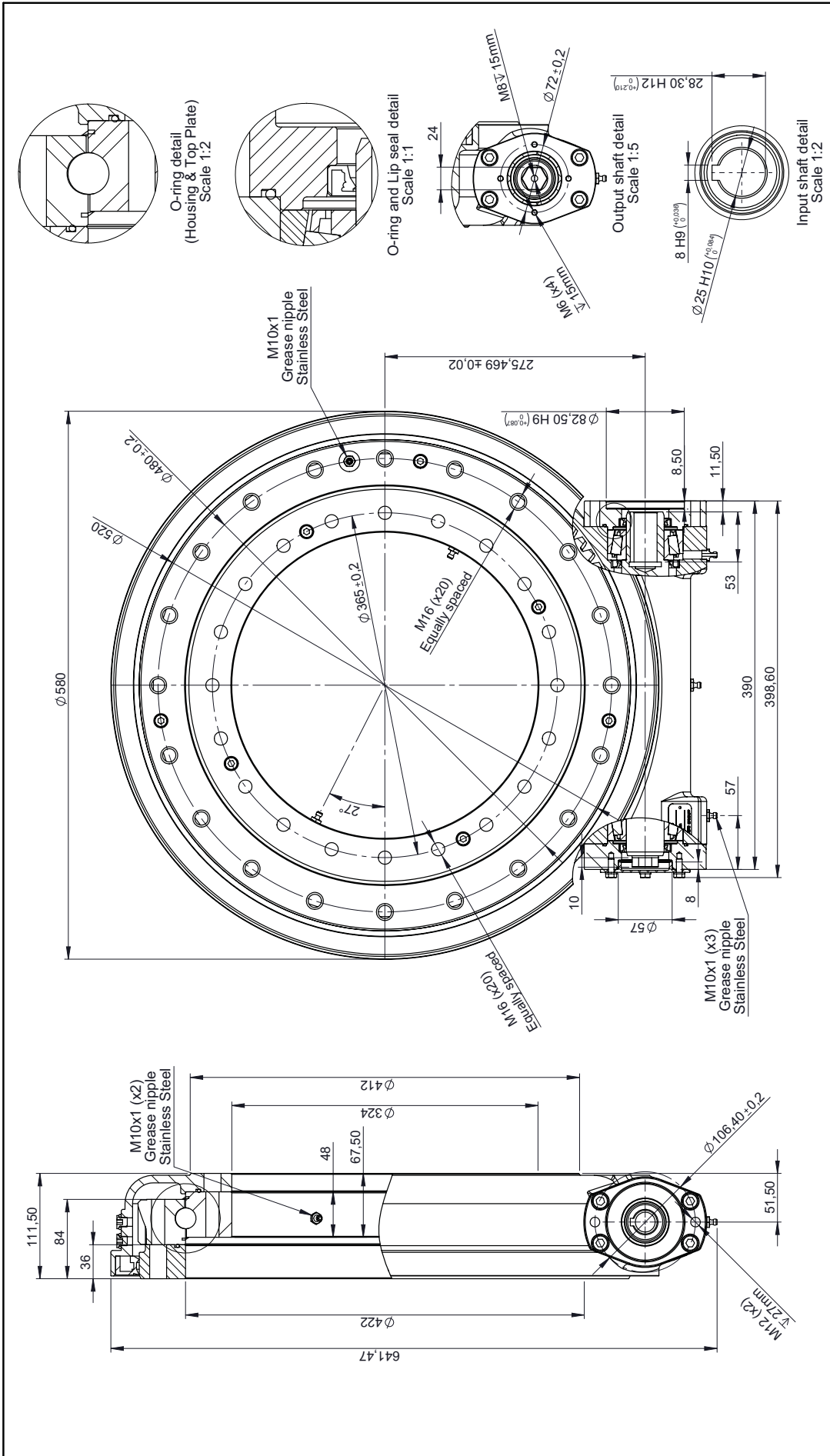


MAIN PERFORMANCE PARAMETERS	
GEAR RATIO	85:1
HOLDING TORQUE	43.2kNm
EFFICIENCY	40%
TILTING MOMENT	67.8kNm
SELF-LOCKING GEAR	YES
RADIAL STATIC LOAD	22.2kN
BACKLASH CLEARANCE	<0.17°
AXIAL STATIC LOAD	55.5kN
MAXIMUM TORQUE	12.308Nm
RADIAL DYNAMIC LOAD	11.7kN
NOMINAL TORQUE	10.200Nm
AXIAL DYNAMIC LOAD	1.93kN

NOTES: ALL BEW DRIVE ARE PRE-LUBRICATED. MAXIMUM OUTPUT SPEED 1800 RPM.  
ALL BEW DRIVE ARE PRE-LUBRICATED.



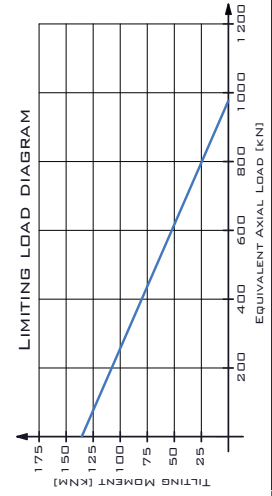
# STANDARD SERIES



 TGB GROUP 17 rue de Valenciennes www.tgbrouteurs.fr	
<b>Reference</b> TE523-Z0-RM	
<b>Denomination</b> Sales Drawing	
<b>MATERIAL:</b> -	
<b>WEIGHT [kg]:</b> 94.52	
<b>NUM. PIECES:</b> 1	
<b>SIZE:</b> -	
<b>SHEET:</b> 1 of 1	

**SHAFT: Ø 25MM KEYS SHAFT**  
**FLANGE: SAE - 2 BOLT FLANGE**

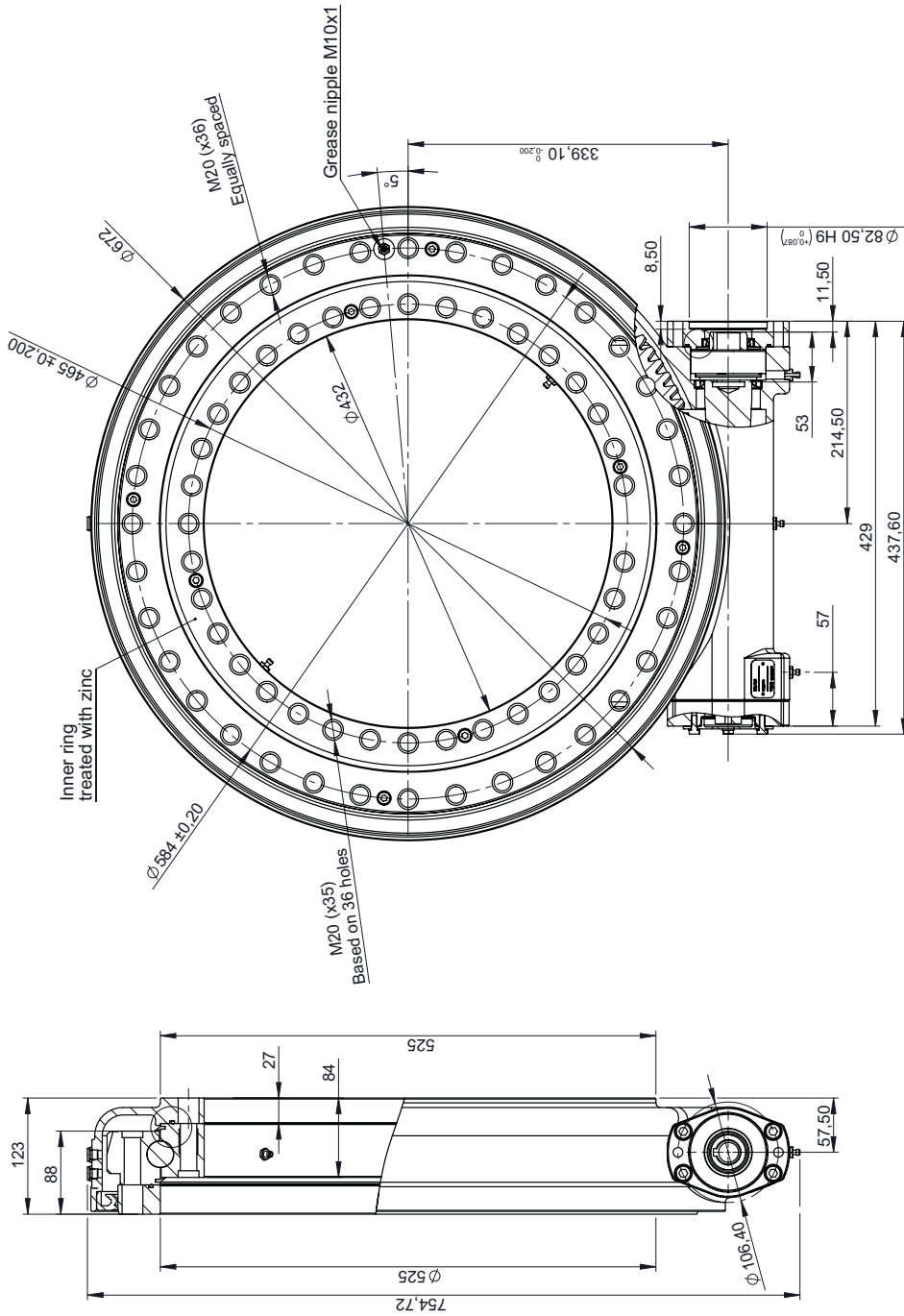
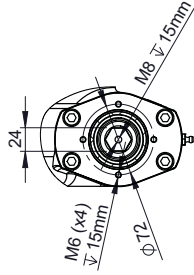
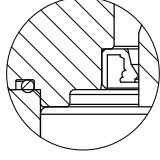
This information contained in this document is the property of TGB group. It is not allowed to copy or reproduce it without the written consent of TGB group. Any change of manufacturing without previous advice and duty of communication.



MAIN PERFORMANCE PARAMETERS	
GEAR RATIO	102:1
HOLDING TORQUE	65.1kNm
EFFICIENCY	40%
TILTING MOMENT	135.6kNm
SELF-LOCKING GEAR	YES
RADIAL STATIC LOAD	391kN
BACKLASH CLEARANCE	<0.15°
AXIAL STATIC LOAD	977kN
MAXIMUM TORQUE	18,034Nm
RADIAL DYNAMIC LOAD	209kN
NOMINAL TORQUE	15,096Nm
AXIAL DYNAMIC LOAD	235kN

NOTES: ALL BEW DRIVE ARE PRELUBRICATED. MAXIMUM OUTPUT SPEED 1800 RPM.  
 ALL BEWES DAGROMET TREATED

# STANDARD SERIES

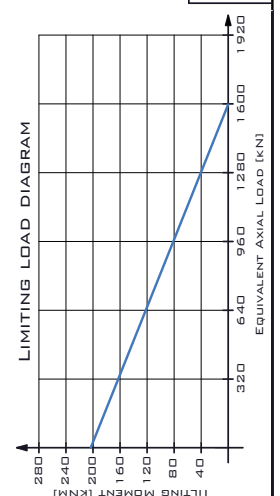


 TGB GROUP 117550178@tbsbearbur.rs WWW.TBSBEARBUR.RS	
<b>TE639-Z0-RM</b>	
Reference	Rev
Denomination	A
Sales Drawing	
WEIGHT (kg):	NUM. PIECES: 1
118.54	
SIZE:	SHEET: 1 of 1

Units: mm

SHAFT:  $\varnothing 25$ MM KEYED SHAFT  
FLANGE: SAE - 2 BOLT FLANGE

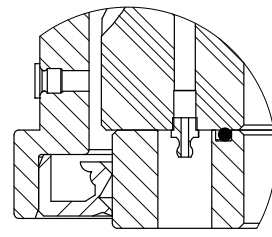
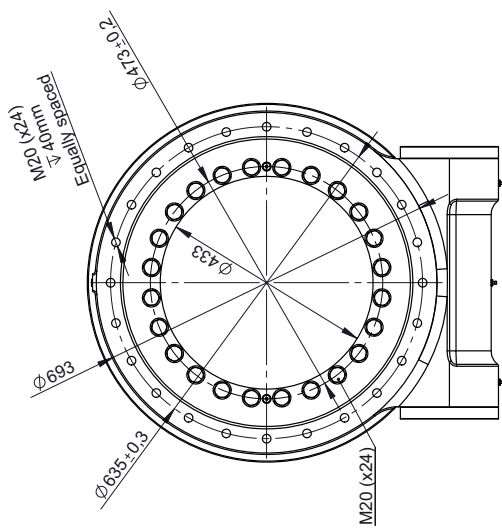
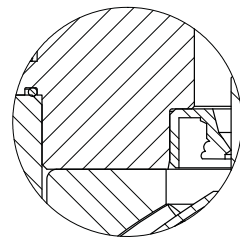
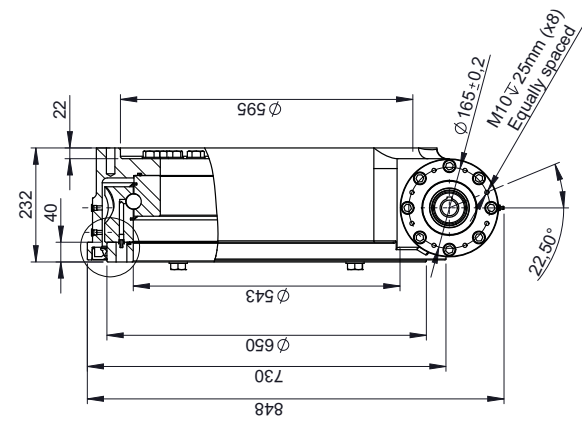
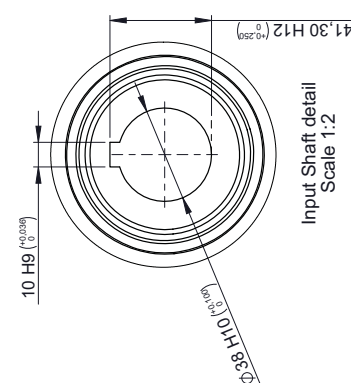
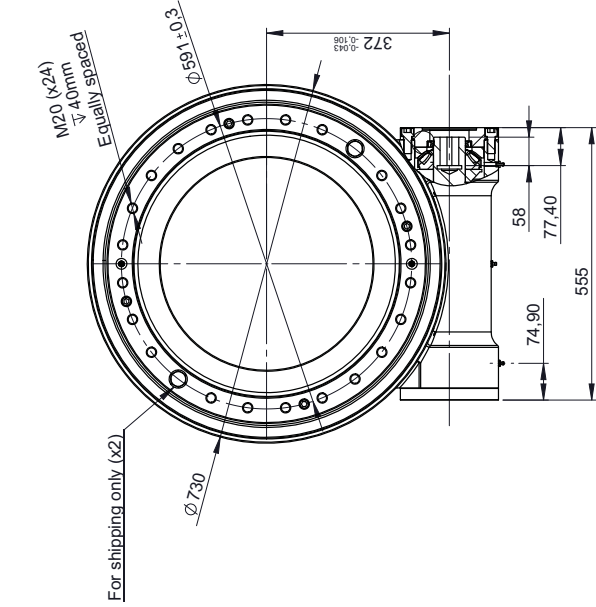
This information contained in this document is property of TGB group.  
It is not allowable any copy or reproduction of this certified  
TGB group reserves the right of modification of this document without previous  
notice and duty of communication.



MAIN PERFORMANCE PARAMETERS	
GEAR RATIO	1.25:1
HOLDING TORQUE	95.2kNm
EFFICIENCY	40%
TILTING MOMENT	203.4kNm
SELF-LOCKING GEAR	YES
RADIAL STATIC LOAD	640kN
AXIAL STATIC LOAD	1.598kN
BACKLASH CLEARANCE	< 0.15°
RADIAL DYNAMIC LOAD	336kN
MAXIMUM TORQUE	30.500Nm
AXIAL DYNAMIC LOAD	384kN
NOMINAL TORQUE	23.500Nm
AXIAL DYNAMIC LOAD	384kN

NOTES: ALL BEW DRIVE ARE PRELUBRICATED - MAXIMUM OUTPUT SPEED 1800 RPM.

# STANDARD SERIES



**TGB GROUP**  
info@tgbgroup.com  
www.tgbgroup.com

**DADA8R-Z0-RM**

Reference: 

> 1000	±1.2
> 400.0 - 1200	±0.8
> 120.0 - 400.0	±0.5
> 30.0 - 120.0	±0.3
> 6.0 - 30.0	±0.2
> 3.0 - 6.0	±0.1
> 0.3 - 3.0	±0.1

Range of sizes: **Minimum tolerance**

**SHAFT: Ø38MM KEYSHAFT**

This information contained in this document is the property of TGB Group. It is not allowable any copy or reproduction of this certified TGB group reserves the right of modification of manufacturing without previous advice and duty of communication.

Denomination: **Sales Drawing**

Units: mm

MATERIAL: -

WEIGHT (kg): 360.52

NUM. PIECES: 1

SCALE: -

SIZE: -

Rev: **A**

**MAIN PERFORMANCE PARAMETERS**

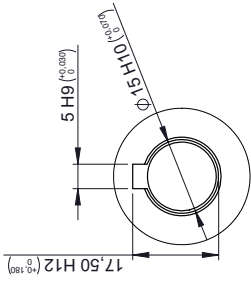
GEAR RATIO	80:1	HOLDING TORQUE	110KNM
EFFICIENCY	30%	TILTING MOMENT	203.4KNM
SELF-LOCKING GEAR	YES	RADIAL STATIC LOAD	640KN
BACKLASH CLEARANCE	< 0.05°	AXIAL STATIC LOAD	1.598KN
MAXIMUM TORQUE	100KNM	RADIAL DYNAMIC LOAD	336KN
NOMINAL TORQUE	75KNM	AXIAL DYNAMIC LOAD	384KN

NOTES: ALL BLEW DRIVE ARE PRELUBRICATED. MAXIMUM OUTPUT SPEED 18RPM.

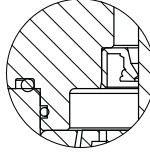
**LIMITING LOAD DIAGRAM**

Equivalent Axial Load (kN)	Tilting Moment (KNM)
0	0
500	200
1000	400
1500	600
2000	800
2500	1000
3000	0

# VERTICAL SERIES



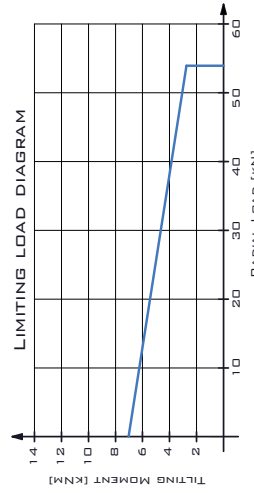
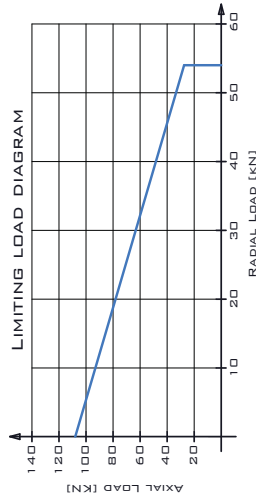
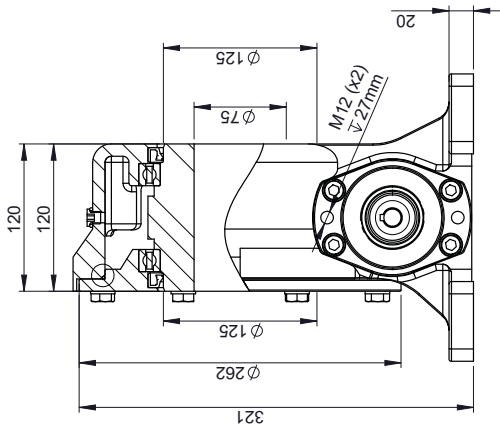
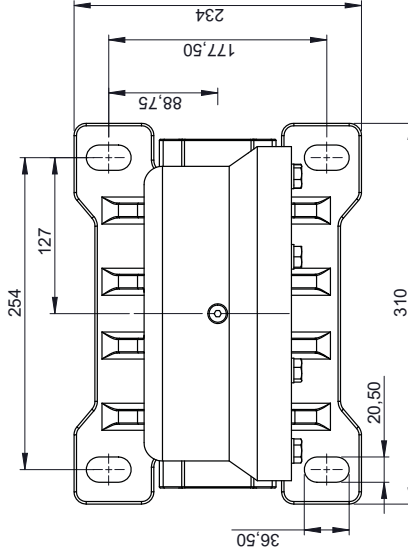
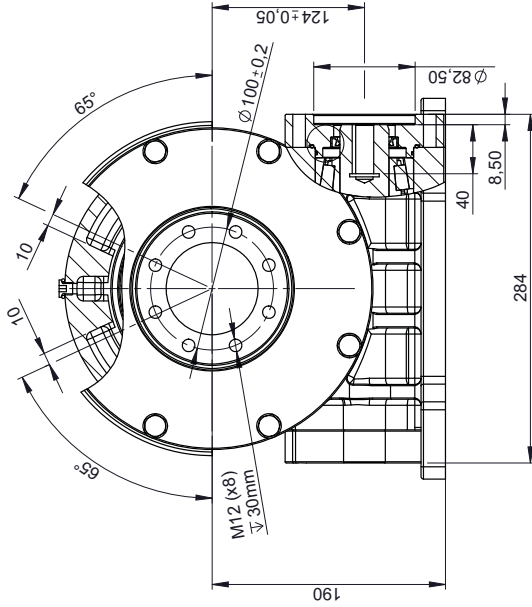
Input shaft detail  
Scale 1:1



O-ring and Lip seal detail  
Scale 1:1



O-ring on Top Plate detail  
Scale 1:1



MAIN PERFORMANCE PARAMETERS			
GEAR RATIO	40:1	HOLDING TORQUE	28kNm
EFFICIENCY	40%	TILTING MOMENT	7kNm
SELF-LOCKING GEAR	YES	RADIAL STATIC LOAD	54kN
BACKLASH CLEARANCE	< 0.20°	AXIAL STATIC LOAD	108kN
MAXIMUM TORQUE	9,600Nm	RADIAL DYNAMIC LOAD	49kN
NOMINAL TORQUE	7,000Nm	AXIAL DYNAMIC LOAD	98kN

NOTES: ALL BLEW DRIVE ARE PRELUBRICATED - MAXIMUM OUTPUT SPEED 1RPM.  
ALL SERVO D'ACHRIE TRÉATÉ

SHAFT: Ø 15MM KEYS SHAF  
FLANGE: SAE - 2BOLT FLANGE

This information contained in this document is the property of TGB Group. It is not allowable any copy or reproduction of this certified information without the prior written consent of TGB Group. TGB Group reserves the right to change the specifications of its products without previous notice and without liability of communication.

TGB GROUP  
11 rue de Tilsbourc, 55  
www.TGBgroup.fr

Reference: TVR200-Z0-RM

Denomination: Sales Drawing

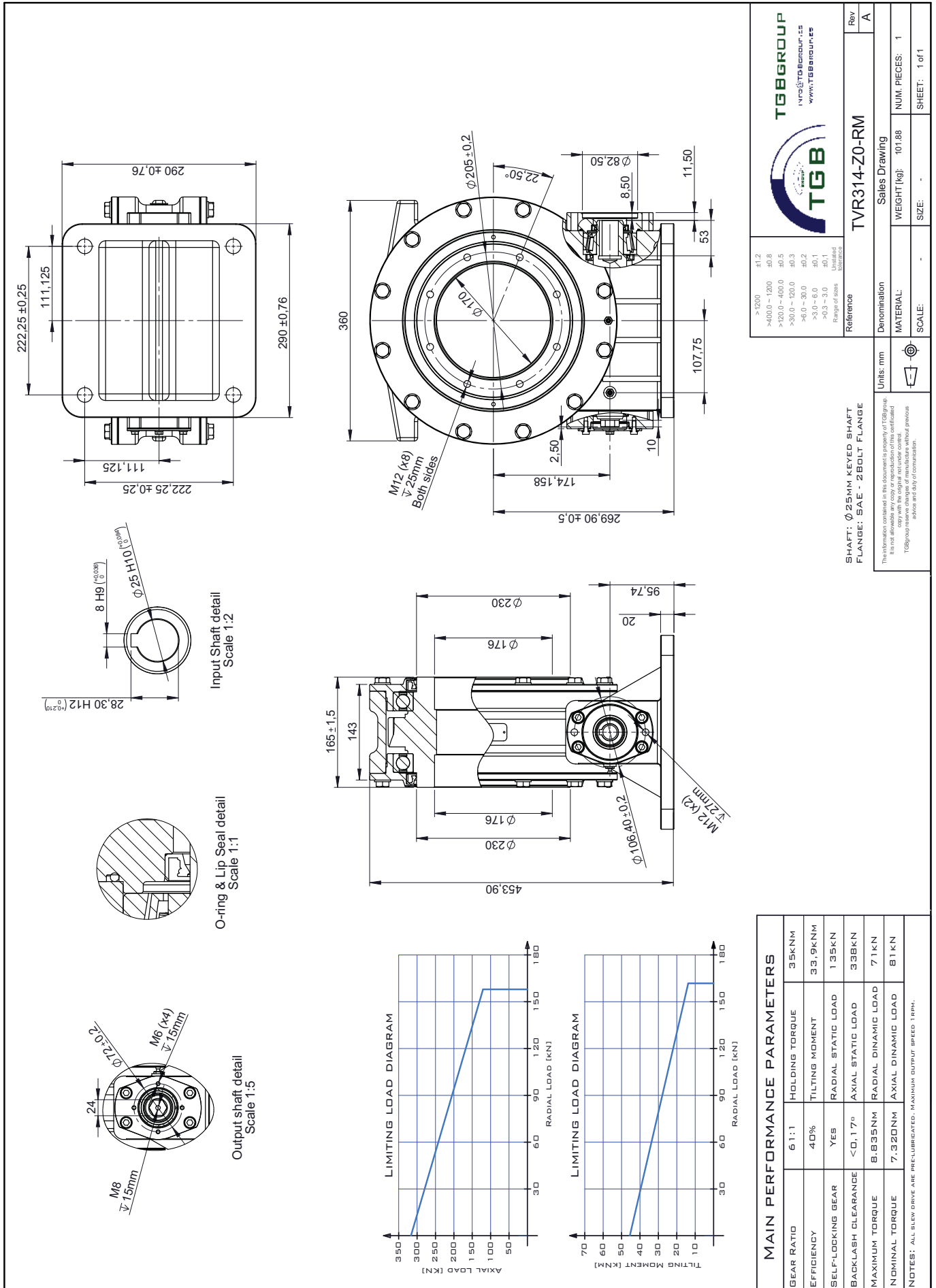
MATERIAL: - WEIGHT [kg]: 46.22

SCALE: - SIZE: -

NUM. PIECES: 1

SHEET: 1 of 1

# VERTICAL SERIES



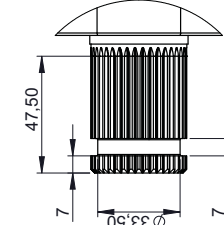
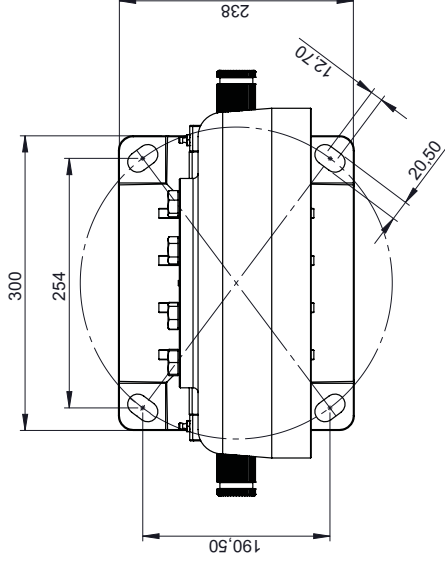
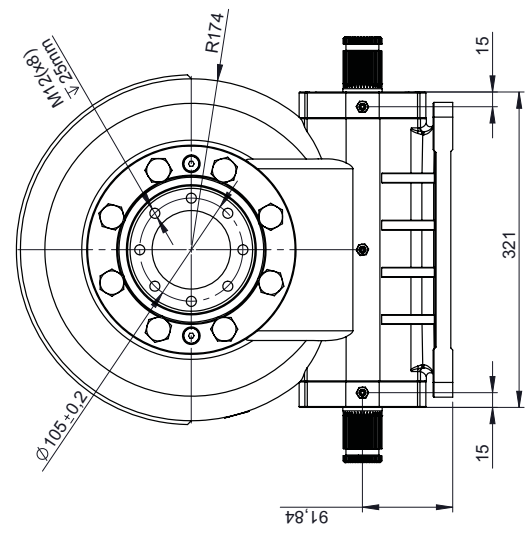
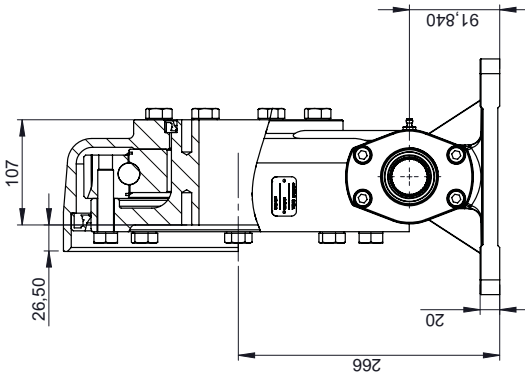
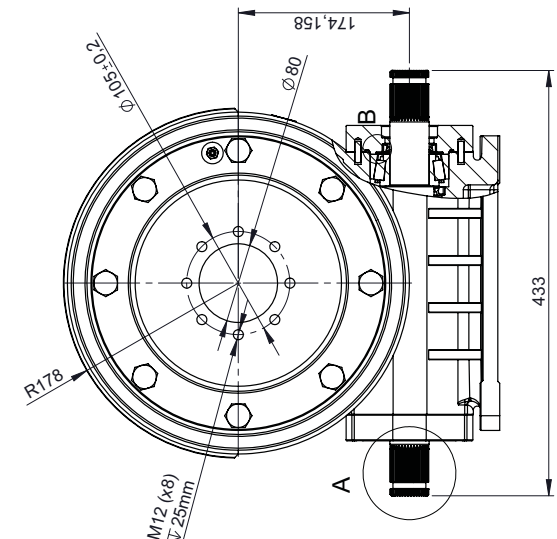
<p><b>TGB GROUP</b>  <a href="mailto:info@tgbgroup.com">info@tgbgroup.com</a>  <a href="http://www.tgbgroup.com">www.tgbgroup.com</a></p>															
<table border="1"> <tr> <td>&gt; 1200</td> <td>±1.2</td> </tr> <tr> <td>&gt;400.0 - 1200</td> <td>±0.8</td> </tr> <tr> <td>&gt;120.0 - 400.0</td> <td>±0.5</td> </tr> <tr> <td>&gt;30.0 - 120.0</td> <td>±0.3</td> </tr> <tr> <td>&gt;6.0 - 30.0</td> <td>±0.2</td> </tr> <tr> <td>&gt;3.0 - 6.0</td> <td>±0.1</td> </tr> <tr> <td>&gt;0.3 - 3.0</td> <td>±0.1</td> </tr> </table> <p>Range of sizes Minimums</p>	> 1200	±1.2	>400.0 - 1200	±0.8	>120.0 - 400.0	±0.5	>30.0 - 120.0	±0.3	>6.0 - 30.0	±0.2	>3.0 - 6.0	±0.1	>0.3 - 3.0	±0.1	<p>Reference: <b>TVR314-Z0-RM</b></p> <p>Denomination: <b>Sales Drawing</b></p> <p>MATERIAL: <b>101.88</b></p> <p>WEIGHT [kg]: <b>101.88</b></p> <p>NUM. PIECES: <b>1</b></p> <p>SCALE: <b>-</b></p> <p>SIZE: <b>-</b></p> <p>SHEET: <b>1 of 1</b></p>
> 1200	±1.2														
>400.0 - 1200	±0.8														
>120.0 - 400.0	±0.5														
>30.0 - 120.0	±0.3														
>6.0 - 30.0	±0.2														
>3.0 - 6.0	±0.1														
>0.3 - 3.0	±0.1														

<p>Units: mm</p> <p>SHAFT: <b>Ø25MM KEYS SHAF</b></p> <p>FLANGE: <b>SAE - 2BOLT FLANGE</b></p> <p>This information contained in this document is the property of TGB Group. It is not allowable any copy or reproduction of this certified information without the prior written consent of TGB Group. TGB Group reserves the right to change its products without previous notice and without liability of communication.</p>	<p>Rev: <b>A</b></p>
--	----------------------

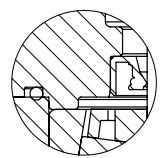
MAIN PERFORMANCE PARAMETERS			
GEAR RATIO	6:1:1	HOLDING TORQUE	35KNM
EFFICIENCY	40%	TILTING MOMENT	33.9KNM
SELF-LOCKING GEAR	YES	RADIAL STATIC LOAD	135KN
BACKLASH CLEARANCE	<0.17°	AXIAL STATIC LOAD	338KN
MAXIMUM TORQUE	8.835NM	RADIAL DYNAMIC LOAD	71KN
NOMINAL TORQUE	7.320NM	AXIAL DYNAMIC LOAD	81KN

NOTES: ALL BLEW DRIVE ARE PRELUBRICATED - MAXIMUM OUTPUT SPEED 18PM.

# VERTICAL SERIES



DETAIL A  
SCALE 1 : 2



DETAIL B  
SCALE 1 : 1

**TGB GROUP**  
 info@tgbgroup.com  
 www.tgbgroup.com

**TGZ314-Z0-DM**

Denomination: Sales Drawing  
 WEIGHT [kg]: 73.03  
 NUM. PIECES: 1  
 MATERIAL: -  
 SCALE: -  
 SIZE: -  
 SHEET: 1 of 1

Involute Spline Data (ANSI B92 - Class 6h)	
No. of teeth	38
Modulus	1
Pressure Angle	30°
Root of tooth	Flat Root Side Fit
Truncation	-0.5
Outer diameter	φ39mm

This information contained in this document is the property of TGB Group. It is not allowable any copy or reproduction of this certified information without the prior written consent of TGB Group. TGB Group reserves the right to change its specifications without previous notice and without any communication.

**MAIN PERFORMANCE PARAMETERS**

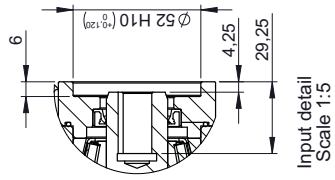
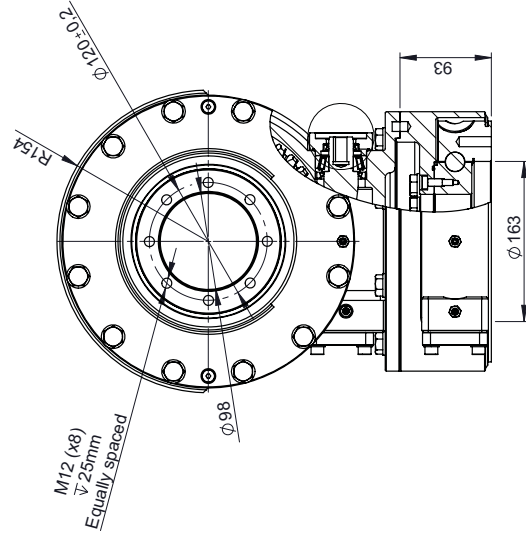
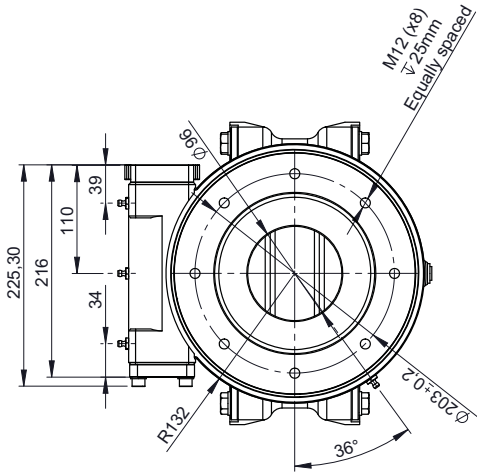
GEAR RATIO	6 : 1	HOLDING TORQUE	35KNM
EFFICIENCY	40%	TILTING MOMENT	33.9KNM
SELF-LOCKING GEAR	YES	RADIAL STATIC LOAD	135KN
BACKLASH CLEARANCE	< 0.17°	AXIAL STATIC LOAD	338KN
MAXIMUM TORQUE	8.835NM	RADIAL DYNAMIC LOAD	71KN
NOMINAL TORQUE	7.320NM	AXIAL DYNAMIC LOAD	81KN

NOTES: ALL BEW DRIVE ARE PRELUBRICATED. MAXIMUM OUTPUT SPEED 18PM.

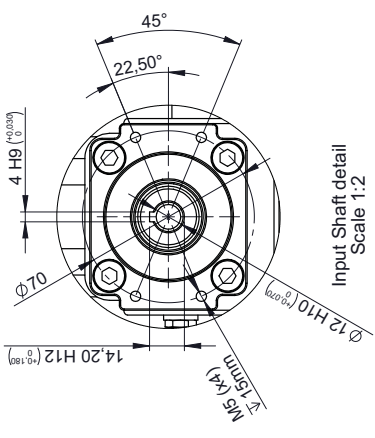
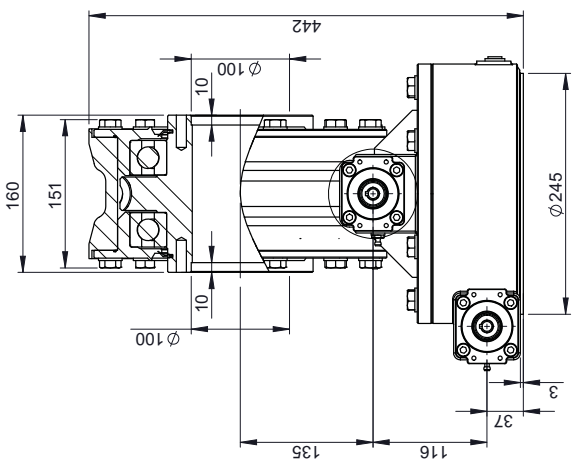
**LIMITING LOAD DIAGRAM**

Equivalent Axial Load (KN)	Tilting Moment (KNM)
65	36
130	38
195	40
260	41
325	42

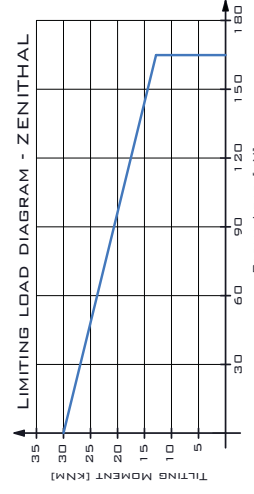
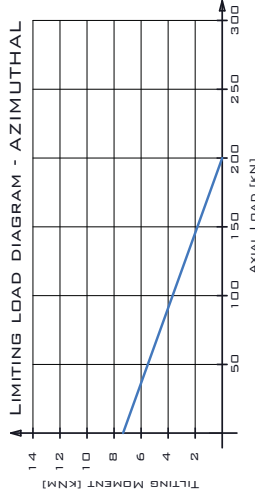
# DUAL AXIS SERIES



Input detail  
Scale 1:5



Input shaft detail  
Scale 1:2



MAIN PERFORMANCE PARAMETERS	
GEAR RATIO	46:1
EFFICIENCY	40%
SELF-LOCKING GEAR	YES
BACKLASH CLEARANCE	< 0.20°
MAXIMUM TORQUE	5.600NM
NOMINAL TORQUE	2.800NM
HOLDING TORQUE	13.5KNM
AZ TILTING MOMENT	7.5KNM
AZ RADIAL STATIC LOAD	75KN
AZ AXIAL STATIC LOAD	200KN
Z TILTING MOMENT	30KNM
Z RADIAL STATIC LOAD	165KN
Z AXIAL STATIC LOAD	330KN

NOTES: ALL BLEW DRIVE ARE PRE-LUBRICATED.  
MAXIMUM OUTPUT SPEED: 10RPM.

SHAFT: Ø 112MM KEYS SHAFT

The information contained in this document is property of TGBgroup. It is not allowable any copy or reproduction of this certified information without the prior written consent of TGBgroup. TGBgroup reserves the right to change or manufacture without previous notice and without liability of communication.

TGB GROUP  
www.TGBgroup.es

Reference: **DAD5-Z0-RM**

Denomination: **Sales Drawing**

WEIGHT [kg]: 90.09

NUM. PIECES: 1

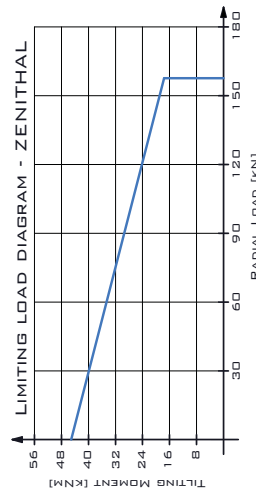
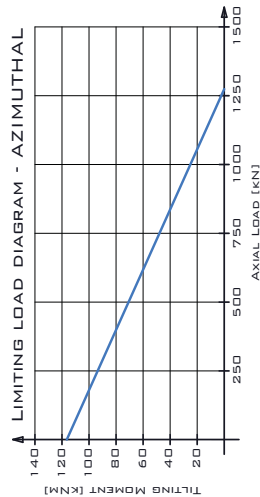
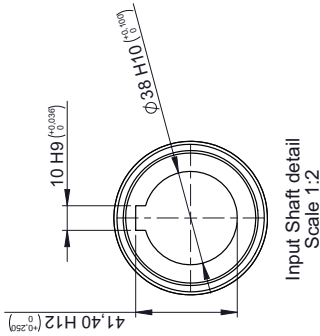
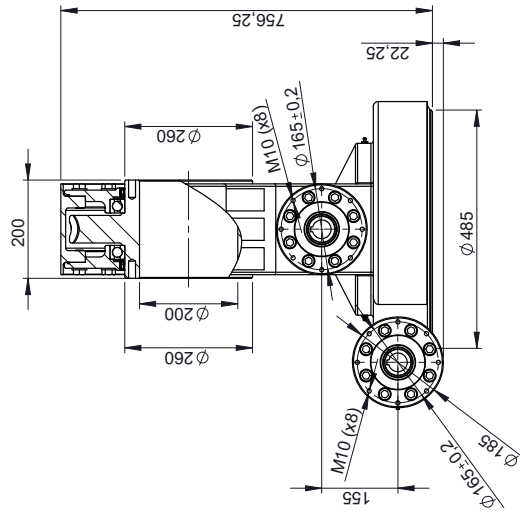
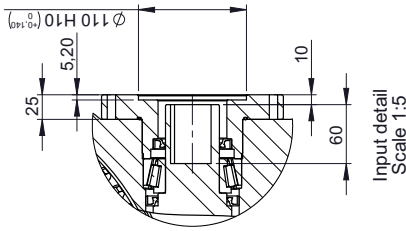
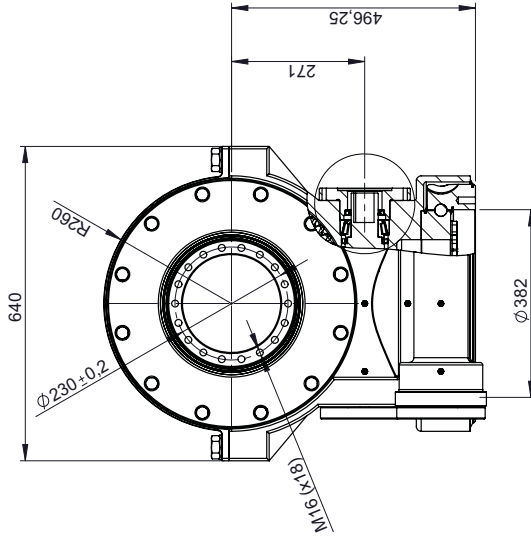
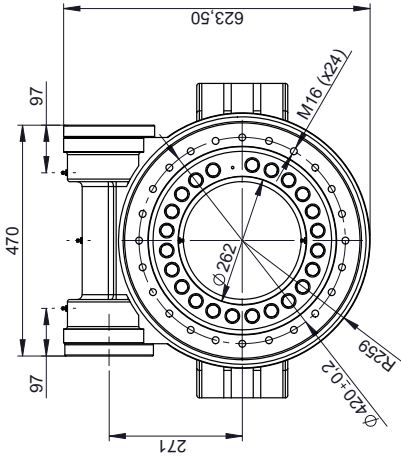
SCALE: -

SIZE: -

SHEET: 1 of 1

Rev	Denomination	NUM. PIECES	SHEET
A	Sales Drawing	1	1 of 1

# DUAL AXIS SERIES



MAIN PERFORMANCE PARAMETERS	
GEAR RATIO	6.6:1
EFFICIENCY	40%
SELF-LOCKING GEAR	YES
BACKLASH CLEARANCE	<0.20°
MAXIMUM TORQUE	36,500NM
NOMINAL TORQUE	19,400NM
HOLDING TORQUE	55KNM
AZ TILTING MOMENT	112KNM
AZ RADIAL STATIC LOAD	628KN
AZ AXIAL STATIC LOAD	1383KN
Z TILTING MOMENT	45KNM
Z RADIAL STATIC LOAD	160KN
Z AXIAL STATIC LOAD	125KN

NOTES: ALL BLEW DRIVE ARE PRELUBRICATED.  
MAXIMUM OUTPUT SPEED 1800RPM.

SHAFT: Ø38MM KEYS KEYWAY

The information contained in this document is property of TGBgroup. It is not allowable any copy or reproduction of this certified information without the written consent of TGBgroup. TGBgroup reserves the right to change of manufacture without previous notice and duty of communication.

TGB GROUP  
www.TGBgroup.es

Rev A

Denomination: Sales Drawing

WIGHT [kg]: 417.92

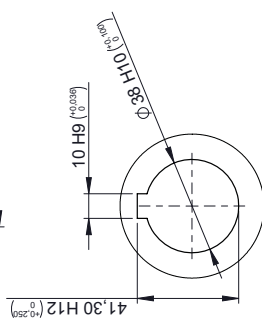
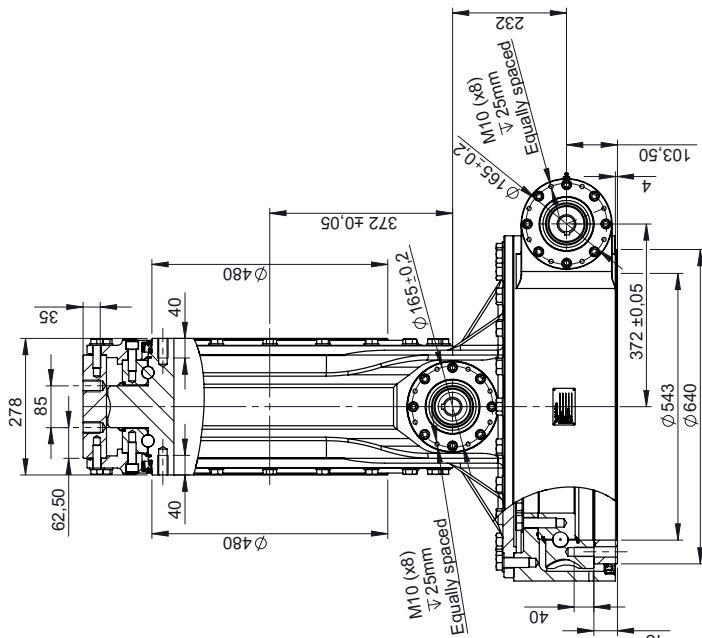
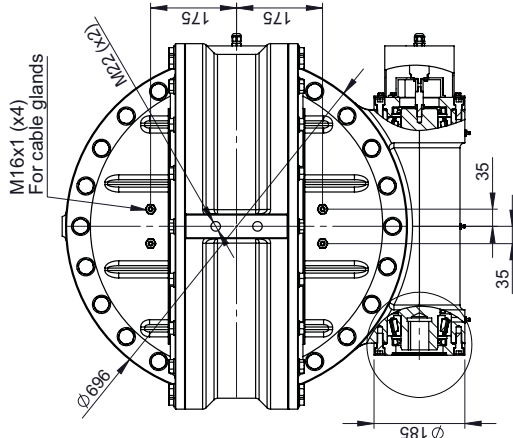
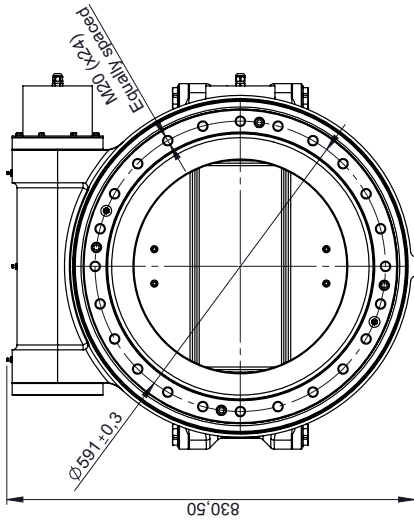
NUM. PIECES: 1

SCALE: 1 of 1

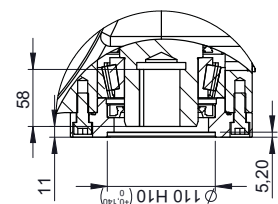
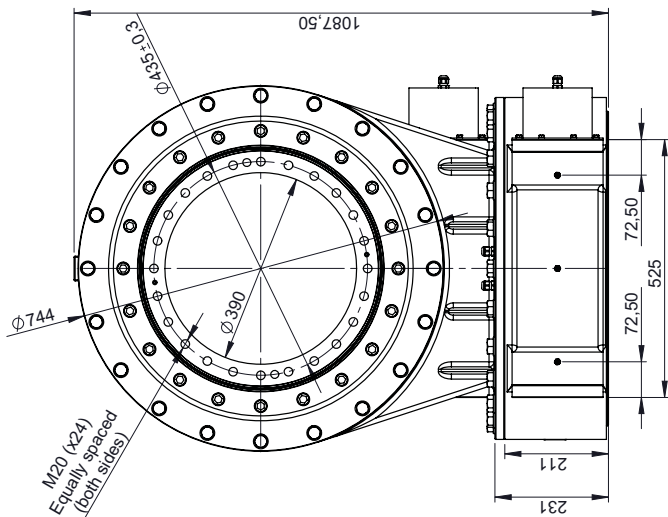
Reference	Denomination	WIGHT [kg]	NUM. PIECES
DAD7-Z0-RM	Sales Drawing	417.92	1



# DUAL AXIS SERIES



Input Shaft detail  
Scale 1:2



Input detail  
Scale 1:5

TGB GROUP  
www.TGBgroup.com

Reference: **DAD8R-Z0-RM**

Denomination: Sales Drawing

MATERIAL: - WEIGHT (kg): 800.99

SCALE: - SIZE: -

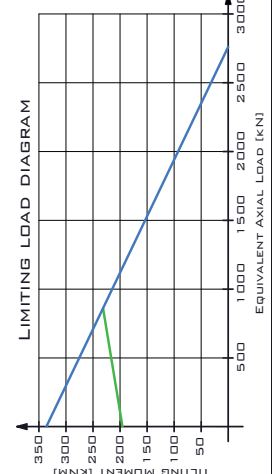
>1200 -±1.2	400.0 - 1200 -±0.8	120.0 - 400.0 -±0.5	30.0 - 120.0 -±0.3	6.0 - 30.0 -±0.2	3.0 - 6.0 -±0.1	0.3 - 3.0 -±0.1
Range of sizes. Minimum tolerance.						

Rev. A	NUM. PIECES: 1
SHEET: 1 of 1	SCALE: -

**SHAFT: Ø 38MM KEYS SHAFT**

Units: mm

The information contained in this document is the property of TGB Group. It is not allowable any copy or reproduction of this certified information without the prior written consent of TGB Group. TGB Group reserves the right to change of manufacturing without previous notice and without liability of communication.



MAIN PERFORMANCE PARAMETERS	
GEAR RATIO	80:1
HOLDING TORQUE	110KNM
EFFICIENCY	30%
TILTING MOMENT	340KNM
SELF-LOCKING GEAR	YES
RADIAL STATIC LOAD	1.242KN
BACKLASH CLEARANCE	< 0.05°
AXIAL STATIC LOAD	2.755KN
MAXIMUM TORQUE	100 KNM
RADIAL DYNAMIC LOAD	312KN
NOMINAL TORQUE	75KNM
AXIAL DYNAMIC LOAD	688KN

NOTES: ALL BLEW DRIVE ARE PRELUBRICATED - MAXIMUM OUTPUT SPEED: 120 RPM. ALL SLEWS: DACROMET-TREATED

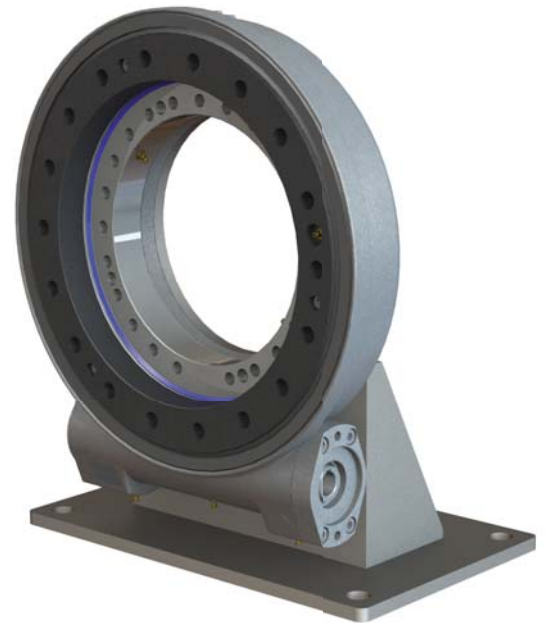
# ACCESSORIES

---

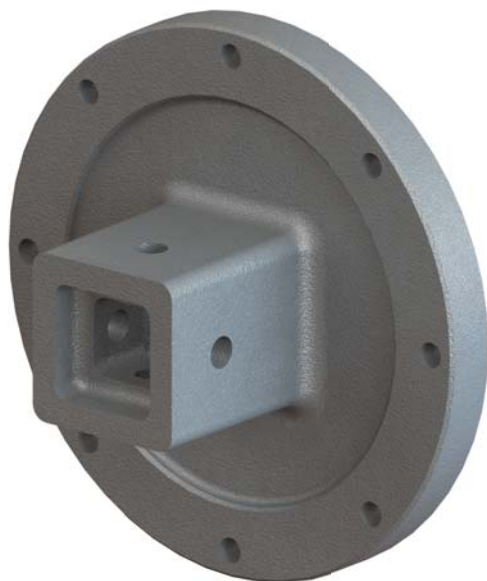
TGBgroup also provides different accessories to attach our drives to the customers structures.

Some examples of these accessories that we usually provide are shown below.

## VERTICAL SUPPORT



## SQUARE END FLANGE



*we* *move*

---

*Your movement solutions*



## **TGBGROUP**

C/ L'Alsina, Parcela 37 - Nave 3  
Polígono Industrial "LA MASIA"  
08798 Sant Cugat Sesgarrigues  
Barcelona - SPAIN

Phone: +34 938 182 450  
Email: [info@tgbgroup.es](mailto:info@tgbgroup.es)