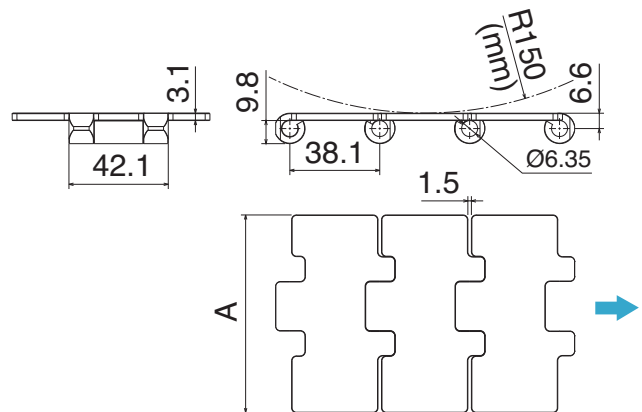


## 812/815 catena rettilinea / straight running chain / geradegängige Scharnierbandkette



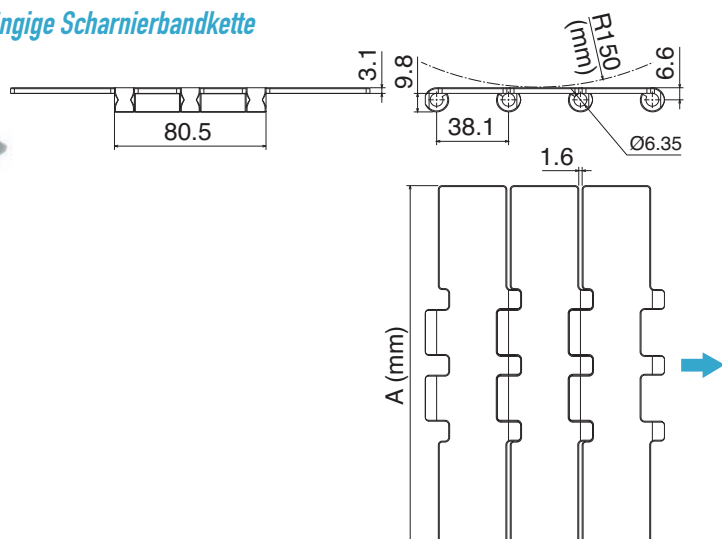
Article-Nr.	Ref.	A (Plate Width) mm	Weight kg/m	Surface finish µm	Surface Flatness mm	Polished Hinge eyes	Max working load (N)	Backflex radius min. mm	Plate Thickness mm
<b>SS Ferritic Stainless Steel (1.4016)</b>									
1001 02 02	SS 812 K325	82,5	2,55	0,5	0,15	NO	5400	150	3.1
1001 02 03	SS 812 K330	83,8	2,59	0,5	0,15	NO			
1001 02 04	SS 812 K350	88,9	2,69	0,5	0,15	NO			
1001 02 05	SS 812 K450	114,3	3,25	0,5	0,20	NO			
1001 02 06	SS 812 K600	152,4	4,15	0,5	0,30	NO			
1001 02 07	SS 812 K750	190,5	5,05	0,5	0,30	NO			
<b>SSE Specially treated Ferritic Stainless Steel (1.4589) - Hardened pins</b>									
1001 01 02	SSE 815 K325 HB	82,5	2,55	0,3	0,10	YES	6000	150	3.1
1001 01 03	SSE 815 K330 HB	83,8	2,59	0,3	0,10	YES			
1001 01 04	SSE 815 K350	88,9	2,69	0,3	0,15	NO			
1001 01 05	SSE 815 K450	114,3	3,25	0,3	0,20	NO			
1001 01 06	SSE 815 K600	152,4	4,15	0,3	0,30	NO			
1001 01 07	SSE 815 K750	190,5	5,05	0,3	0,30	NO			



Pins: Martensitic 1.4057

# 802/805-8157

## 802/805 catena rettilinea / straight running chain / geradegängige Scharnierbandkette

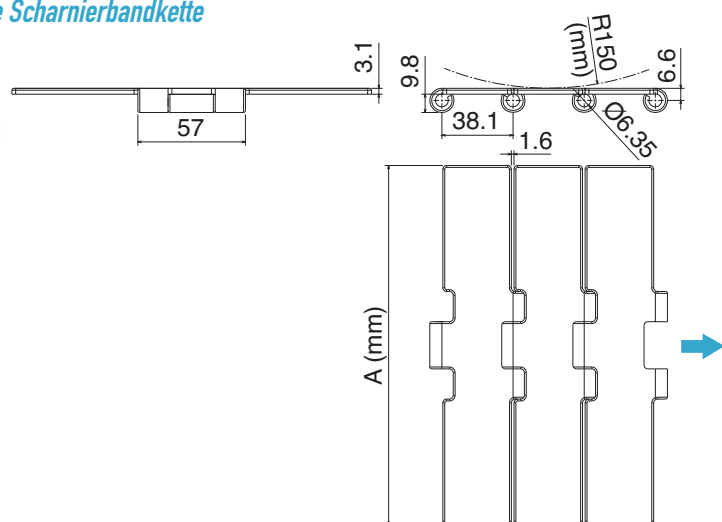
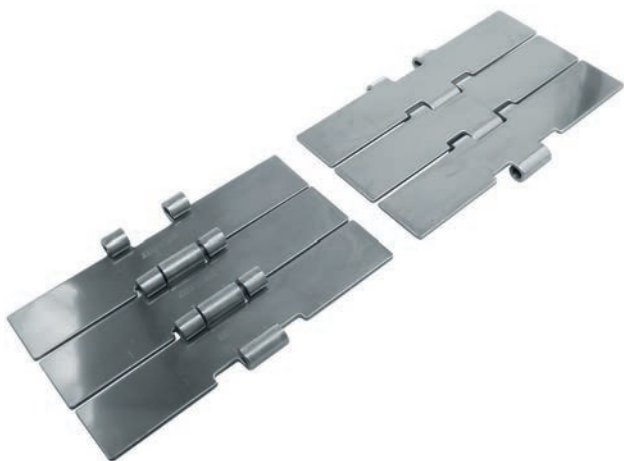


Article-Nr.	Ref.	A (Plate Width) mm	Weight kg/m	Surface finish µm	Max working load (N)	Backflex radius min. mm	Plate Thickness mm
<b>SS Ferritic Stainless Steel (1.4016)</b>							
<b>1003 02 07</b>	SS 802 K750	190,5	5,80	0,6	7000	150	3,1
<b>SSE Specially treated Ferritic Stainless Steel (1.4589)</b>							
<b>1003 01 07</b>	SSE 805 K750	190,5	5,80	0,3	9000	150	3,1



Pins: Martensitic 1.4057

## 8157 catena rettilinea / straight running chain / geradegängige Scharnierbandkette



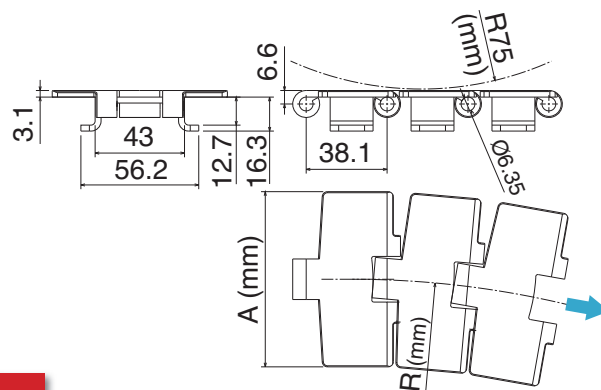
Article-Nr.	Ref.	A (Plate Width) mm	Weight kg/m	Surface finish µm	Max working load (N)	Backflex radius min. mm	Plate Thickness mm
<b>SSE Specially treated Ferritic Stainless Steel (1.4589)</b>							
<b>1005 01 07</b>	SSE 8157 K750	190,5	5,60	0,3	7000	150	3,1



Pins: Martensitic 1.4057

# 881 TAB - 881 B

## 881 TAB catena curvilinea / Sideflexing chain / kurvengängige Scharnierbandkette



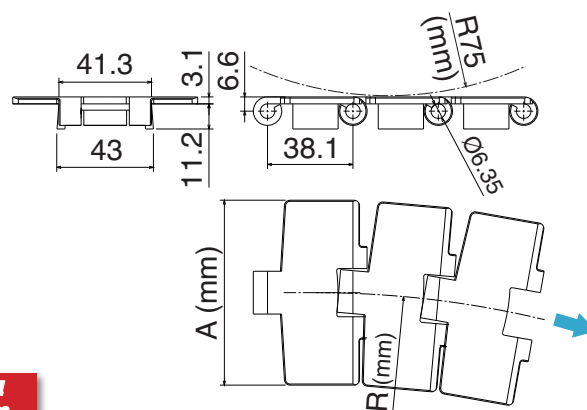
**Tab System**

Article-Nr.	Ref.	A (Plate Width) mm	R mm	Weight kg/m	Surface finish µm	Max working load (N)	Backflex radius min. mm	Plate Thickness mm
<b>SS Ferritic Stainless Steel (1.4016)</b>								
1010 02 02	SS 881 TAB K325	82,5	457	3,00	0,3	4000	75	3.1
<b>SSE Specially treated Ferritic Stainless Steel (1.4589)</b>								
1010 01 02	SSE 881 TAB K325	82,5	457	3,00	0,3	6000	75	3.1
1010 01 05	SSE 881 TAB K450	114,3	500	3,69	0,3			
1010 01 07	SSE 881 TAB K750	190,3	500	5,50	0,3			



Pins: Martensitic 1.4057

## 881 B catena curvilinea / Sideflexing chain / kurvengängige Scharnierbandkette



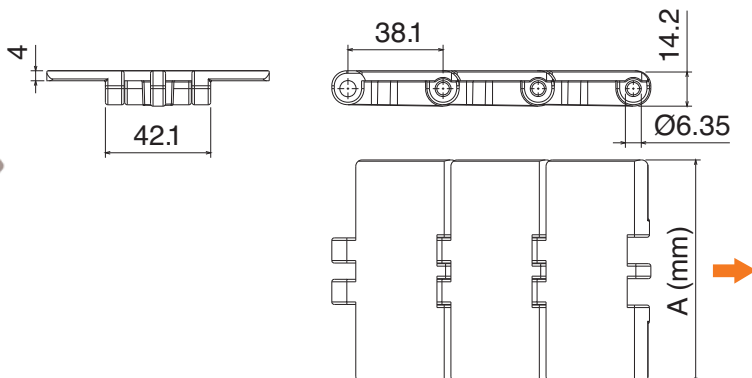
**Bevel System**

Article-Nr.	Ref.	A (Plate Width) mm	R mm	Weight kg/m	Surface finish µm	Max working load (N)	Backflex radius min. mm	Plate Thickness mm
<b>SSE Specially treated Ferritic Stainless Steel (1.4589)</b>								
1012 01 02	SSE 881 K325	82,5	457	2,95	0,3	6000	75	3.1
1012 01 05	SSE 881 K450	114,3	500	3,65	0,3			
1012 01 07	SSE 881 K750	190,3	500	5,45	0,3			

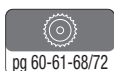


Pins: Martensitic 1.4057

## 820 catena rettilinea / straight running chain / geradegängige Scharnierbandkette

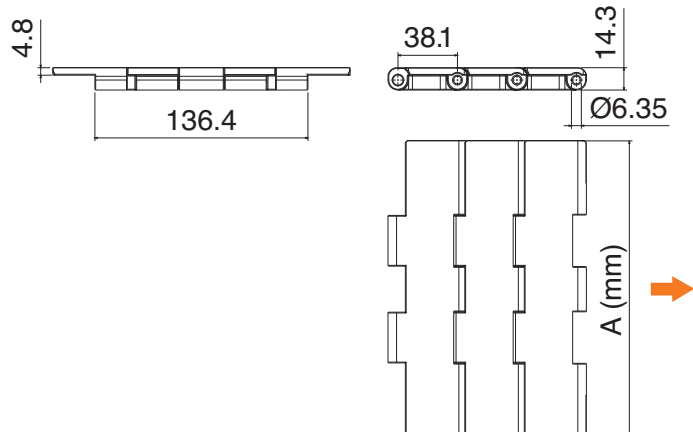


Material	Article-Nr.	Ref.	A (Plate Width) mm	Weight kg/m	Max working load (N)	Backflex radius min. mm
LF	1101 01 02	LF 820 K325	82,5	0,89	1260	50
	1101 01 03	LF 820 K330	83,8	0,90		
	1101 01 04	LF 820 K350	88,9	0,91		
	1101 01 14	LF 820 K400	101,6	0,95		
	1101 01 05	LF 820 K450	114,3	1,00		
	1101 01 06	LF 820 K600	152,4	1,22		
	1101 01 07	LF 820 K750	190,5	1,43		
MX	1101 03 02	MX 820 K325	82,5	0,89	1000	50
	1101 03 03	MX 820 K330	83,8	0,90		
	1101 03 04	MX 820 K350	88,9	0,91		
	1101 03 14	MX 820 K400	101,6	0,95		
	1101 03 05	MX 820 K450	114,3	1,00		
	1101 03 06	MX 820 K600	152,4	1,22		
	1101 03 07	MX 820 K750	190,5	1,43		
MK	1101 08 02	MK 820 K325	82,5	0,89	1200	50
	1101 08 03	MK 820 K330	83,8	0,90		
	1101 08 04	MK 820 K350	88,9	0,91		
	1101 08 14	MK 820 K400	101,6	0,95		
	1101 08 05	MK 820 K450	114,3	1,00		
	1101 08 06	MK 820 K600	152,4	1,22		
	1101 08 07	MK 820 K750	190,5	1,43		



Pins: Stainless Steel

## 821 catena rettilinea / straight running chain / geradegängige Scharnierbandkette

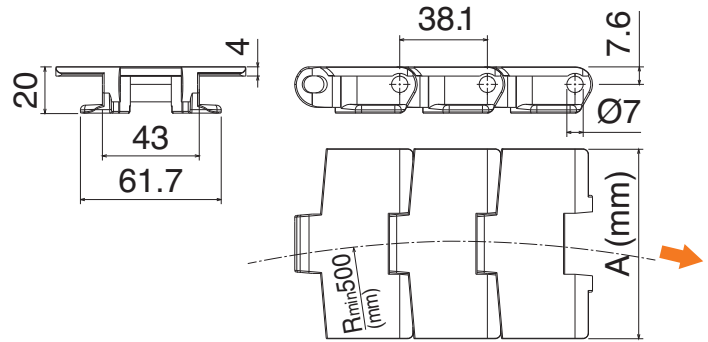
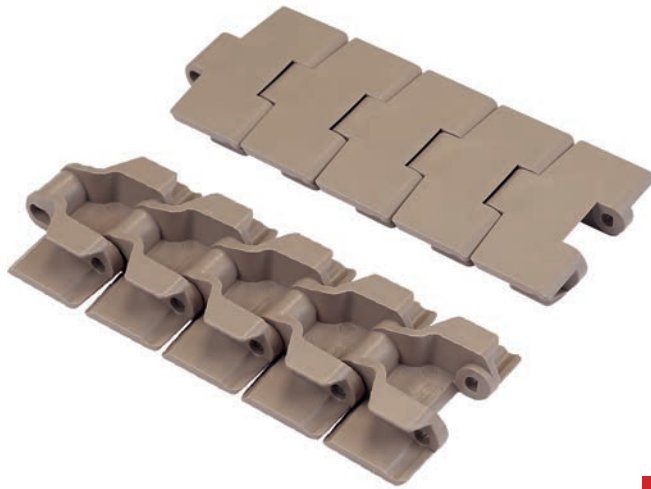


Material	Article-Nr.	Ref.	A (Plate Width) mm	Weight kg/m	Max working load (N)	Backflex radius min. mm
LF	1104 01 07	LF 821 K750	190,5	2,55	2770	50
	1104 01 08	LF 821 K1000	254,0	3,05		
	1104 01 09	LF 821 K1200	304,8	3,35		
MX	1104 03 07	MX 821 K750	190,5	2,55	2200	
	1104 03 08	MX 821 K1000	254,0	3,05		
	1104 03 09	MX 821 K1200	304,8	3,35		
MK	1104 08 07	MK 821 K750	190,5	2,55	2650	
	1104 08 08	MK 821 K1000	254,0	3,05		
	1104 08 09	MK 821 K1200	304,8	3,35		
MP	1104 13 07	MP 821 K750	190,5	2,55	2770	
	1104 13 08	MP 821 K1000	254,0	3,05		
	1104 13 09	MP 821 K1200	304,8	3,35		
DKM	1104 16 07	DKM 821 K750	190,5	2,55	2770	
	1104 16 08	DKM 821 K1000	254,0	3,05		
	1104 16 09	DKM 821 K1200	304,8	3,35		
MWX	1104 17 07	MWX 821 K750	190,5	2,55	2770	
	1104 17 08	MWX 821 K1000	254,0	3,05		
	1104 17 09	MWX 821 K1200	304,8	3,35		



Pins: Stainless Steel

## 880 TAB catena curvilinea / Sideflexing chain / kurvengängige Scharnierbandkette



### Tab System

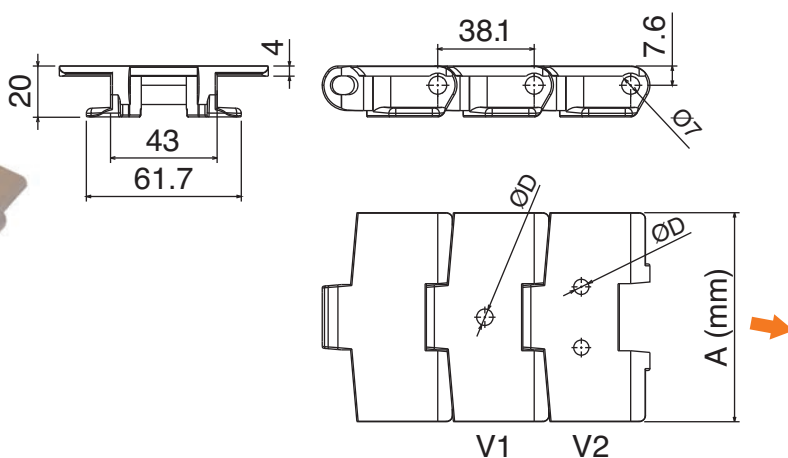
Material	Article-Nr.	Ref.	A (Plate Width) mm	Weight kg/m	Max working load (N)	Backflex radius min. mm
LF	1111 01 02	LF 880 TAB K325	82,5	1,015	2200	40
	1111 01 03	LF 880 TAB K330	83,8	1,018		
	1111 01 05	LF 880 TAB K450	114,3	1,09		
MX	1111 03 02	MX 880 TAB K325	82,5	1,015	1750	
	1111 03 03	MX 880 TAB K330	83,8	1,018		
	1111 03 05	MX 880 TAB K450	114,3	1,09		
MK	1111 08 02	MK 880 TAB K325	82,5	1,015	2100	
	1111 08 03	MK 880 TAB K330	83,8	1,018		
	1111 08 05	MK 880 TAB K450	114,3	1,09		
MP	1111 13 02	MP 880 TAB K325	82,5	1,015	2200	
	1111 13 03	MP 880 TAB K330	83,8	1,018		
	1111 13 05	MP 880 TAB K450	114,3	1,09		
DKM	1111 16 02	DKM 880 TAB K325	82,5	1,015	2200	
	1111 16 03	DKM 880 TAB K330	83,8	1,018		
	1111 16 05	DKM 880 TAB K450	114,3	1,09		
MWX	1111 17 02	MWX 880 TAB K325	82,5	1,015	2200	
	1111 17 03	MWX 880 TAB K330	83,8	1,018		
	1111 17 05	MWX 880 TAB K450	114,3	1,09		



Pins: Stainless Steel

# 880 TAB

**880 TAB** catena curvilinea / Sideflexing chain / kurvengängige Scharnierbandkette



**Tab System**

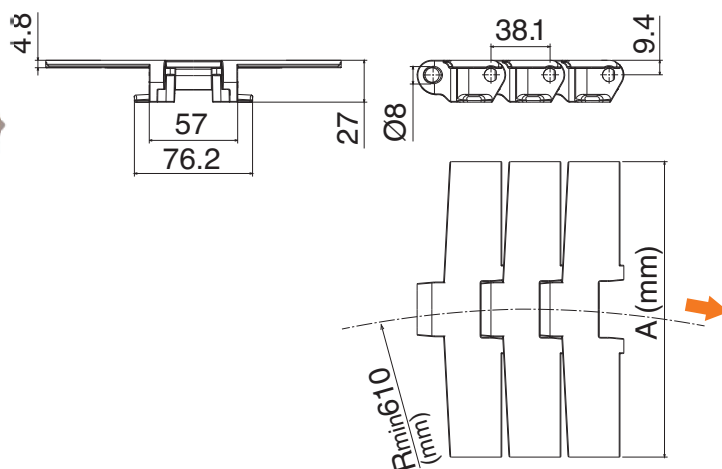
Material	Article-Nr.	Ref.	A (Plate Width) mm	Weight kg/m	D mm	Max working load (N)	Backflex radius min. mm
LF	<b>1156 01 02</b>	LF 880 V1 K325	82,5	1,015	6,5	2200	40
	<b>1157 01 02</b>	LF 880 V2 K325	82,5	1,015			
	<b>1157 01 05</b>	LF 880 V2 K450	114,3	1,09			



Pins: Stainless Steel

# 882 TAB

**882 TAB** catena curvilinea / Sideflexing chain / kurvengängige Scharnierbandkette



**Tab System**

Material	Article-Nr.	Ref.	A (Plate Width) mm	Weight kg/m	Max working load (N)	Backflex radius min. mm
LF	1114 01 05	LF 882 TAB K450	114,3	2,05	3830	40
	1114 01 06	LF 882 TAB K600	152,4	2,20		
	1114 01 07	LF 882 TAB K750	190,5	2,45		
	1114 01 08	LF 882 TAB K1000	254,0	2,85		
	1114 01 09	LF 882 TAB K1200	304,8	3,40		
MX	1114 03 05	MX 882 TAB K450	114,3	2,05	3050	
	1114 03 06	MX 882 TAB K600	152,4	2,20		
	1114 03 07	MX 882 TAB K750	190,5	2,45		
	1114 03 08	MX 882 TAB K1000	254,0	2,85		
	1114 03 09	MX 882 TAB K1200	304,8	3,40		
MK	1114 08 05	MK 882 TAB K450	114,3	2,05	3670	
	1114 08 06	MK 882 TAB K600	152,4	2,20		
	1114 08 07	MK 882 TAB K750	190,5	2,45		
	1114 08 08	MK 882 TAB K1000	254,0	2,85		
	1114 08 09	MK 882 TAB K1200	304,8	3,40		
MP	1114 13 05	MP 882 TAB K450	114,3	2,05	3830	
	1114 13 06	MP 882 TAB K600	152,4	2,20		
	1114 13 07	MP 882 TAB K750	190,5	2,45		
	1114 13 08	MP 882 TAB K1000	254,0	2,85		
	1114 13 09	MP 882 TAB K1200	304,8	3,40		
DKM	1114 16 05	DKM 882 TAB K450	114,3	2,05	3830	
	1114 16 06	DKM 882 TAB K600	152,4	2,20		
	1114 16 07	DKM 882 TAB K750	190,5	2,45		
	1114 16 08	DKM 882 TAB K1000	254,0	2,85		
	1114 16 09	DKM 882 TAB K1200	304,8	3,40		
MWX	1114 17 05	MWX 882 TAB K450	114,3	2,05	3830	
	1114 17 06	MWX 882 TAB K600	152,4	2,20		
	1114 17 07	MWX 882 TAB K750	190,5	2,45		
	1114 17 08	MWX 882 TAB K1000	254,0	2,85		
	1114 17 09	MWX 882 TAB K1200	304,8	3,40		



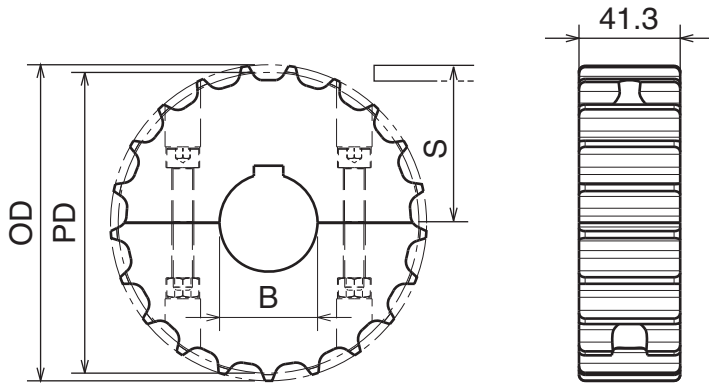
Pins: Stainless Steel



**Used also for series**  
**881M**



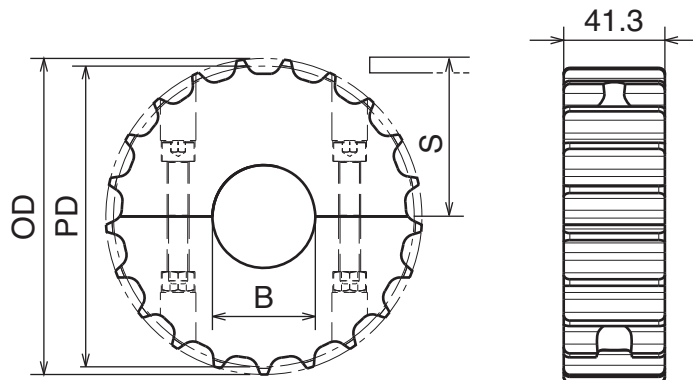
**Ruota traino divisa, fresata / Split drive sprocket, machined / geteiltes Antriebskettenrad, gefräst**



Part	Article-Nr.	Z-	Bore	PD	OD	S
501	50101	17	25	105,5	103,9	55,9
501	50102		30			
501	50103		35			
501	50104		40			
502	50201	19	25	117,3	117,0	61,9
502	50202		30			
502	50203		35			
502	50204		40			
503	50301	21	25	129,3	129,0	67,8
503	50302		30			
503	50303		35			
503	50304		40			
504	50401	23	25	141,2	142,0	73,8
504	50402		30			
504	50403		35			
504	50404		40			
505	50501	25	25	153,2	154,0	79,8
505	50502		30			
505	50503		35			
505	50504		40			
506	50601	27	25	165,2	166,8	85,8
506	50602		30			
506	50603		35			
506	50604		40			
507	50701	29	25	177,2	178,5	91,8
507	50702		30			
507	50703		35			
507	50704		40			



**Ruota rinvio divisa, fresata / Split idler sprocket, machined / geteiltes Umlenkrad, gefräst**



Part	Article-Nr.	Z-	Bore	PD	OD	S
501	50150	17	18*	105,5	103,9	55,9
501	50151		25			
501	50152		30			
501	50153		35			
501	50154		40			
502	50250	19	18*	117,3	117,0	61,9
502	50251		25			
502	50252		30			
502	50253		35			
502	50254		40			
503	50350	21	18*	129,3	129,0	67,8
503	50351		25			
503	50352		30			
503	50353		35			
503	50354		40			
504	50450	23	18*	141,2	142,0	73,8
504	50451		25			
504	50452		30			
504	50453		35			
504	50454		40			
505	50550	25	18*	153,2	154,0	79,8
505	50551		25			
505	50552		30			
505	50553		35			
505	50554		40			
506	50650	27	18*	165,2	166,8	85,8
506	50651		25			
506	50652		30			
506	50653		35			
506	50654		40			
507	50750	29	18*	177,2	178,5	91,8
507	50751		25			
507	50752		30			
507	50753		35			
507	50754		40			

\*Plain Bore

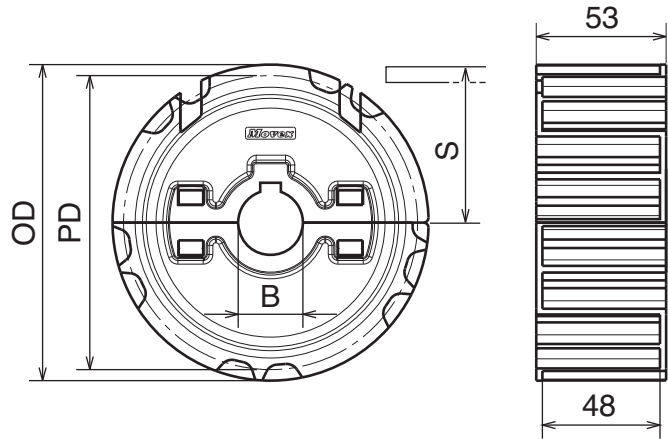
Materiale:	Material:	Materialien:
Poliamide rinforzato	Polyamide reinforced	Verstärktes Polyamid
Viti: Acciaio inox	Screws: Stainless steel	Schrauben: Edelstahl
Dadi: ottone nichelato	Nuts: nickel plated brass	Mutter: Messing vernickelt

Used also for series  
881M

### Ruota traino divisa, stampata / Split drive sprocket, molded / geteiltes Antriebskettenrad, gespritzt



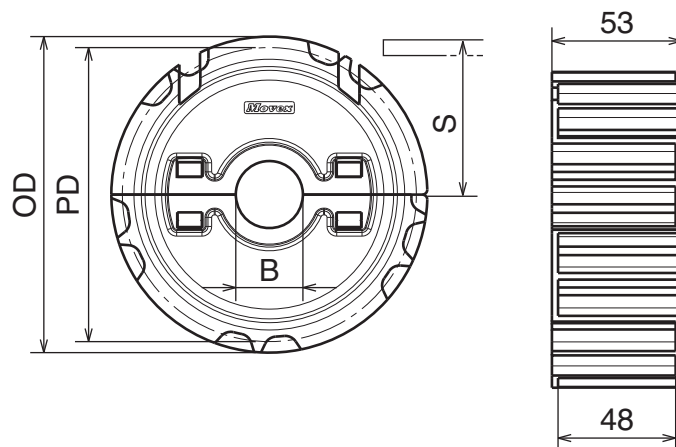
Part	Article-Nr.	Z-	Bore	PD	OD	S
508	50801	21	25	129,3	129,0	67,8
508	50802		30			
508	50803		35			
508	50804		40			
509	50901	23	25	141,2	142,0	73,8
509	50902		30			
509	50903		35			
509	50904		40			
510	51001	25	25	153,2	154,0	79,8
510	51002		30			
510	51003		35			
510	51004		40			



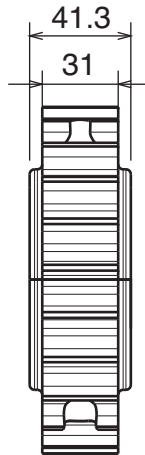
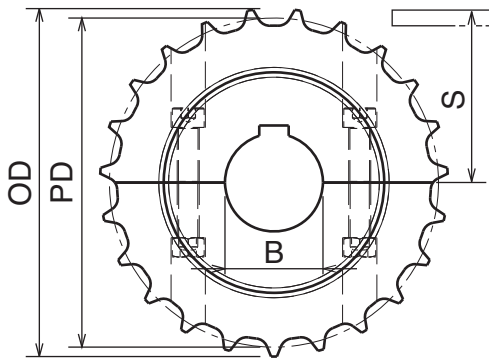
### Ruota rinvio divisa, stampata / Split idler sprocket, molded / geteiltes Umlenkrad, gespritzt



Part	Article-Nr.	Z-	Bore	PD	OD	S
508	50851	21	25	129,3	129,0	67,8
508	50852		30			
508	50853		35			
508	50854		40			
509	50951	23	25	141,2	142,0	73,8
509	50952		30			
509	50953		35			
509	50954		40			
510	51051	25	25	153,2	154,0	79,8
510	51052		30			
510	51053		35			
510	51054		40			

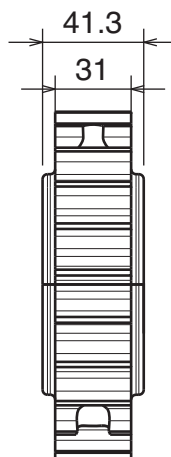
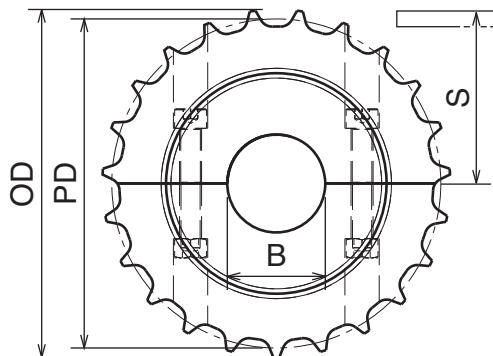


**Used for series**  
**881B and 881TAB**



**Ruota traino divisa, fresata / Split drive sprocket, machined / geteiltes Antriebskettenrad, gefräst**

Part	Article-Nr.	Z-	Bore	PD	OD	S
511	51101	17	25	105,5	103,9	55,9
511	51102		30			
511	51103		35			
511	51104		40			
512	51201	19	25	117,3	117,0	61,9
512	51202		30			
512	51203		35			
512	51204		40			
513	51301	21	25	129,3	129,0	67,8
513	51302		30			
513	51303		35			
513	51304		40			
514	51401	23	25	141,2	142,0	73,8
514	51402		30			
514	51403		35			
514	51404		40			
515	51501	25	25	153,2	154,0	79,8
515	51502		30			
515	51503		35			
515	51504		40			
516	51601	27	25	165,2	166,8	85,8
516	51602		30			
516	51603		35			
516	51604		40			
517	51701	29	25	177,2	178,5	91,8
517	51702		30			
517	51703		35			
517	51704		40			



**Ruota rinvio divisa, fresata / Split idler sprocket, machined / geteiltes Umlenkrad, gefräst**

Part	Article-Nr.	Z-	Bore	PD	OD	S
511	51150	17	18*	105,5	103,9	55,9
511	51151		25			
511	51152		30			
511	51153		35			
511	51154		40			
512	51250	19	18*	117,3	117,0	61,9
512	51251		25			
512	51252		30			
512	51253		35			
512	51254		40			
513	51350	21	18*	129,3	129,0	67,8
513	51351		25			
513	51352		30			
513	51353		35			
513	51354		40			
514	51450	23	18*	141,2	142,0	73,8
514	51451		25			
514	51452		30			
514	51453		35			
514	51454		40			
515	51550	25	18*	153,2	154,0	79,8
515	51551		25			
515	51552		30			
515	51553		35			
515	51554		40			
516	51650	27	18*	165,2	166,8	85,8
516	51651		25			
516	51652		30			
516	51653		35			
516	51654		40			
517	51750	29	18*	177,2	178,5	91,8
517	51751		25			
517	51752		30			
517	51753		35			
517	51754		40			

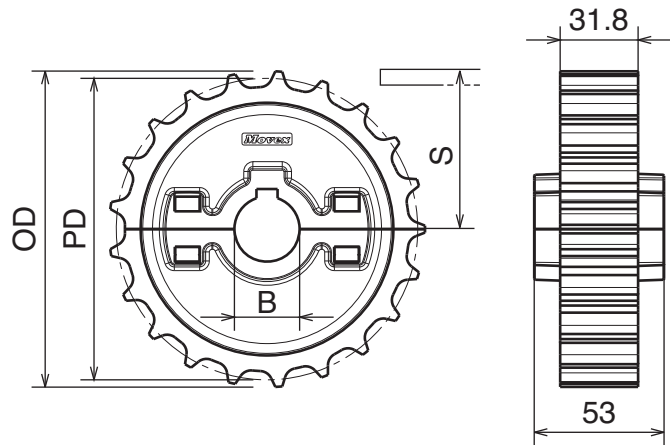
\*Plain Bore

Materiale:	Material:	Materialien:
Poliammide rinforzato	Polyamide reinforced	Verstärktes Polyamid
Viti: Acciaio inox	Screws: Stainless steel	Schrauben: Edelstahl
Dadi: ottone nichelato	Nuts: nickel plated brass	Mutter: Messing vernickelt

Used for series  
881B and 881TAB

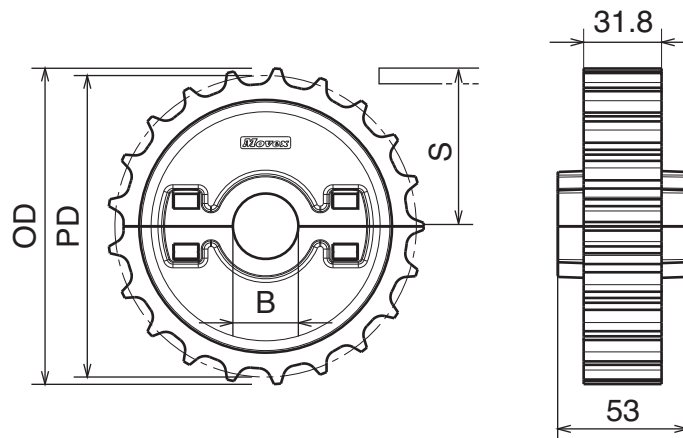
**Ruota traino divisa, stampata / Split drive sprocket, molded / geteiltes Antriebskettenrad, gespritzt**

Part	Article-Nr.	Z-	Bore	PD	OD	S
518	51801	21	25	129,3	129,0	67,8
518	51802		30			
518	51803		35			
518	51804		40			
519	51901	23	25	141,2	142,0	73,8
519	51902		30			
519	51903		35			
519	51904		40			
520	52001	25	25	153,2	154,0	79,8
520	52002		30			
520	52003		35			
520	52004		40			



**Ruota rinvio divisa, stampata / Split idler sprocket, molded / geteiltes Umlenkrad, gespritzt**

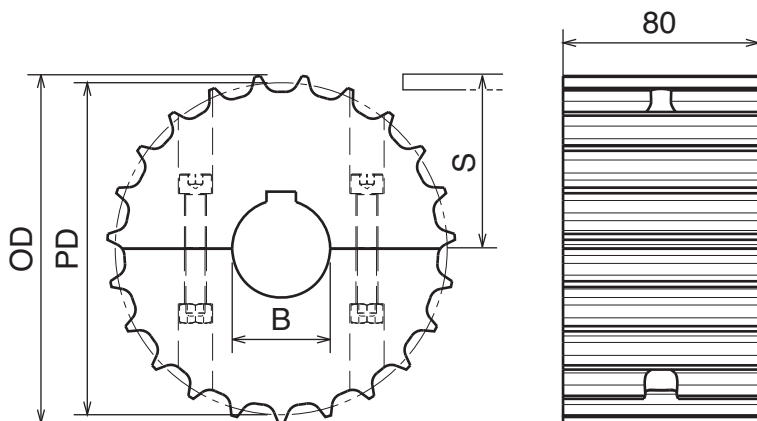
Part	Article-Nr.	Z-	Bore	PD	OD	S
518	51851	21	25	129,3	129,0	67,8
518	51852		30			
518	51853		35			
518	51854		40			
519	51951	23	25	141,2	142,0	73,8
519	51952		30			
519	51953		35			
519	51954		40			
520	52051	25	25	153,2	154,0	79,8
520	52052		30			
520	52053		35			
520	52054		40			



Materiale:	Material:	Materialien:
Poliammide	Polyamide	Polyamid
Viti: Acciaio inox	Screws: Stainless steel	Schrauben: Edelstahl
Dadi: ferro zincato	Nuts: zinc plated steel	Mutter: verzinkter Stahl



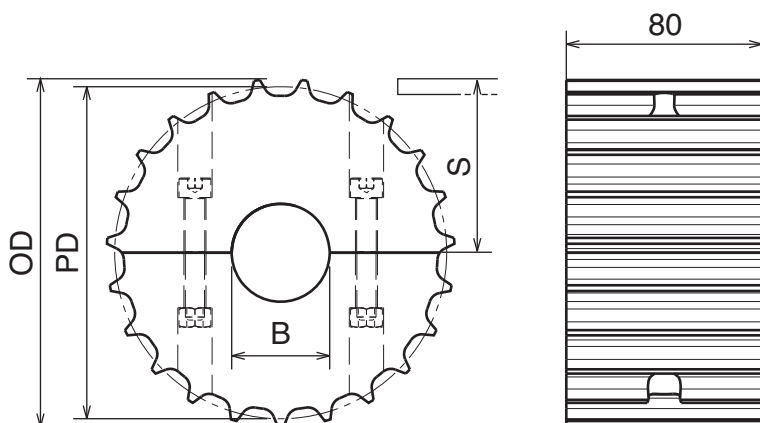
Ruota traino divisa, fresata / Split drive sprocket, machined / geteiltes Antriebskettenrad, gefräst



Part	Article-Nr.	Z-	Bore	PD	OD	S
521	52101	17	25	105,5	103,9	55,9
521	52102		30			
521	52103		35			
521	52104		40			
522	52201	19	25	117,3	117,0	61,9
522	52202		30			
522	52203		35			
522	52204		40			
523	52301	21	25	129,3	129,0	67,8
523	52302		30			
523	52303		35			
523	52304		40			
524	52401	23	25	141,2	142,0	73,8
524	52402		30			
524	52403		35			
524	52404		40			
525	52501	25	25	153,2	154,0	79,8
525	52502		30			
525	52503		35			
525	52504		40			
526	52601	27	25	165,2	166,8	85,8
526	52602		30			
526	52603		35			
526	52604		40			
527	52701	29	25	177,2	178,5	91,8
527	52702		30			
527	52703		35			
527	52704		40			



Ruota rinvio divisa, fresata / Split idler sprocket, machined / geteiltes Umlenkrad, gefräst



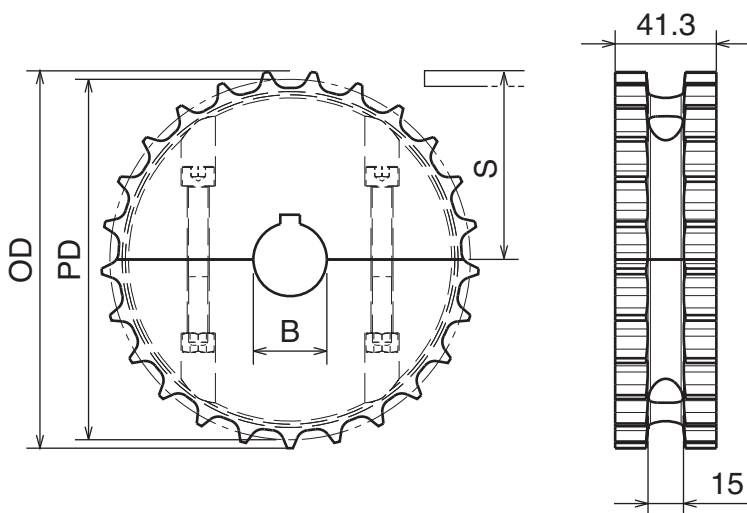
Part	Article-Nr.	Z-	Bore	PD	OD	S
521	52150	17	18*	105,5	103,9	55,9
521	52151		25			
521	52152		30			
521	52153		35			
521	52154		40			
522	52250	19	18*	117,3	117,0	61,9
522	52251		25			
522	52252		30			
522	52253		35			
522	52254		40			
523	52350	21	18*	129,3	129,0	67,8
523	52351		25			
523	52352		30			
523	52353		35			
523	52354		40			
524	52450	23	18*	141,2	142,0	73,8
524	52451		25			
524	52452		30			
524	52453		35			
524	52454		40			
525	52550	25	18*	153,2	154,0	79,8
525	52551		25			
525	52552		30			
525	52553		35			
525	52554		40			
526	52650	27	18*	165,2	166,8	85,8
526	52651		25			
526	52652		30			
526	52653		35			
526	52654		40			
527	52750	29	18*	177,2	178,5	91,8
527	52751		25			
527	52752		30			
527	52753		35			
527	52754		40			

\*Plain Bore

Materiale:	Material:	Materialien:
Poliammide	Polyamide	Polyamid
Viti: Acciaio inox	Screws: Stainless steel	Schrauben: Edelstahl
Dadi: ferro zincato	Nuts: zinc plated steel	Mutter: verzinkter Stahl



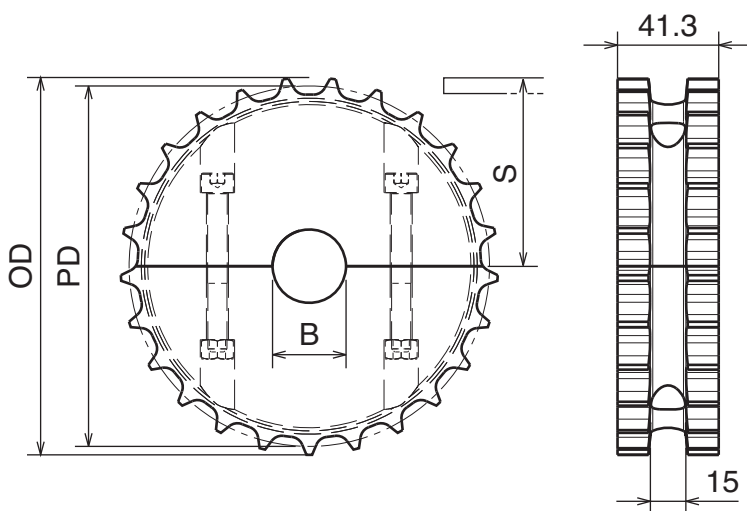
Ruota traino divisa, fresata / Split drive sprocket, machined / geteiltes Antriebskettenrad, gefräst



Part	Article-Nr.	Z-	Bore	PD	OD	S
535	53501	17	25	105,5	103,9	55,9
535	53502		30			
535	53503		35			
535	53504		40			
536	53601	19	25	117,3	117,0	61,9
536	53602		30			
536	53603		35			
536	53604		40			
537	53701	21	25	129,3	129,0	67,8
537	53702		30			
537	53703		35			
537	53704		40			
538	53801	23	25	141,2	142,0	73,8
538	53802		30			
538	53803		35			
538	53804		40			
539	53901	25	25	153,2	154,0	79,8
539	53902		30			
539	53903		35			
539	53904		40			
540	54001	27	25	165,2	166,8	85,8
540	54002		30			
540	54003		35			
540	54004		40			
541	54101	29	25	177,2	178,5	91,8
541	54102		30			
541	54103		35			
541	54104		40			



Ruota rinvio divisa, fresata / Split idler sprocket, machined / geteiltes Umlenkrad, gefräst



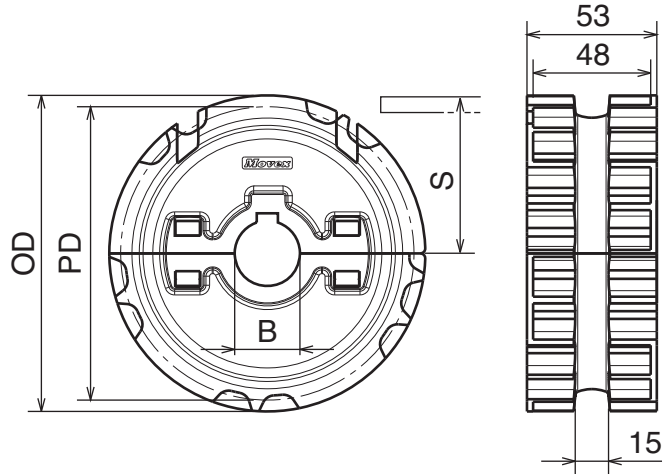
Part	Article-Nr.	Z-	Bore	PD	OD	S
535	53550	17	18*	105,5	103,9	55,9
535	53551		25			
535	53552		30			
535	53553		35			
535	53554		40			
536	53650	19	18*	117,3	117,0	61,9
536	53651		25			
536	53652		30			
536	53653		35			
536	53654		40			
537	53750	21	18*	129,3	129,0	67,8
537	53751		25			
537	53752		30			
537	53753		35			
537	53754		40			
538	53850	23	18*	141,2	142,0	73,8
538	53851		25			
538	53852		30			
538	53853		35			
538	53854		40			
539	53950	25	18*	153,2	154,0	79,8
539	53951		25			
539	53952		30			
539	53953		35			
539	53954		40			
540	54050	27	18*	165,2	166,8	85,8
540	54051		25			
540	54052		30			
540	54053		35			
540	54054		40			
541	54150	29	18*	177,2	178,5	91,8
541	54151		25			
541	54152		30			
541	54153		35			
541	54154		40			

\*Plain Bore

Materiale:	Material:	Materialien:
Poliamide rinforzato	Polyamide reinforced	Verstärktes Polyamid
Viti: Acciaio inox	Screws: Stainless steel	Schrauben: Edelstahl
Dadi: ottone nichelato	Nuts: nickel plated brass	Mutter: Messing vernickelt

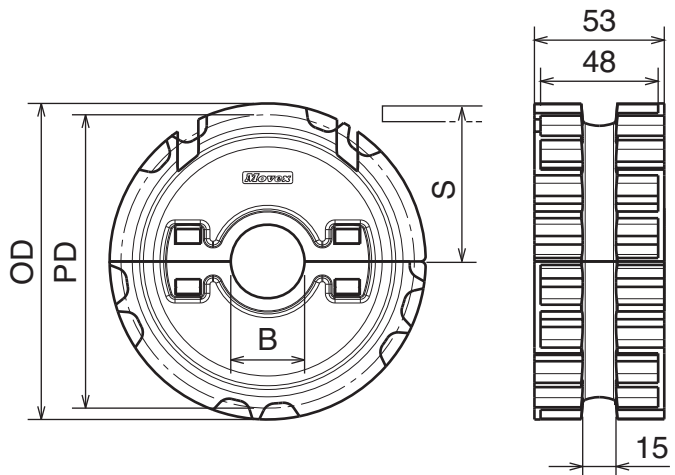
### Ruota traino divisa, stampata / Split drive sprocket, molded / geteiltes Antriebskettenrad, gespritzt

Part	Article-Nr.	Z-	Bore	PD	OD	S
542	54201	21	25	129,3	129,0	67,8
542	54202		30			
542	54203		35			
542	54204		40			
543	54301	23	25	141,2	142,0	73,8
543	54302		30			
543	54303		35			
543	54304		40			
544	54401	25	25	153,2	154,0	79,8
544	54402		30			
544	54403		35			
544	54404		40			

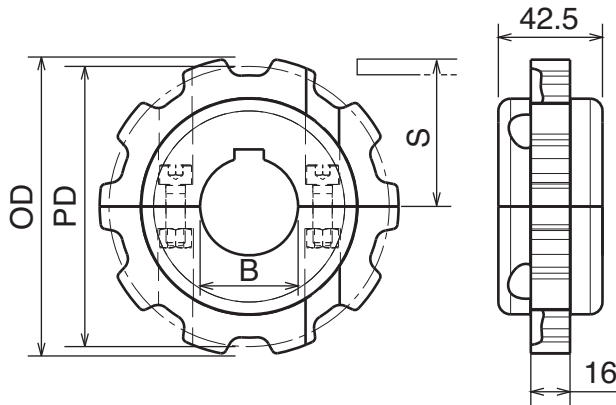


### Ruota rinvio divisa, stampata / Split idler sprocket, molded / geteiltes Umlenkrad, gespritzt

Part	Article-Nr.	Z-	Bore	PD	OD	S
542	54251	21	25	129,3	129,0	67,8
542	54252		30			
542	54253		35			
542	54254		40			
543	54351	23	25	141,2	142,0	73,8
543	54352		30			
543	54353		35			
543	54354		40			
544	54451	25	25	153,2	154,0	79,8
544	54452		30			
544	54453		35			
544	54454		40			



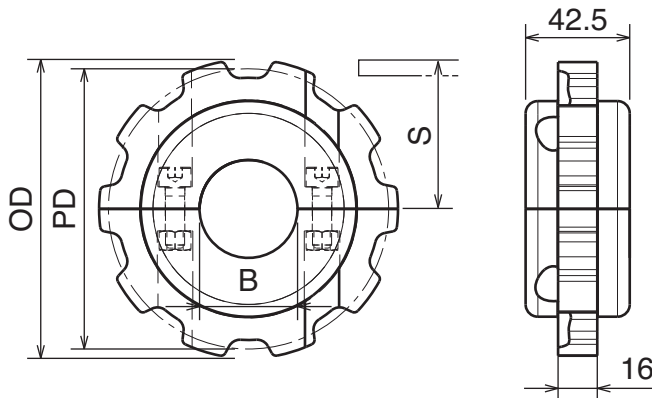
**Also suitable for series**  
**828 - 878 - 879M - 879TAB**



**Ruota traino divisa, fresata / Split drive sprocket, machined / geteiltes Antriebskettenrad, gefräst**

Materiale:	Material:	Materialien:
Poliammide	Polyamide	Polyamid
Viti: Acciaio inox	Screws: Stainless steel	Schrauben: Edelstahl
Dadi: ferro zincato	Nuts: zinc plated steel	Mutter: verzinkter Stahl

Part	Article-Nr.	Z-	Bore	PD	OD	S
545	54501	9	25	111,4	110,0	59,3
545	54502		30			
545	54503		35			
545	54504		40			
546	54601	10	25	123,3	122,0	65,25
546	54602		30			
546	54603		35			
546	54604		40			
547	54701	11	25	135,2	135,0	71,2
547	54702		30			
547	54703		35			
547	54704		40			
548	54801	12	25	147,2	147,3	77,2
548	54802		30			
548	54803		35			
548	54804		40			



**Ruota rinvio divisa, fresata / Split idler sprocket, machined / geteiltes Umlenkrad, gefräst**

Part	Article-Nr.	Z-	Bore	PD	OD	S
545	54550	9	18*	111,4	110,0	59,3
545	54551		25			
545	54552		30			
545	54553		35			
545	54554		40			
546	54650	10	18*	123,3	122,0	65,25
546	54651		25			
546	54652		30			
546	54653		35			
546	54654		40			
547	54750	11	18*	135,2	135,0	71,2
547	54751		25			
547	54752		30			
547	54753		35			
547	54754		40			
548	54850	12	18*	147,2	147,3	77,2
548	54851		25			
548	54852		30			
548	54853		35			
548	54854		40			

\*Plain Bore



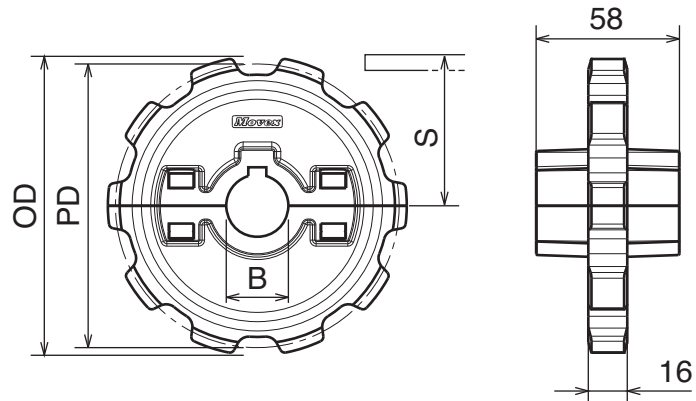
Materiale:	Material:	Materialien:
Poliamide rinforzato	Polyamide reinforced	Verstärktes Polyamid
Viti: Acciaio inox	Screws: Stainless steel	Schrauben: Edelstahl
Dadi: ottone nichelato	Nuts: nickel plated brass	Mutter: Messing vernickelt

Also suitable for series  
828 - 878 - 879M - 879TAB

**Ruota traino divisa, stampata / Split drive sprocket, molded / geteiltes Antriebskettenrad, gespritzt**



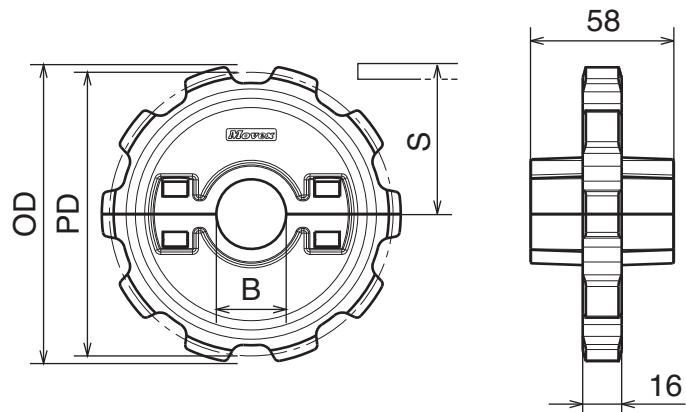
Part	Article-Nr.	Z-	Bore	PD	OD	S
549	54901	10	25	123,2	122,0	65,25
549	54902		30			
549	54903		35			
549	54904		40			
550	55001	12	25	147,2	147,3	77,2
550	55002		30			
550	55003		35			
550	55004		40			



**Ruota rinvio divisa, stampata / Split idler sprocket, molded / geteiltes Umlenkrad, gespritzt**



Part	Article-Nr.	Z-	Bore	PD	OD	S
549	54951	10	25	123,2	122,0	65,25
549	54952		30			
549	54953		35			
549	54954		40			
550	55051	12	25	147,2	147,3	77,2
550	55052		30			
550	55053		35			
550	55054		40			

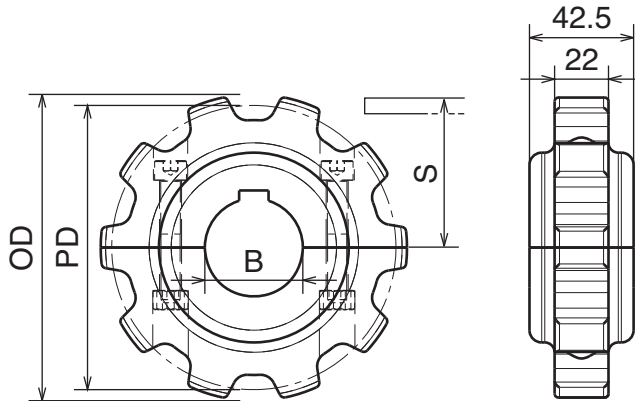


**Also suitable for series 8257**

Materiale:	Material:	Materialien:
Poliammide	Polyamide	Polyamid
Viti: Acciaio inox	Screws: Stainless steel	Schrauben: Edelstahl
Dadi: ferro zincato	Nuts: zinc plated steel	Mutter: verzinkter Stahl



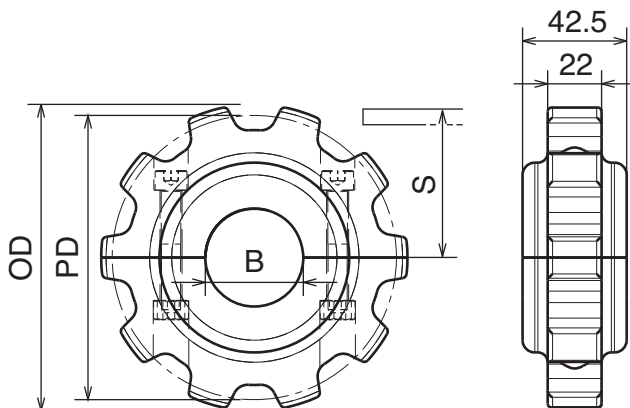
**Ruota traino divisa, fresata / Split drive sprocket, machined / geteiltes Antriebskettenrad, gefräst**



Part	Article-Nr.	Z-	Bore	PD	OD	S
551	55101	9	25	111,4	112,0	60,5
551	55102		30			
551	55103		35			
551	55104		40			
552	55201	10	25	123,2	125,0	66,4
552	55202		30			
552	55203		35			
552	55204		40			
553	55301	11	25	135,2	137,0	72,4
553	55302		30			
553	55303		35			
553	55304		40			
554	55401	12	25	147,2	149,0	78,4
554	55402		30			
554	55403		35			
554	55404		40			



**Ruota rinvio divisa, fresata / Split idler sprocket, machined / geteiltes Umlenkrad, gefräst**



Part	Article-Nr.	Z-	Bore	PD	OD	S
551	55150	9	18*	111,4	112,0	60,5
551	55151		25			
551	55152		30			
551	55153		35			
551	55154		40			
552	55250	10	18*	123,2	125,0	66,4
552	55251		25			
552	55252		30			
552	55253		35			
552	55254		40			
553	55350	11	18*	135,2	137,0	72,4
553	55351		25			
553	55352		30			
553	55353		35			
553	55354		40			
554	55450	12	18*	147,2	149,0	78,4
554	55451		25			
554	55452		30			
554	55453		35			
554	55454		40			

\*Plain Bore

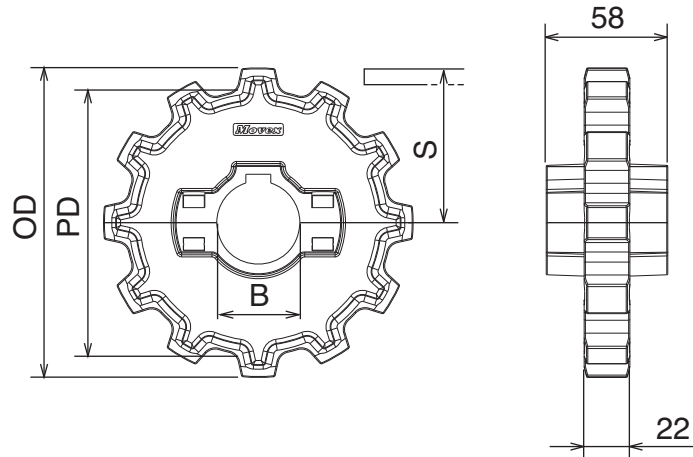
Materiale:	Material:	Materialien:
Poliamide rinforzato	Polyamide reinforced	Verstärktes Polyamid
Viti: Acciaio inox	Screws: Stainless steel	Schrauben: Edelstahl
Dadi: ottone nichelato	Nuts: nickel plated brass	Mutter: messing vernickelt

Also suitable for series  
8257



**Ruota traino divisa, stampata / Split drive sprocket, molded / geteiltes Antriebskettenrad, gespritzt**

Part	Article-Nr.	Z-	Bore	PD	OD	S
555	55501	10	25	123,2	125,0	66,4
555	55502		30			
555	55503		35			
555	55504		40			
556	55601	12	25	147,2	149,0	78,4
556	55602		30			
556	55603		35			
556	55604		40			



**Ruota rinvio divisa, stampata / Split idler sprocket, molded / geteiltes Umlenkrad, gespritzt**

Part	Article-Nr.	Z-	Bore	PD	OD	S
555	55551	10	25	123,2	125,0	66,4
555	55552		30			
555	55553		35			
555	55554		40			
556	55651	12	25	147,2	149,0	78,4
556	55652		30			
556	55653		35			
556	55654		40			

