

15. BEARING UNITS AND BEARING HOUSINGS



ZESPOŁY ŁOZYSKOWE

CAST IRON BALL



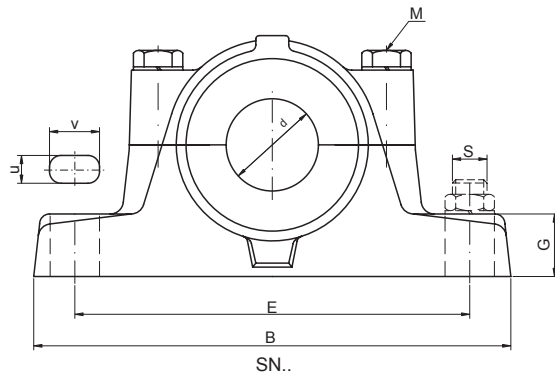
ON BALL BEARING UNITS

POŁY ŁOZYSKOWE

ZESPOŁY ŁOZY

15. BEARING UNITS AND BEARING HOUSINGS

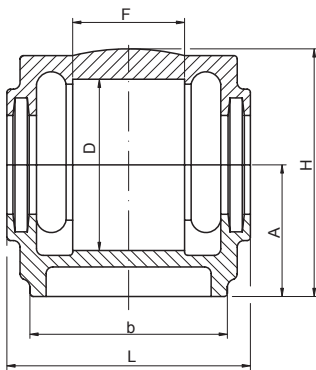
15.12. Split bearing housings for spherical roller and self aligning bearings – type SN



Unit No.	Dimensions [mm]													
	d	D	B	b	G	F	A	L	H	E	bolt size	u	v	S
SN505	20	52	165	46	22	25	40	67	75	130	M8	15	20	M12
SN605	20	62	185	52	22	34	50	80	90	150	M8	16	20	M12
SN506	25	62	185	52	22	30	50	77	90	150	M8	15	20	M12
SN606	25	72	185	52	22	37	50	82	95	150	M10	16	20	M12
SN507	30	72	185	52	22	33	50	82	95	150	M10	15	20	M12
SN607	30	80	205	60	25	41	60	90	110	170	M10	16	20	M12
SN508	35	80	205	60	25	33	60	85	110	170	M10	15	20	M12
SN608	35	90	205	60	25	43	60	95	115	170	M10	15	24	M12
SN509	40	85	205	60	25	31	60	85	112	170	M10	15	20	M12
SN609	40	100	255	70	28	46	70	105	130	210	M12	19	25	M16
SN510	45	90	205	60	25	33	60	90	115	170	M10	15	20	M12
SN610	45	110	255	70	30	50	70	115	135	210	M12	18	23	M16
SN511	50	100	255	70	28	33	70	95	130	210	M12	18	23	M16
SN611	50	120	275	80	30	53	80	120	150	230	M12	20	28	M16
SN512	55	110	255	70	30	38	70	105	135	210	M12	18	23	M16
SN612	55	130	280	80	30	56	80	125	155	230	M12	20	28	M16
SN513	60	120	275	80	30	43	80	110	150	230	M12	18	23	M16
SN613	60	140	315	90	32	58	95	130	175	260	M16	22	30	M20
SN515	65	130	280	80	30	41	80	115	155	230	M12	18	23	M16
SN615	65	160	345	100	35	65	100	140	195	290	M16	23	28	M20
SN516	70	140	315	90	32	43	95	120	175	260	M16	22	27	M20
SN616	70	170	345	100	35	68	112	145	212	290	M16	23	30	M20
SN517	75	150	320	90	32	46	95	125	185	260	M16	22	27	M20
SN617	75	180	380	110	40	70	112	155	218	320	M20	26	35	M24
SN518	80	160	345	100	35	62.4	100	145	195	290	M16	22	27	M20
SN618	80	190	400	110	33	74	112	160	230	320	M20	27	38	M24
SN519	85	170	345	100	35	53	112	140	210	290	M16	22	28	M20
SN619	85	200	420	120	36	77	125	170	245	350	M20	28	36	M24
SN520	90	180	380	110	40	70.3	112	160	218	320	M20	26	32	M24
SN620	90	215	420	120	38	83	140	175	280	350	M20	27	33	M24
SN522	100	200	410	120	45	80	125	175	240	350	M20	26	32	M24
SN622	100	240	460	130	40	90	150	190	300	390	M20	28	32	M24
SN524	110	215	410	120	45	86	140	185	270	350	M20	26	34	M24
SN624	110	260	540	160	50	96	160	205	325	450	M24	34	42	M30
SN526	115	230	445	130	50	90	150	190	290	380	M24	28	35	M24
SN626	115	280	560	160	50	103	170	215	350	470	M24	34	42	M30
SN528	125	250	500	150	50	98	150	205	305	420	M24	34	44	M30
SN628	125	300	630	170	55	112	180	235	375	520	M30	34	46	M30
SN530	135	270	530	160	60	106	160	220	325	450	M24	34	42	M30
SN630	135	320	680	180	55	118	190	245	395	560	M30	38	44	M30
SN532	140	290	550	160	60	114	170	235	345	470	M24	32	44	M30
SN632	140	340	710	190	60	124	200	255	415	580	M30	40	52	M36

🏠 - warehouse ☎ - order 📞 - phone

15.12. Split bearing housings for spherical roller and self aligning bearings – type SN



Weight [kg]	Equivalent	Basic makes*	
		Basic makes*	Unit No.
1,5	SNH505 TC	☰	SN505
2,11	SNH605 TC	⊖	SN605
1,74	SNH506 TC	☰	SN506
2,09	SNH606 TC	⊖	SN606
1,9	SNH507 TC	☰	SN507
3,4	SNH607 TC	⊖	SN607
2,63	SNH508 TC	☰	SN508
3,6	SNH608 TC	⊖	SN608
2,64	SNH509 TC	☰	SN509
5,3	SNH609 TC	⊖	SN609
2,8	SNH510 TC	☰	SN510
5,5	SNH610 TC	⊖	SN610
4,32	SNH511 TC	☰	SN511
6,9	SNH611 TC	⊖	SN611
4,99	SNH512 TC	☰	SN512
8,8	SNH612 TC	⊖	SN612
5,64	SNH513 TC	☰	SN513
9,8	SNH613 TC	⊖	SN613
6,19	SNH515 TC	☰	SN515
13	SNH615 TC	⊖	SN615
8,17	SNH516 TC	☰	SN516
15,5	SNH616 TC	⊖	SN616
9,37	SNH517 TC	☰	SN517
16,3	SNH617 TC	⊖	SN617
11,5	SNH518 TC	☰	SN518
20	SNH618 TC	⊖	SN618
13,5	SNH519 TC	☰	SN519
28	SNH619 TC	⊖	SN619
16,3	SNH520 TC	☰	SN520
30,5	SNH620 TC	⊖	SN620
25,1	SNH522 TC	☰	SN522
42	SNH622 TC	⊖	SN622
72,2	SNH524 TC	☰	SN524
59	SNH624 TC	⊖	SN624
35,2	SNH526 TC	☰	SN526
61,5	SNH626 TC	⊖	SN626
43,7	SNH528 TC	☰	SN528
88	SNH628 TC	⊖	SN628
45,3	SNH530 TC	☰	SN530
89	SNH630 TC	⊖	SN630
50,75	SNH532 TC	☰	SN532
127	SNH632 TC	⊖	SN632

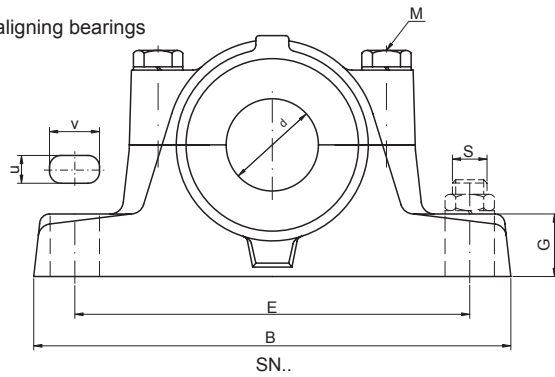
* Other products also available



15. BEARING UNITS

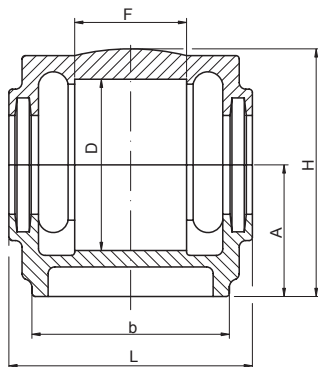
15.12. Split bearing housings for spherical roller and self aligning bearings

– type SN – Application



Unit No.	SELF - ALIGNING BALL BEARINGS							
	bearing	sleeve	retaining ring		bearing	sleeve	retaining ring	
			PU..	pcs			PU..	pcs
SN505	1205 K	H205	52X5	2	2205 K	H305	52X7	1
SN605	1305 K	H305	62X8,5	2	2305 K	H2305	62X10	1
SN506	1206 K	H206	62X7	2	2206 K	H606	62X10	1
SN606	1306 K	H306	72X9	2	2306 K	H2306	72X10	1
SN507	1207 K	H207	72X8	2	2207 K	H307	72X10	1
SN607	1307 K	H307	80X10	2	2307 K	H2307	80X10	1
SN508	1208 K	H208	80X7,5	2	2208 K	H308	80X10	1
SN608	1308 K	H308	90X10	2	2308 K	H2308	90X10	1
SN509	1209 K	H209	85X6	2	2209 K	H309	85X8	1
SN609	1309 K	H309	100X10,5	2	2309 K	H2309	100X10,5	1
SN510	1210 K	H210	90X6,5	2	2210 K	H310	90X10	1
SN610	1310 K	H310	100X11,5	2	2310 K	H2310	110X10	1
SN511	1211 K	H211	100X6	2	2211 K	H311	100X8	1
SN611	1311 K	H311	120X12	2	2311 K	H2311	120X10	1
SN512	1212 K	H212	110X8	2	2212 K	H312	110X10	1
SN612	1312 K	H312	130X12,5	2	2312 K	H2312	130X10	1
SN513	1213 K	H213	120X10	2	2213 K	H313	120X12	1
SN613	1313 K	H313	140X12,5	2	2313 K	H2313	140X10	1
SN515	1215 K	H215	130X8	2	2215 K	H315	130X10	1
SN615	1315 K	H315	160X14	2	2315 K	H2315	160X10	1
SN516	1216 K	H216	140X8,5	2	2216 K	H316	140X10	1
SN616	1316 K	H316	170X14,5	2	2316 K	H2316	170X10	1
SN517	1217 K	H217	150X9	2	2217 K	H317	150X10	1
SN617	1317 K	H317	180X14,5	2	2317 K	H2317	180X10	1
SN518	1218 K	H218	160X16,2	2	2218 K	H318	160X11,2	2
SN618	1318 K	H318	190X15,5	2	2318 K	H2318	190X10	1
SN519	1219 K	H219	170X10,5	2	-	-	-	-
SN619	1319 K	H319	200X16	2	2319 K	H2319	100X10	1
SN520	2220 K	H320	180X12,1	2	-	-	-	-
SN620	1320 K	H320	215X18	2	2320 K	H2320	215X10	1
SN522	2222 K	H322	200X13,5	2	-	-	-	-
SN622	1322 K	H322	240X20	2	2322 K	H2322	240X10	1
SN524	-	-	-	-	-	-	-	-
SN624	-	-	-	-	-	-	-	-
SN526	-	-	-	-	-	-	-	-
SN626	-	-	-	-	-	-	-	-
SN528	-	-	-	-	-	-	-	-
SN628	-	-	-	-	-	-	-	-
SN530	-	-	-	-	-	-	-	-
SN630	-	-	-	-	-	-	-	-
SN532	-	-	-	-	-	-	-	-
SN632	-	-	-	-	-	-	-	-

15.12. Split bearing housings for spherical roller and self aligning bearings – type SN

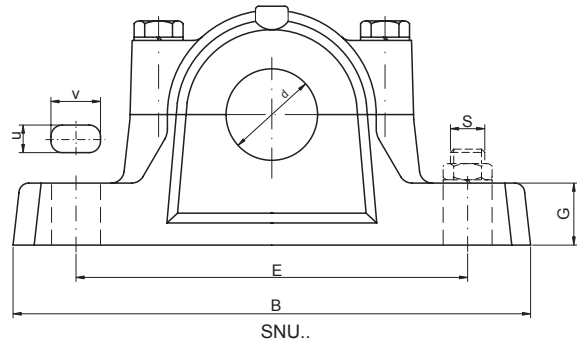


SPHERICAL ROLLER BEARINGS							Unit No.	
bearing	sleeve	retaining ring		bearing	sleeve	retaining ring		
		PU..	pcs			PU..		pcs
22205 K	H305	52X7	1	-	-	-	-	SN505
-	-	-	-	-	-	-	-	SN605
22206 K	H606	62X10	1	-	-	-	-	SN506
-	-	-	-	-	-	-	-	SN606
22207 K	H307	72X10	1	-	-	-	-	SN507
-	-	-	-	-	-	-	-	SN607
22208 K	H308	80X10	1	-	-	-	-	SN508
21308 K	H308	90X10	2	22308 K	H2308	90X10	1	SN608
22209 K	H309	85X8	1	-	-	-	-	SN509
21309 K	H309	100X10,5	2	22309 K	H2309	100X10,5	1	SN609
22210 K	H310	90X10	1	-	-	-	-	SN510
21310 K	H310	100X11,5	2	22310 K	H2310	110X10	1	SN610
22211 K	H311	100X8	1	-	-	-	-	SN511
21311 K	H311	120X12	2	22311 K	H2311	120X10	1	SN611
22212 K	H312	110X10	1	-	-	-	-	SN512
21312 K	H312	130X12,5	2	22312 K	H2312	130X10	1	SN612
22213 K	H313	120X12	1	-	-	-	-	SN513
21313 K	H313	140X12,5	2	22313 K	H2313	140X10	1	SN613
22215 K	H315	130X10	1	-	-	-	-	SN515
21315 K	H315	160X14	2	22315 K	H2315	160X10	1	SN615
22205 K	H316	140X10	1	-	-	-	-	SN516
21316 K	H316	170X14,5	2	22316 K	H2316	170X10	1	SN616
22205 K	H317	150X10	1	-	-	-	-	SN517
21317 K	H317	180X14,5	2	22317 K	H2317	180X10	1	SN617
22218 K	H318	160X11,2	2	-	-	-	-	SN518
22318 K	H2318	190X10	1	-	-	-	-	SN618
22219 K	H319	170X10	1	-	-	-	-	SN519
22319 K	H2319	100X10	1	-	-	-	-	SN619
22220 K	H320	180X12,1	2	23220 K	H2320	180X10	1	SN520
22320 K	H2320	215X10	1	-	-	-	-	SN620
22222 K	H322	200X13,5	2	23222 K	H2322	200X10	1	SN522
22322 K	H2322	240X10	1	-	-	-	-	SN622
22224 K	H3124	215X14	2	23224 K	H2324	215X10	1	SN524
22324 K	H2324	260X10	1	-	-	-	-	SN624
22226 K	H3126	230X13	2	23226 K	H2326	230X10	1	SN526
22326 K	H2326	280X10	1	-	-	-	-	SN626
22228 K	H3128	250X15	2	23228 K	H2328	250X10	1	SN528
22328 K	H2328	300X10	1	-	-	-	-	SN628
22230 K	H3130	270X16,5	2	23230 K	H2330	270X10	1	SN530
22330 K	H2330	320X10	1	-	-	-	-	SN630
22232 K	H3132	290X17	2	23232 K	H2332	290X10	1	SN532
22322 K	H2332	340X10	1	-	-	-	-	SN632



15. BEARING UNITS AND BEARING HOUSINGS

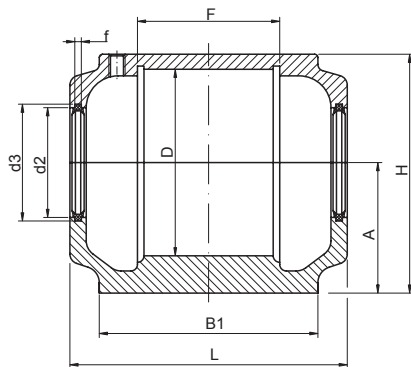
15.13. Split bearing housings for spherical roller and self aligning bearings – type SNU



Unit No.	Dimensions [mm]															
	d	L	B1	f	F	D	d2	d3	H	A	G	E	B	v	u	S
SNU505	20	67	46	5	25	52	31,5	39,5	72	40	19	130	165	20	13	10
SNU605	20	77	52	5	32	62	36,5	44,5	87	50	22	150	185	22	13	10
SNU506	25	77	52	5	32	62	36,5	44,5	87	50	22	150	185	22	13	10
SNU606	25	82	52	5	34	72	46,5	54,5	92	50	22	150	185	20	13	10
SNU507	30	82	52	5	34	72	46,5	54,5	92	50	22	150	185	20	13	10
SNU607	30	85	60	5	39	80	51,5	59,5	106	60	25	170	205	20	15	12
SNU508	35	85	60	5	39	80	51,5	59,5	106	60	25	170	205	20	15	12
SNU608	35	90	60	5	41	90	62	70,5	112	60	25	170	205	20	15	12
SNU509	40	85	60	5	30	85	56,5	64,5	108	60	25	170	205	20	15	12
SNU609	40	95	70	5	44	100	67	75,5	126	70	28	210	255	23	18	16
SNU510	45	90	60	5	41	90	62	70,5	112	60	25	170	205	20	15	12
SNU610	45	105	70	5	48	110	72	80,5	132	70	30	210	255	23	18	16
SNU511	50	95	70	5	44	100	67	75,5	126	70	28	210	255	23	18	16
SNU611	50	110	80	5	51	120	77	85,5	147	80	30	230	275	24	18	16
SNU512	55	105	70	5	48	110	72	80,5	132	70	30	210	255	23	18	16
SNU612	55	115	80	5	56	130	87	95,5	153	80	30	230	280	26	18	16
SNU513	60	110	80	5	51	120	77	85,5	147	80	30	230	275	24	18	16
SNU613	60	120	90	5	58	140	92,5	101	174	95	32	260	315	29	22	20
SNU515	65	115	80	5	56	130	87	95,5	153	80	30	230	280	26	18	16
SNU615	65	140	100	5	65	160	105	111	190	100	35	290	345	27	22	20
SNU516	70	120	90	5	58	140	92,5	101	174	95	32	260	315	29	22	20
SNU616	70	145	100	6	68	170	131	141	208,5	112	35	290	345	27	22	20
SNU517	75	125	90	5	61	150	97,5	106	180	95	32	260	320	30	22	20
SNU617	75	160	110	6	70	180	137,5	147,5	214,5	112	40	320	380	32	26	24
SNU518	80	140	100	5	65	160	105	111	190	100	35	290	345	27	22	20
SNU618	85	145	100	6	68	170	131	141	208,5	112	35	290	345	27	22	20
SNU519	85	175	120	6	80	200	147,5	157,5	238,5	125	45	350	410	32	26	24
SNU619	90	160	110	6	70	180	137,5	147,5	214,5	112	40	320	380	32	26	24
SNU520	90	185	120	6	86	215	157,5	167,5	271	140	45	350	410	32	26	24
SNU620	90	185	120	6	86	215	157,5	167,5	271	140	45	350	410	32	26	24
SNU522	100	175	120	6	80	200	147,5	157,5	238,5	125	45	350	410	32	26	24
SNU524	110	185	120	6	86	215	157,5	167,5	271	140	45	350	410	32	26	24
SNU526	115	190	130	6	90	230	167,5	177,5	290	150	50	380	445	35	28	24
SNU528	125	205	150	6	98	250	177,5	187,5	302	150	50	420	500	42	35	30
SNU530	135	220	160	6	106	270	192,5	202,5	323	160	60	450	530	42	25	30
SNU532	140	235	160	6	114	290	202,5	212,5	344	170	60	470	550	42	35	30

🏠 - warehouse ☎ - order 📞 - phone

15.13. Split bearing housings for spherical roller and self aligning bearings – type SNU



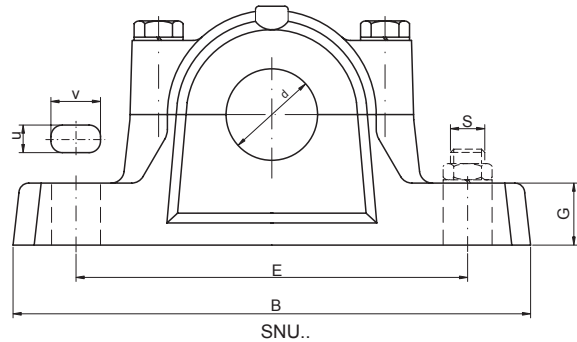
Weight [kg]	Equivalent		Basic makes*	Unit No.
			-	
1,5	SNH505	SNH505 TC	☒	SNU505
2	SNH506-605	SNH605 TC	⊕	SNU605
2	SNH506-605	SNH506 TC	☒	SNU506
2,32	SNH507-606	SNH606 TC	⊕	SNU606
2,32	SNH507-606	SNH507 TC	☒	SNU507
2,9	SNH508-607	SNH607 TC	⊕	SNU607
2,9	SNH508-607	SNH508 TC	☒	SNU508
3,31	SNH510-608	SNH608 TC	⊕	SNU608
3,1	SNH509	SNH509 TC	☒	SNU509
4,54	SNH511-609	SNH609 TC	⊕	SNU609
3,31	SNH510-608	SNH510 TC	☒	SNU510
5,47	SNH512-610	SNH610 TC	⊕	SNU610
4,54	SNH511-609	SNH511 TC	☒	SNU511
6,6	SNH513-611	SNH611 TC	⊕	SNU611
5,47	SNH512-610	SNH512 TC	☒	SNU512
7,3	SNH515-612	SNH612 TC	⊕	SNU612
6,6	SNH513-611	SNH513 TC	☒	SNU513
9,95	SNH516-613	SNH613 TC	⊕	SNU613
7,3	SNH515-612	SNH515 TC	☒	SNU515
13,3	SNH518-615	SNH615 TC	⊕	SNU615
9,95	SNH516-613	SNH516 TC	☒	SNU516
15	SNH519-616	SNH616 TC	⊕	SNU616
10,82	SNH517-614	SNH517 TC	☒	SNU517
18,8	SNH520-617	SNH617 TC	⊕	SNU617
13,3	SNH518-615	SNH518 TC	☒	SNU518
15	SNH519-616	SNH519 TC	☒	SNU519
23,5	SNH522-619	SNH619 TC	⊕	SNU619
18,8	SNH520-617	SNH520 TC	☒	SNU520
28	SNH524-620	SNH620 TC	⊕	SNU620
23,5	SNH522-619	SNH522 TC	☒	SNU522
28	SNH524-620	SNH524 TC	☒	SNU524
34	SNH526	SNH526 TC	☒	SNU526
41,5	SNH528	SNH528 TC	☒	SNU528
50,5	SNH530	SNH530 TC	☒	SNU530
56,7	SNH532	SNH532 TC	☒	SNU532

* Other products also available



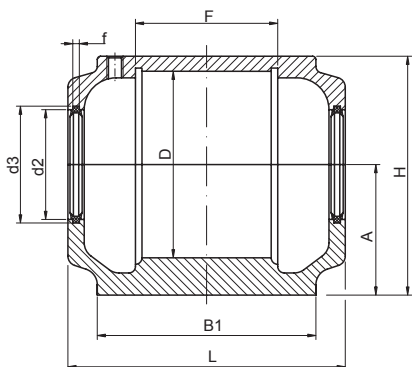
15. BEARING UNITS

15.13. Split bearing housings for spherical roller and self aligning bearings – type SNU – Application



Unit No.	Seal	Closing cap	SELF - ALIGNING BALL BEARINGS							
			bearing	sleeve	retaining ring		bearing	sleeve	retaining ring	
					PU..	pcs			PU..	pcs
SNU505	U505	505A	1205 K	H205	52X10	1	2205 K	H305	52X7	1
SNU605	U605	506A	1305 K	H305	62X7,5	2	2305 K	H2305	62X8	1
SNU506	U506	506A	1206 K	H206	62X8	2	2206 K	H306	62X6	2
SNU606	U606	507A	1306 K	H306	72X7,5	2	2306 K	H2306	72X7,5	1
SNU507	U507	507A	1207 K	H207	72X8,5	2	2207 K	H307	72X5,5	2
SNU607	U607	508A	1307 K	H307	80X9	2	2307 K	H2307	80X8	1
SNU508	U508	508A	1208 K	H208	80X10,5	2	2208 K	H308	80X8	2
SNU608	U608	510A	1308 K	H308	90X9	2	2308 K	H2308	90X8	1
SNU509	U509	509A	1209 K	H209	85X5,5	2	2209 K	H309	85X7	1
SNU609	U609	511A	1309 K	H309	100X9,5	2	2309 K	H2309	100X8	1
SNU510	U510	510A	1210 K	H210	90X10,5	2	2210 K	H310	90X9	2
SNU610	U610	512A	1310 K	H310	110X10,5	2	2310 K	H2310	110X8	1
SNU511	U511	511A	1211 K	H211	100X11,5	2	2211 K	H311	100X9,5	2
SNU611	U611	513A	1311 K	H311	120X11	2	2311 K	H2311	120X8	1
SNU512	U512	512A	1212 K	H212	110X13	2	2212 K	H312	110X10	2
SNU612	U612	515A	1312 K	H312	130X12,5	2	2312 K	H2312	130X10	1
SNU513	U513	513A	1213 K	H213	120X14	2	2213 K	H313	120X10	2
SNU613	U613	516A	1313 K	H313	140X12,5	2	2313 K	H2313	140X10	1
SNU515	U515	515A	1215 K	H215	130X15,5	2	2215 K	H315	130X12,5	2
SNU615	U615	518A	1315 K	H315	160X14	2	2315 K	H2315	160X10	1
SNU516	U516	516A	1216 K	H216	140X16	2	2216 K	H316	140X12,5	2
SNU616	U616	519A	1316 K	H316	170X14,5	2	2316 K	H2316	170X10	1
SNU517	U517	517A	1217 K	H217	150X16,5	2	2217 K	H317	150X12,5	2
SNU617	U617	520A	1317 K	H317	180X14,5	2	2317 K	H2317	180X10	1
SNU518	U518	518A	1218 K	H218	160X17,5	2	2218 K	H318	160X12,5	2
SNU519	U519	519A	1219 K	H219	170X18	2	2219 K	H319	170X12,5	2
SNU619	U619	522A	-	-	-	-	-	-	-	-
SNU520	U520	520A	1220 K	H220	180X18	2	2220 K	H320	180X12	2
SNU620	U620	524A	-	-	-	-	-	-	-	-
SNU522	U522	522A	1222 K	H222	200X21	2	2222 K	H322	200X13,5	2
SNU524	U524	524A	-	-	-	-	-	-	-	-
SNU526	U526	526A	-	-	-	-	-	-	-	-
SNU528	U528	528A	-	-	-	-	-	-	-	-
SNU530	U530	530A	-	-	-	-	-	-	-	-
SNU532	U532	532A	-	-	-	-	-	-	-	-

15.13. Split bearing housings for spherical roller and self aligning bearings – type SNU **CX**[®]



SPHERICAL ROLLER BEARINGS						Unit No.		
bearing	sleeve	retaining ring		bearing	sleeve		retaining ring	
		PU..	pcs					PU..
-	-	-	-	-	-	-	SNU505	
-	-	-	-	-	-	-	SNU605	
-	-	-	-	-	-	-	SNU506	
-	-	-	-	-	-	-	SNU606	
22207 K	H307	72X5,5	2	-	-	-	SNU507	
-	-	-	-	-	-	-	SNU607	
22208 K	H308	80X8	2	-	-	-	SNU508	
21308 K	H308	90X9	2	22308 K	H2308	90X8	1	SNU608
22209 K	H309	85X7	1	-	-	-	-	SNU509
21309 K	H309	100X9,5	2	22309 K	H2309	100X8	1	SNU609
22210 K	H310	90X9	2	-	-	-	-	SNU510
21310 K	H310	110X10,5	2	22310 K	H2310	110X8	1	SNU610
22211 K	H311	100X9,5	2	-	-	-	-	SNU511
21311 K	H311	120X11	2	22311 K	H2311	120X8	1	SNU611
22212 K	H312	110X10	2	-	-	-	-	SNU512
21312 K	H312	130X12,5	2	22312 K	H2312	130X10	1	SNU612
22213 K	H313	120X10	2	-	-	-	-	SNU513
21313 K	H313	140X12,5	2	22313 K	H2313	140X10	1	SNU613
22215 K	H315	130X12,5	2	-	-	-	-	SNU515
21315 K	H315	160X14	2	22315 K	H2315	160X10	1	SNU615
22216 K	H316	140X12,5	2	-	-	-	-	SNU516
21616 K	H316	170X14,5	2	22316 K	H2316	170X10	1	SNU616
22217 K	H317	150X12,5	2	-	-	-	-	SNU517
21717 K	H317	180X14,5	2	22317 K	H2317	180X10	1	SNU617
22218 K	H318	160X12,5	2	23218 K	H2318	160X12,5	1	SNU518
22219 K	H319	170X12,5	2	-	-	-	-	SNU519
22319 K	H2319	200X13	1	-	-	-	-	SNU619
22220 K	H320	180X12	2	23220 K	H2320	180X9,7	1	SNU520
22320 K	H2320	215X13	1	-	-	-	-	SNU620
22222 K	H322	200X13,5	2	23222 K	H2322	200X10	1	SNU522
22224 K	H3124	215X14	2	23224 K	H2324	215X10	1	SNU524
22226 K	H3126	230X13	2	23226 K	H2326	230X10	1	SNU526
22228 K	H3128	250X15	2	23228 K	H2328	250X10	1	SNU528
22230 K	H3130	270X16,5	2	23230 K	H2330	270X10	1	SNU530
22232 K	H3132	290X17	2	23232 K	H2332	290X10	1	SNU532

