



Customizable,  
High-Quality, Heavy Duty,  
Industrial-Grade Actuators

# INDUSTRIAL MOTION





# TiMOTION ELECTRONIC LINEAR ACTUATORS – MOTION TECHNOLOGY THAT HELPS PROVIDE A CLEANER, BETTER FUTURE

Many industrial applications require heavy-duty automation on a large scale — especially for agricultural, construction, mining, ventilation, and process control machinery, among others. The technology is out there, and it's only getting better. Equipment manufacturers are increasingly turning to electric linear actuators as a cost-efficient and reliable alternative to previous industry standards, such as hydraulic and pneumatic motion systems. TiMOTION's Industrial Motion product line is shown within this catalog, as well as additional information about what we offer and the full benefits of our linear actuator technology.

# JP series

TiMOTION's JP series family is designed with an inline actuator appearance. All the products in the JP series are ideally suited for high or low load required industrial applications where up to IP69K dust and liquid ingress protection is necessary. The JP series is made for use in limited spaces without sacrificing power.



## JP3 - Page 10

**Max. load**

2,000N (push/pull)

**Max. speed at max. load**

3.5mm/s

**Max. speed at no load**

23.5mm/s

**Retracted length**

≥ Stroke + 217mm

**IP rating**

IP69K



## JP4 - Page 12

**Max. load**

4,500N (push)

3,000N (pull)

**Max. speed at max. load**

2.5mm/s

**Max. speed at no load**

27.5mm/s

**Retracted length**

≥ Stroke + 289mm

**IP rating**

IP69K

# MA series

TiMOTION's MA series family is specifically designed for harsh working environments, requiring a durable, long-life solution. All of our MA series actuators are ideal for the heavy-duty machinery, industrial equipment and off road vehicles. Also, they all comply with IP69K protection that will withstand high-pressure water jets, and the ingress of dust and other solid contaminants.



MA1 - Page 14

**Max. load**

ACME screw: 2,500N  
(push/pull)  
Ball screw: 4,500N  
(push/pull)

**Max. speed at max. load**

14.3mm/s  
(ACME screw, DC motor)  
14mm/s  
(Ball screw, DC motor)

**Max. speed at no load**

58.5mm/s  
(Ball screw, DC motor)

**Retracted length**

≥ Stroke + 160mm  
(ACME screw, without POT)  
≥ Stroke + 201mm  
(Ball screw, without POT)

**IP rating**

IP69K



MA2 - Page 16

**Max. load**

8,000N (push/pull)

**Max. speed at max. load**

5.4mm/s

**Max. speed at no load**

52.5mm/s

**Retracted length**

≥ Stroke + 131mm

**IP rating**

IP69K



MA2T - Page 18

**Max. load**

8,000N (push/pull)

**Max. speed at max. load**

5.4mm/s

**Max. speed at no load**

52.5mm/s

**Retracted length**

≥ Stroke + 131mm

**IP rating**

IP69K



MA4 - Page 20

**Max. load**

3,500N (push)  
2,000N (pull)

**Max. speed at max. load**

1.8mm/s

**Max. speed at no load**

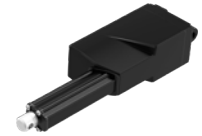
43mm/s

**Retracted length**

≥ Stroke + 106mm (min.  
retracted length has to be  
greater than 213mm)

**IP rating**

IP69K



MA5 - Page 22

**Max. load**

3,500N (push)  
2,000N (pull)

**Max. speed at max. load**

2.4mm/s

**Max. speed at no load**

56.5mm/s

**Retracted length**

≥ 200mm (depending on  
chosen fixation type)

**IP rating**

IP69K

# TA series

TiMOTION's TA series family is a well-developed product line for the industrial market segment. All the products in the TA series have a compact design, and can meet the demands of high-force, high-speed, and low noise requirements. The TA series is recommended for use in small spaces where force or capability cannot be sacrificed.



TA2 - Page 24

**Max. load**  
1,000N (push/pull)  
**Max. speed at max. load**  
7.6mm/s  
**Max. speed at no load**  
67.5mm/s  
**Retracted length**  
≥ Stroke + 105mm (without  
output signals)  
**IP rating**  
IP66D



TA2P - Page 26

**Max. load**  
3,500N (push)  
2,000N (pull)  
**Max. speed at max. load**  
2.4mm/s  
**Max. speed at no load**  
56.5mm/s  
**Retracted length**  
≥ Stroke + 108mm (with  
Hall sensors or without  
output signals)  
**IP rating**  
IP66D



TA16 - Page 28

**Max. load**  
3,500N (push/pull)  
**Max. speed at max. load**  
6.2mm/s  
**Max. speed at no load**  
23.5mm/s  
**Retracted length**  
≥ Stroke + 112mm  
**IP rating**  
IP66



TA21 - Page 30

**Max. load**  
10,000N (push)  
6,000N (pull)  
**Max. speed at max. load**  
6.3mm/s  
**Max. speed at no load**  
24.7mm/s  
**Retracted length**  
≥ 67mm



TA38 - Page 32

**Max. load**  
1,500N (push/pull)  
**Max. speed at max. load**  
9mm/s  
**Max. speed at no load**  
15.7mm/s  
**Retracted length**  
≥ 160mm  
**IP rating**  
IP66

# VN series



TiMOTION's VN series is designed especially for automated ventilation systems. Whether trying to improve the indoor air quality in the building through lower peak summer temperatures or enhancing the interior climate in livestock houses, our VN series can meet the growing demand for ventilation applications. All the actuator in our VN series have metallic appearance with an IP66 rating.

## VN1 - Page 34

**Max. load**

3,500N (push/pull)

**Max. speed at max. load**

4.2mm/s

**Max. speed at no load**

10.4mm/s

**Retracted length**

≥ 181mm

(DC version, w/o T-Smart)

≥ 401mm

(AC version)

\* With front attachment #1,  
2, or 3

\* Required outer tube  
adjustble attachment

**IP rating**

IP66

# TL series

TiMOTION's TL (lifting column) series is made up of two or three extruded aluminum tubes of rectangular shape that give the system great stability and a high stroke with reduced retracted length. Our electric lifting columns are perfect for industrial applications such as height-adjustable workstations, screens and lifting tables.



## TL3 - Page 36

**Max. load**  
4,000N (push)

**Self-locking force**  
4,000N

**Max. dynamic bending moment**  
1,000Nm

**Max. speed at max. load**  
13.7mm/s

**Max. speed at no load**  
39mm/s

**Retracted length**  
 $\geq \text{Stroke}/2 + 150\text{mm}$

**IP rating**  
IPX6



## TL17 - Page 38

**Max. load**  
2,000N (push)

**Max. dynamic bending moment**  
250Nm

**Max. speed at max. load**  
11.5mm/s

**Max. speed at no load**  
41mm/s

**Retracted length**  
 $\geq \text{Stroke}/2 + 150\text{mm}$

**IP rating**  
IPX6



## TL18 - Page 40

**Max. load**  
4,500N (push)

**Self-locking force**  
4,500N

**Max. dynamic bending moment**  
200Nm

**Max. speed at max. load**  
6.6mm/s

**Max. speed at no load**  
45mm/s

**Retracted length**  
 $\geq \text{Stroke} + 147\text{mm}$



## TL18AC - Page 42

**Max. load**  
4,500N (push)

**Self-locking force**  
4,500N

**Max. dynamic bending moment**  
250Nm

**Max. speed at max. load**  
6.6mm/s

**Max. speed at no load**  
45mm/s

**Retracted length**  
 $\geq 383\text{mm}$



# TGM

series

TiMOTION's TGM (Gear Motor) series is primarily designed for height-adjustable table applications. The TGM products allow for fast, smooth and quiet adjustments of built-in spindles through the use of external limit switches. Shafting allows for the mechanical synchronization of dual spindles.



**TGM1** - Page 44

**Max. rated torque**  
7.4Nm

**Max. speed at max. load**  
72RPM ( $\pm 5\%$ )

**Max. speed at no load**  
262.5RPM ( $\pm 5\%$ )

**Options**  
Hall sensors



**TGM2** - Page 46

**Max. rated torque**  
18.3Nm

**Max. speed at max. load**  
51RPM ( $\pm 5\%$ )

**Max. speed at no load**  
108RPM ( $\pm 5\%$ )

**Options**  
Hall sensors



**TGM3** - Page 48

**Max. rated torque**  
4.6Nm

**Max. speed at max. load**  
61RPM ( $\pm 5\%$ )

**Max. speed at no load**  
259RPM ( $\pm 5\%$ )

**Options**  
Hall sensors



**TGM4** - Page 50

**Max. rated torque**  
6Nm

**Max. speed at max. load**  
98RPM ( $\pm 5\%$ )

**Max. speed at no load**  
219RPM ( $\pm 5\%$ )

**Options**  
Hall sensors



**TGM7** - Page 52

**Max. rated torque**  
7.2Nm

**Max. speed at max. load**  
78RPM ( $\pm 5\%$ )

**Max. speed at no load**  
355RPM ( $\pm 5\%$ )

**Options**  
Hall sensors

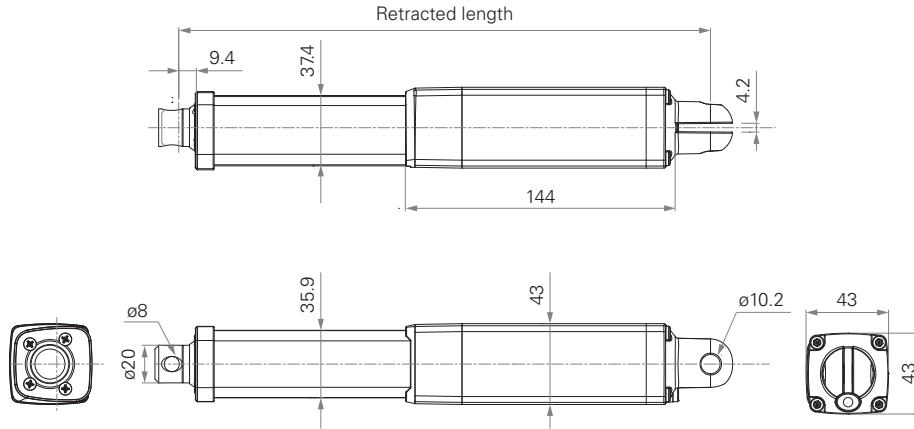
# JP3

series



## Standard Dimension

(mm)



## General Features

<b>Max. load</b>	2,000N (push/pull)	<b>Voltage</b>	12/24V DC; 12/24V DC (PTC)
<b>Max. speed at max. load</b>	3.5mm/s	<b>Color</b>	Black or grey
<b>Max. speed at no load</b>	23.5mm/s	<b>Operational temperature range</b>	-5°C~+65°C
<b>Retracted length</b>	≥ Stroke + 217mm	<b>Operational temperature range at full performance</b>	+5°C~+45°C
<b>IP rating</b>	IP69K	<b>Storage temperature range</b>	-40°C~+70°C
<b>Certificate</b>	UL73		
<b>Stroke</b>	20~1000mm		An inline actuator designed for small spaces

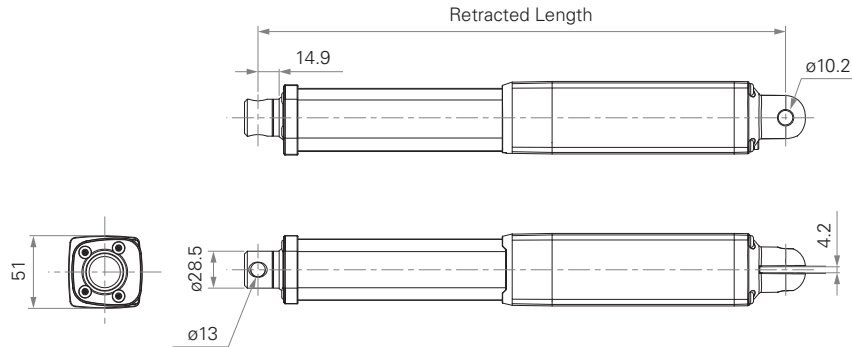
# JP4

series



## Standard Dimension

(mm)



## General Features

**Max. load** 4,500N (push); 3,000N (pull)

**Max. speed at max. load** 2.5mm/s

**Max. speed at no load** 27.5mm/s

**Retracted length**  $\geq$  Stroke + 289mm

**IP rating** IP69K

**Certificate** UL73

**Stroke** 20~1000mm

**Voltage** 12/24V DC; 12/24V DC (PTC)

**Color** Black or grey

**Operational temperature range** -5°C~+65°C

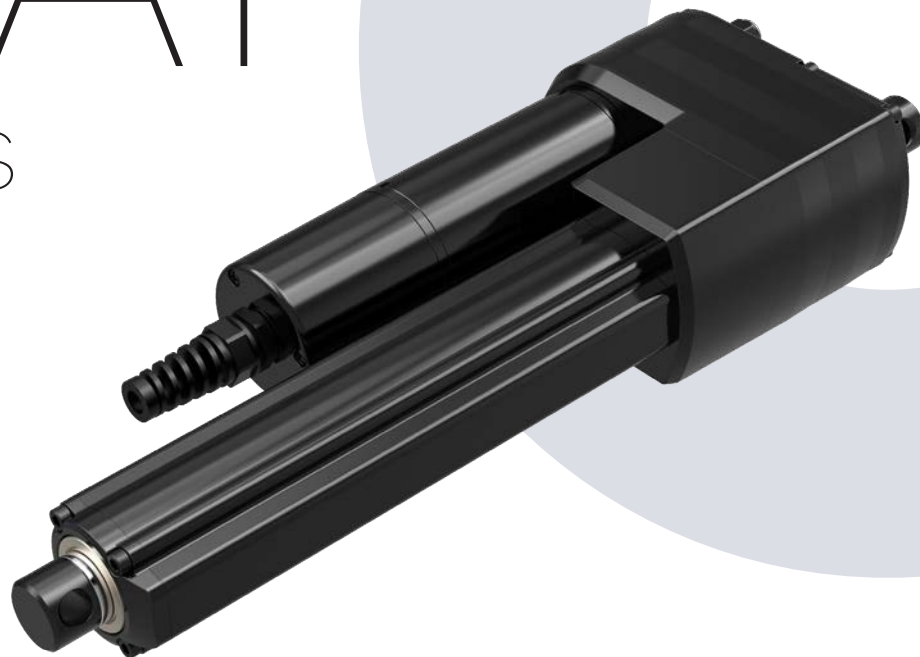
**Operational temperature range at full performance** +5°C~+45°C

**Storage temperature range** -40°C~+70°C

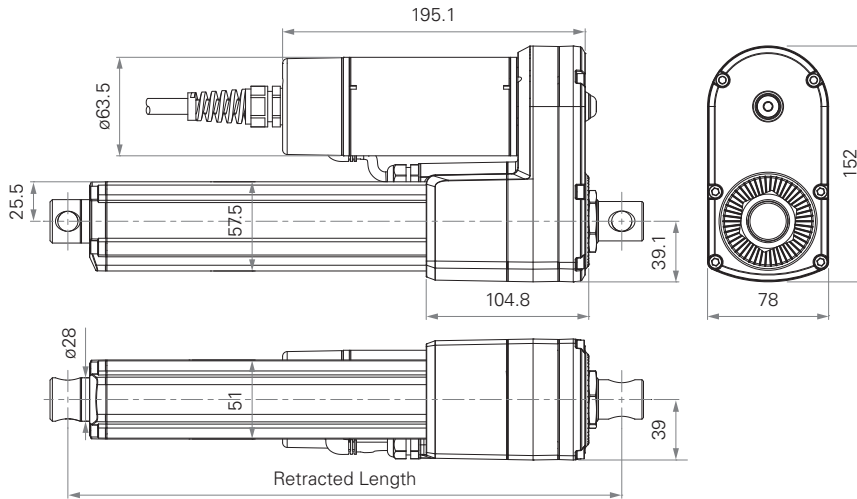
An inline actuator designed for small spaces

# MA1

series



## Standard Dimension (mm)

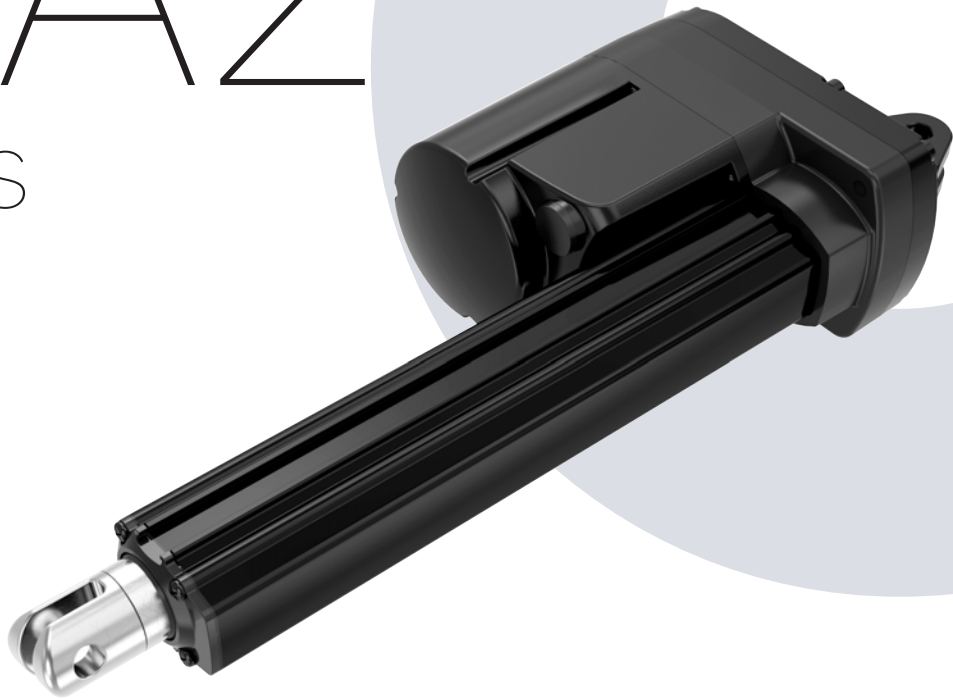


## General Features

<b>Max. load</b>	ACME screw: 2,500N (push/pull) Ball screw: 4,500N (push/pull)	<b>Options</b>	Overload clutch, electromagnetic brake, Hall sensors, POT, manual crank function
<b>Max. speed at max. load</b>	14.3mm/s (ACME screw, DC motor) 14mm/s (Ball screw, DC motor)	<b>Voltage</b>	12/24/36V DC; 110/220V AC
<b>Max. speed at no load</b>	58.5mm/s (Ball screw, DC motor)	<b>Spindle</b>	ACME or Ball screw
<b>Retracted length</b>	≥ Stroke + 160mm (ACME screw, without POT) ≥ Stroke + 201mm (Ball screw, without POT)	<b>Color</b>	Black
<b>IP rating</b>	IP69K	<b>Operational temperature range</b>	-30°C~+65°C
<b>Certificate</b>	UL73, EMC	<b>Operational temperature range at full performance</b>	+5°C~+45°C
<b>Stroke</b>	20~1000mm (ACME screw) 50~800mm (Ball screw)		Mechanical or electromagnetic brake Higher duty cycle (25%), corrosion proof

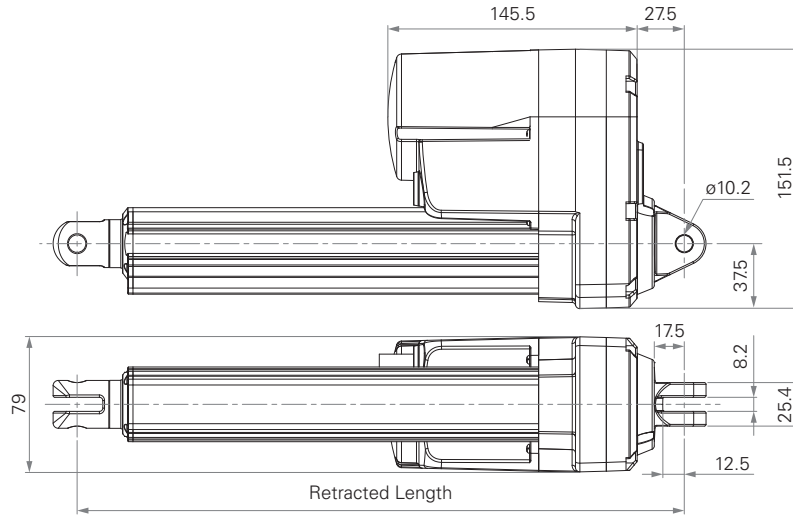
# MA2

series





## Standard Dimension (mm)

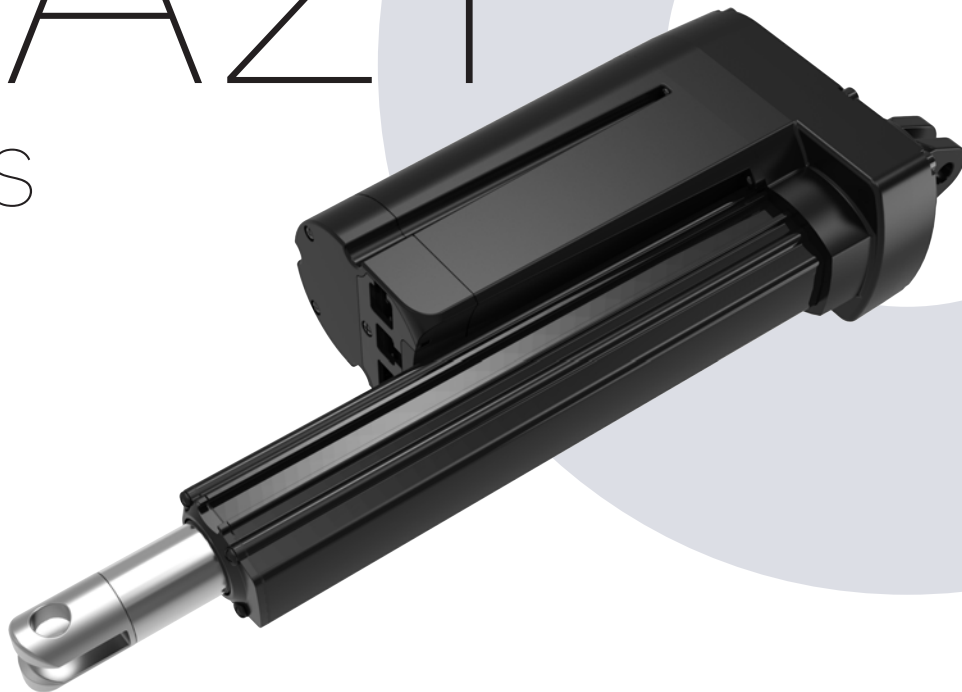


## General Features

<b>Max. load</b>	8,000N (push/pull)	<b>Options</b>	Hall sensors, POT, manual drive, Reed sensor on the outer tube
<b>Max. speed at max. load</b>	5.4mm/s	<b>Voltage</b>	12/24/36V DC; 12/24/36V DC (thermal control)
<b>Max. speed at no load</b>	52.5mm/s	<b>Operational temperature range</b>	-30°C~+65°C
<b>Retracted length</b>	≥ Stroke + 131mm	<b>Operational temperature range at full performance</b>	+5°C~+45°C
<b>IP rating</b>	IP69K		
<b>Certificate</b>	UL73, EMC		
<b>Stroke</b>	25~1000mm		

# MA2T

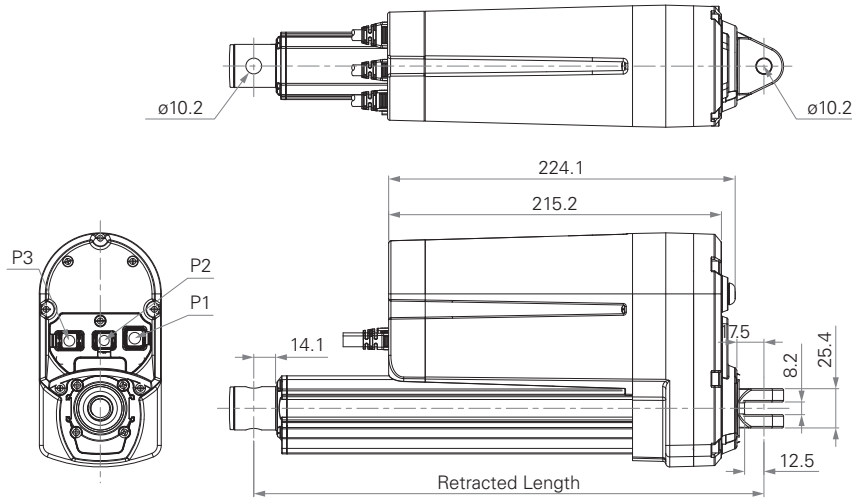
series



NEW

## Standard Dimension

(mm)



## General Features

<b>Max. load</b>	8,000N (push/pull)
<b>Max. speed at max. load</b>	5.4mm/s
<b>Max. speed at no load</b>	52.5mm/s
<b>Retracted length</b>	≥ Stroke + 131mm
<b>IP rating</b>	IP69K
<b>Stroke</b>	25~1000mm

## Options

Hall sensors, manual drive,  
Reed sensor on the outer  
tube, T-Smart, CAN bus board

## Voltage

12/24 V DC

## Operational temperature range

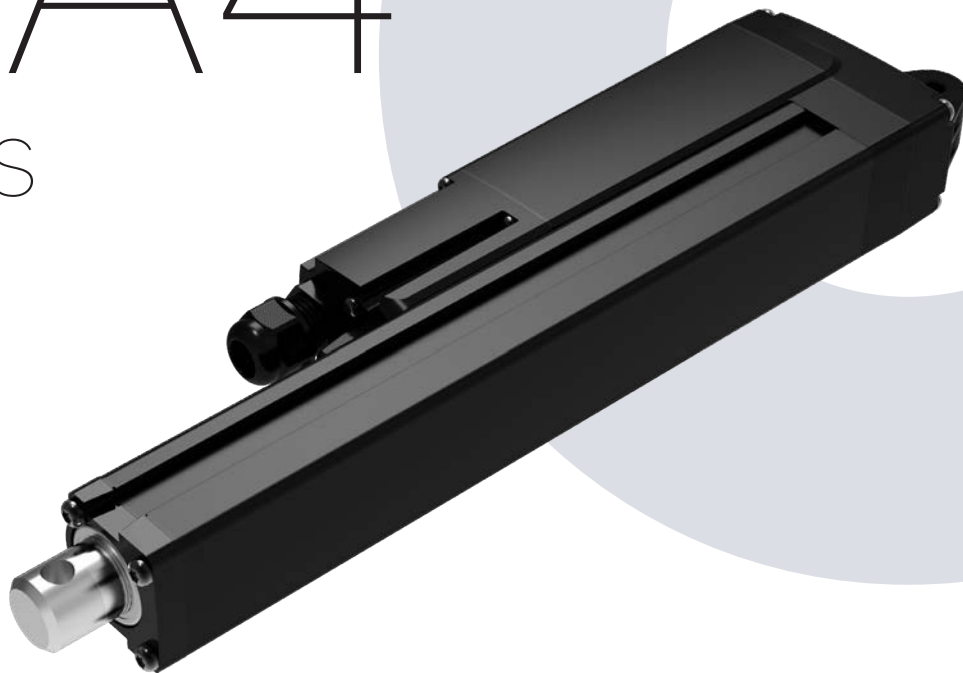
-40°C~+85°C

## Operational temperature range at full performance

+5°C~+45°C

# MMA4

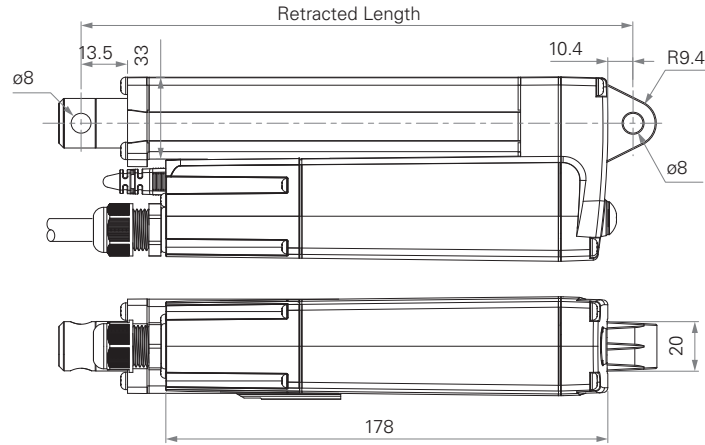
series



NEW

## Standard Dimension

(mm)

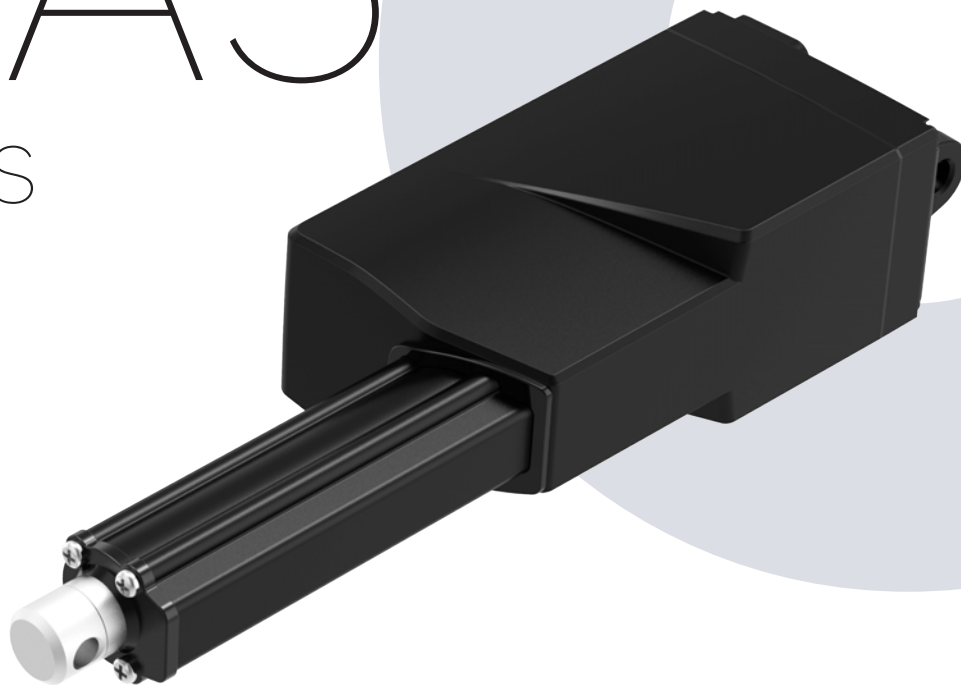


## General Features

<b>Max. load</b>	3,500N (push); 2,000N (pull)	<b>Options</b>	Adjustable reed switch, mechanical POT, Hall sensor(s), CAN bus interface
<b>Max. speed at max. load</b>	1.8mm/s	<b>Voltage</b>	12/24V DC; 12/24V DC (thermal control)
<b>Max. speed at no load</b>	43mm/s	<b>Operational temperature range</b>	-40°C~+85°C
<b>Retracted length</b>	$\geq$ Stroke + 106mm (min. retracted length has to be greater than 213mm)	<b>Operational temperature range at full performance</b>	+5°C~+45°C
<b>IP rating</b>	IP69K		
<b>Stroke</b>	20~1000mm		

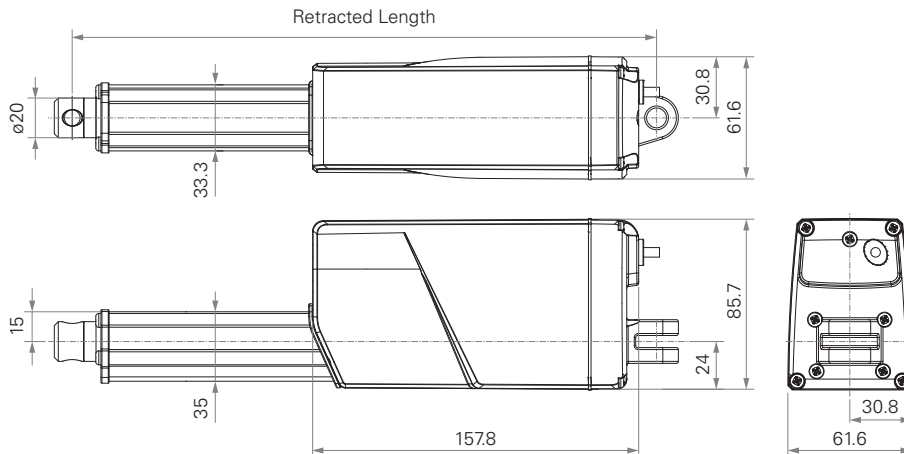
# MMA5

series



## Standard Dimension

(mm)



## General Features

<b>Max. load</b>	3,500N (push); 2,000N (pull)	<b>Stroke</b>	20~1000mm
<b>Max. speed at max. load</b>	2.4mm/s	<b>Options</b>	Hall sensors, POT, grease chamber
<b>Max. speed at no load</b>	56.5mm/s	<b>Operational temperature range</b>	-25°C~+65°C
<b>Retracted length</b>	$\geq 200$ mm (depending on chosen fixation type)	<b>Operational temperature range at full performance</b>	+5°C~+45°C
<b>IP rating</b>	IP69K		

# TA2

series

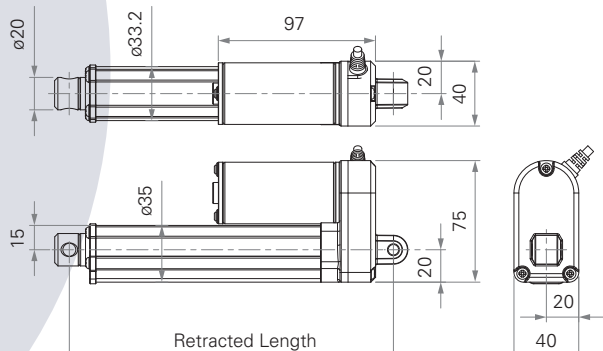




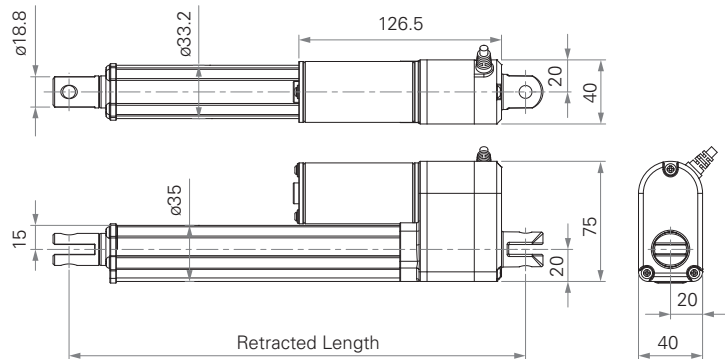
## Standard Dimension

(mm)

Without Output Signal



With Output Signal



## General Features

<b>Max. load</b>	1,000N (push/pull)
<b>Max. speed at max. load</b>	7.6mm/s
<b>Max. speed at no load</b>	67.5mm/s
<b>Retracted length</b>	≥ Stroke + 105mm (without output signals)
<b>IP rating</b>	IP66D
<b>Certificate</b>	IEC60601-1, ES60601-1, EMC
<b>Stroke</b>	20~1000mm

<b>Options</b>	POT, Reed, Hall sensors
<b>Voltage</b>	12/24/36/48V DC; 12/24/36/48V DC (PTC)
<b>Color</b>	Silver
<b>Operational temperature range</b>	+5°C~+45°C (Load < 500N); -25°C~+65°C (Load ≥ 500N)
<b>Operational temperature range at full performance</b>	+5°C~+45°C

Compact size for limited space

# TA2P

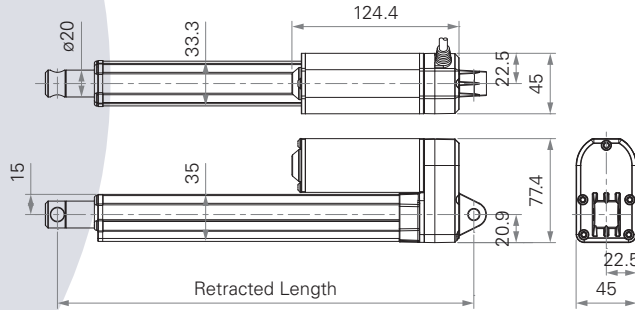
series



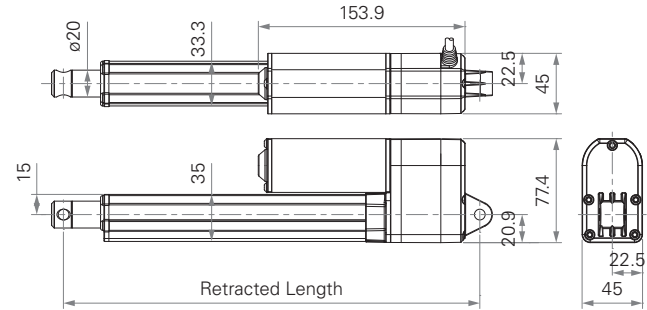
## Standard Dimension

(mm)

Without Output Signal



With Output Signal



## General Features

<b>Max. load</b>	3,500N (push); 2,000N (pull)
<b>Max. speed at max. load</b>	2.4mm/s
<b>Max. speed at no load</b>	56.5mm/s
<b>Retracted length</b>	≥ Stroke + 108mm (with Hall sensors or without output signals)
<b>IP rating</b>	IP66D
<b>Certificate</b>	IEC60601-1, ES60601-1, EN 61000-6-1, EN 61000-6-3, UL73

<b>Stroke</b>	20~1000mm
<b>Options</b>	POT, Reed or Hall sensors
<b>Voltage</b>	12/24/36V DC; 12/24V DC (PTC)
<b>Color</b>	Silver
<b>Operational temperature range</b>	-25°C~+65°C
<b>Operational temperature range at full performance</b>	+5°C~+45°C

# TA16

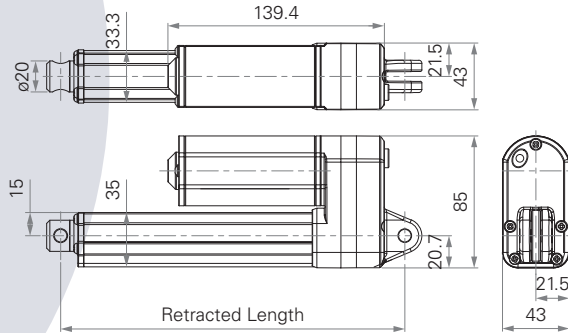
series



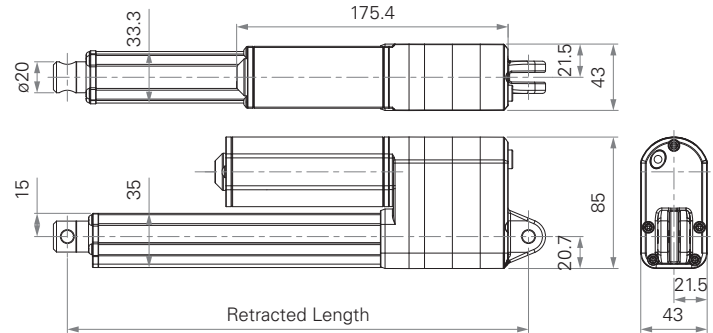
## Standard Dimension

(mm)

Without Output Signal or with Hall Sensors



With POT



## General Features

<b>Max. load</b>	3,500N (push/pull)
<b>Max. speed at max. load</b>	6.2mm/s
<b>Max. speed at no load</b>	23.5mm/s
<b>Retracted length</b>	≥ Stroke + 112mm
<b>IP rating</b>	IP66
<b>Certificate</b>	IEC60601-1, ES60601-1, IEC60601-1-2, UL962, EMC

<b>Stroke</b>	20~600mm
<b>Options</b>	POT, Hall sensor(s)
<b>Voltage</b>	12/24/36/48V DC
<b>Color</b>	Silver
<b>Operational temperature range at full performance</b>	+5°C~+45°C

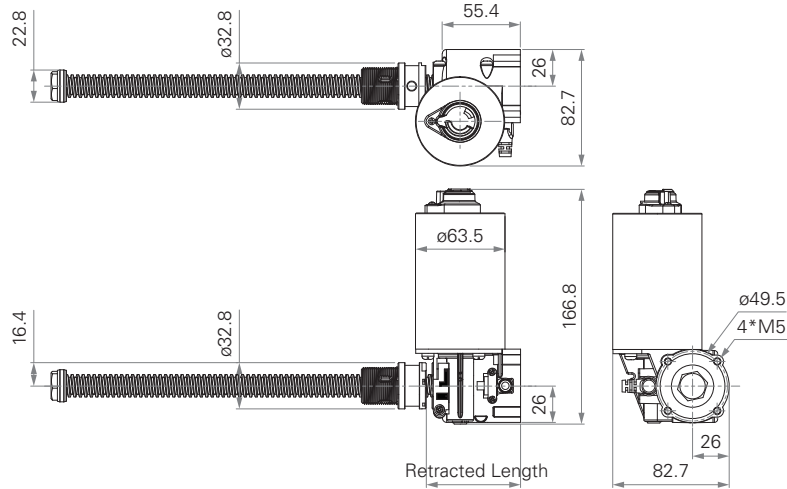
With very low noise, small size for easy installation

# TA21

series



## Standard Dimension (mm)



## General Features

<b>Max. load</b>	10,000N (push); 6,000N (pull)	<b>Stroke</b>	25~400mm
<b>Max. speed at max. load</b>	6.3mm/s	<b>Options</b>	Hall sensors, Reed sensor
<b>Max. speed at no load</b>	24.7mm/s	<b>Voltage</b>	24V DC; 24V DC (UL)
<b>Retracted length</b>	≥ 67mm	<b>Color</b>	Black or grey
<b>Certificate</b>	UL962		High design flexibility

# TA38

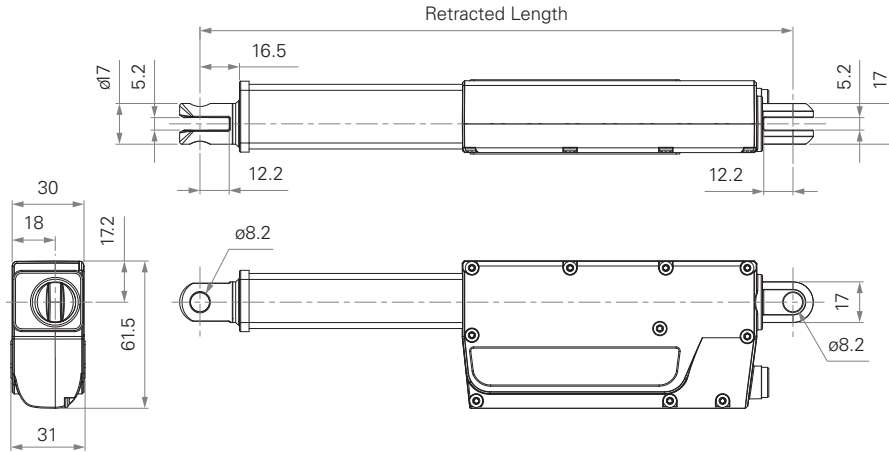
series





## Standard Dimension

(mm)

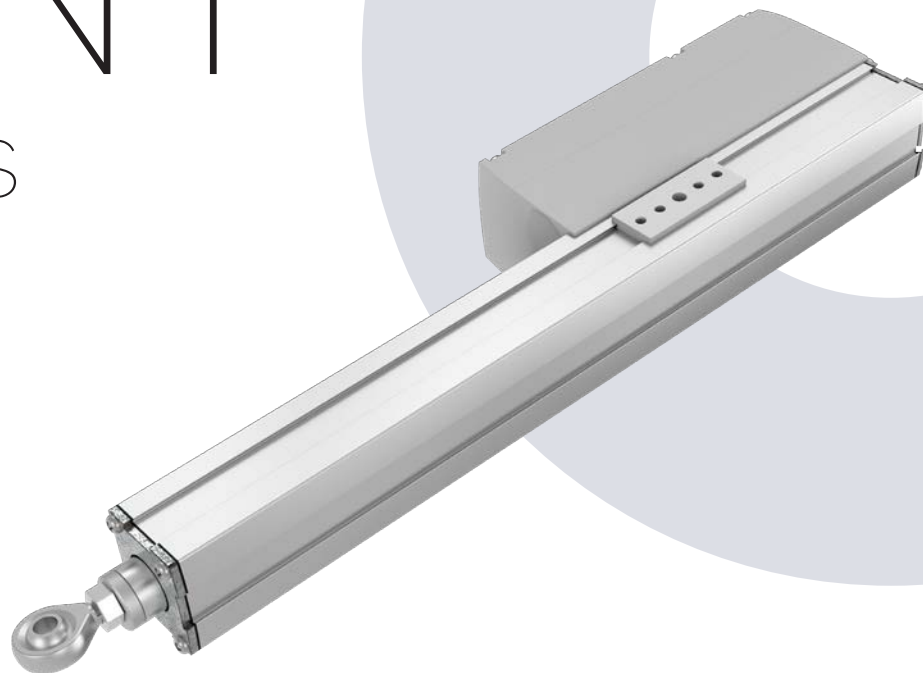


## General Features

<b>Max. load</b>	1,500N (push/pull)	<b>Stroke</b>	20~200mm
<b>Max. speed at max. load</b>	9mm/s	<b>Options</b>	Hall sensors
<b>Max. speed at no load</b>	15.7mm/s	<b>Voltage</b>	24V DC; 12/24V DC (PTC)
<b>Retracted length</b>	≥ 160mm	<b>Color</b>	Black or grey
<b>IP rating</b>	IP66	<b>Operational temperature range</b>	+5°C~+45°C

# VN1

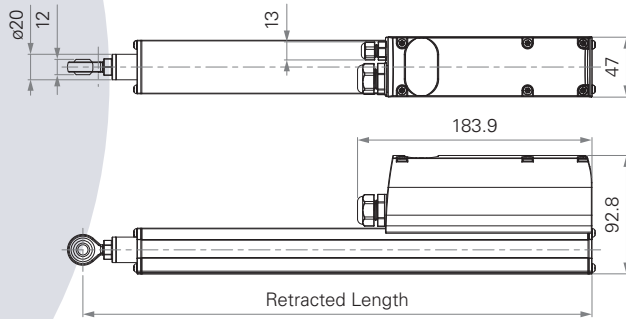
series



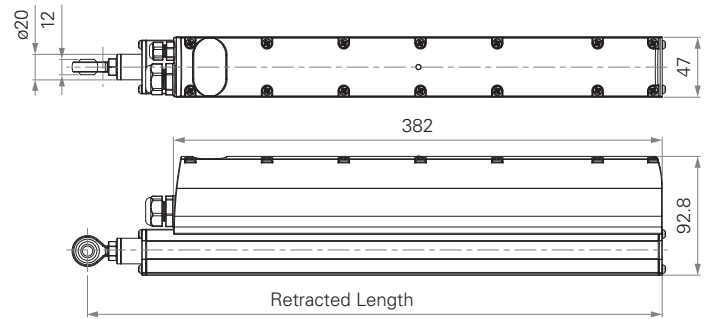
## Standard Dimension

(mm)

With DC Voltage



With AC Voltage



## General Features

<b>Max. load</b>	3,500N (push/pull)
<b>Max. speed at max. load</b>	4.2mm/s
<b>Max. speed at no load</b>	10.4mm/s
<b>Retracted length</b>	≥ 181mm (DC version, w/o T-Smart) ≥ 401mm (AC version) * With front attachment #1, 2, or 3 * Required outer tube adjustable attachment
<b>IP rating</b>	IP66

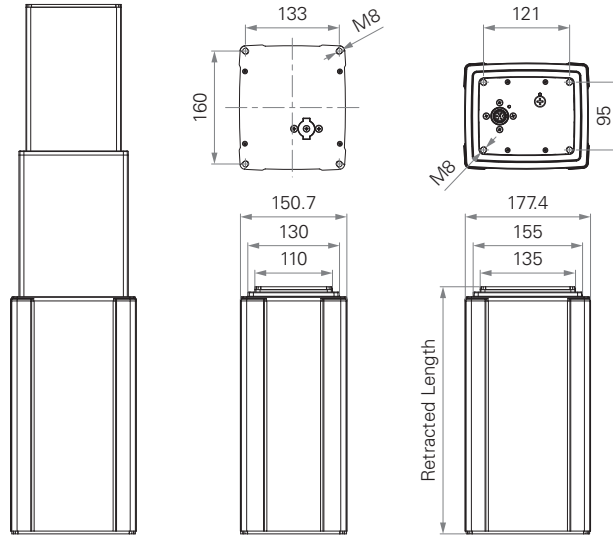
<b>Stroke</b>	20~500mm
<b>Options</b>	Hall sensors, safety nut, window seal mechanism
<b>Voltage</b>	12/24V DC; 100~240V AC (50Hz)
<b>Color</b>	Black, grey
<b>Operational temperature range</b>	-15°C~+50°C
<b>Operational temperature range at full performance</b>	+5°C~+45°C

# TL3

series



## Standard Dimension (mm)



## General Features

<b>Max. load</b>	4,000N (push)	<b>IP rating</b>	IPX6
<b>Self-locking force</b>	4,000N	<b>Dimension of outer tube</b>	3-stage, 177.4*150.7mm rectangular
<b>Max. dynamic bending moment</b>	1,000Nm	<b>Stroke</b>	250~1200mm
<b>Max. static bending moment</b>	2,000Nm	<b>Certificate</b>	IEC60601-1, EMC
<b>Max. speed at max. load</b>	13.7mm/s	<b>Options</b>	POT, Hall sensors, direct cut system
<b>Max. speed at no load</b>	39mm/s	<b>Operational temperature range</b>	+5°C~+45°C
<b>Retracted length</b>	≥ Stroke/2 + 150mm		

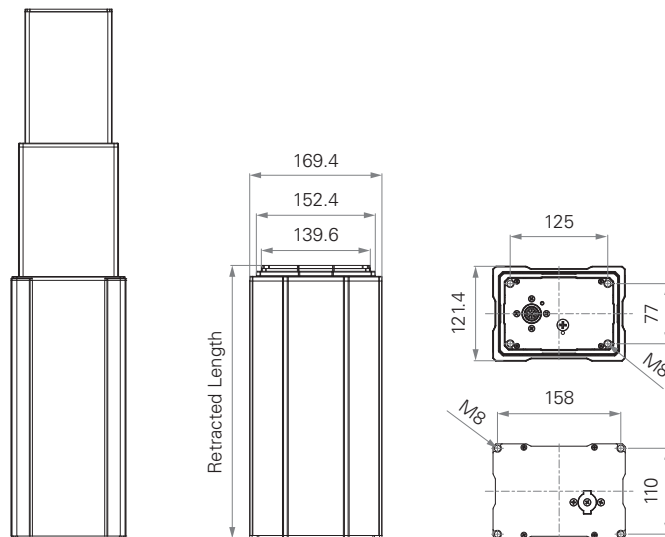
# TL17

series



## Standard Dimension

(mm)



## General Features

<b>Max. load</b>	2,000N (push)
<b>Max. dynamic bending moment</b>	250Nm
<b>Max. static bending moment</b>	500Nm
<b>Max. speed at max. load</b>	11.5mm/s
<b>Max. speed at no load</b>	41mm/s
<b>Retracted length</b>	≥ Stroke/2 + 150mm
<b>IP rating</b>	IPX6

<b>Dimension of outer tube</b>	3-stage, 169.4*121.4mm rectangular
<b>Stroke</b>	250~1200mm
<b>Certificate</b>	IEC60601-1, ES60601-1, IEC60601-1-2
<b>Options</b>	Hall sensor(s)
<b>Color</b>	Silver, black
<b>Operational temperature range</b>	+5°C~+45°C

# TL18

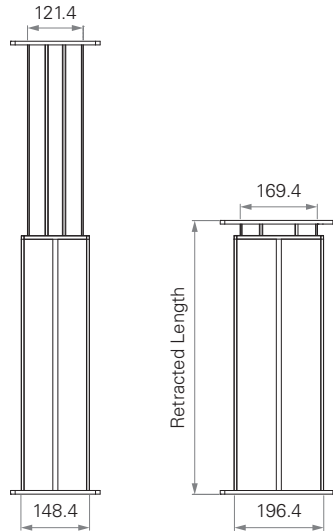
series





## Standard Dimension

(mm)



## General Features

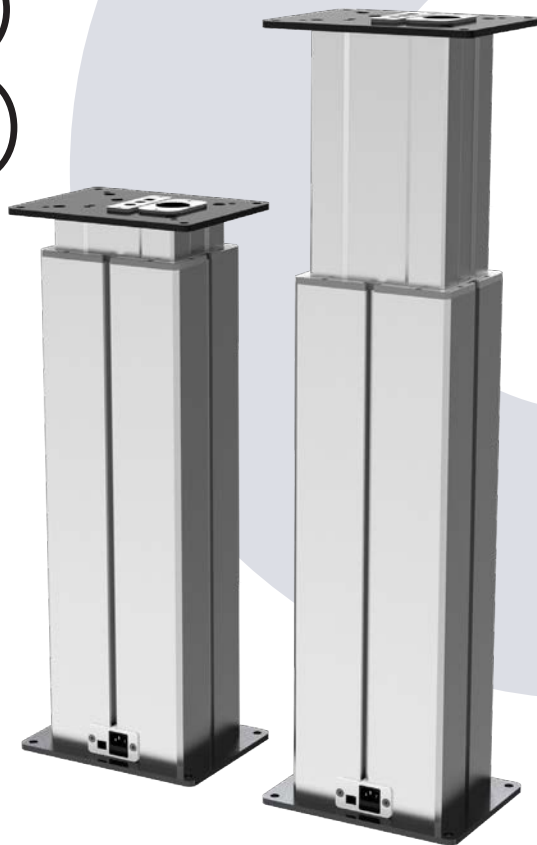
<b>Max. load</b>	4,500N (push)
<b>Self-locking force</b>	4,500N
<b>Max. dynamic bending moment</b>	200Nm
<b>Max. static bending moment</b>	400Nm
<b>Max. speed at max. load</b>	6.6mm/s
<b>Max. speed at no load</b>	45mm/s
<b>Retracted length</b>	≥ Stroke + 147mm

<b>Dimension of outer tube</b>	2-stage, 196.4*148.4mm rectangular
<b>Stroke</b>	100~700mm
<b>Certificate</b>	IEC60601-1, ES60601-1, IEC60601-1-2, UL73, EMC
<b>Options</b>	Hall sensor(s), cable exit from top or bottom side, direct cut system
<b>Operational temperature range</b>	+5°C~+45°C

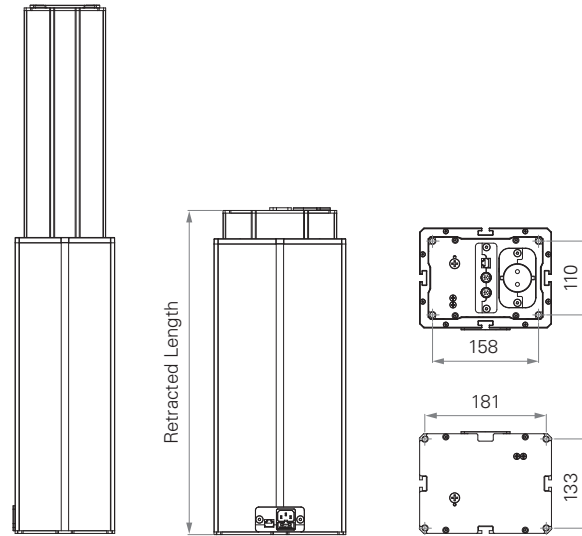
# TL18

# AC

series



## Standard Dimension (mm)

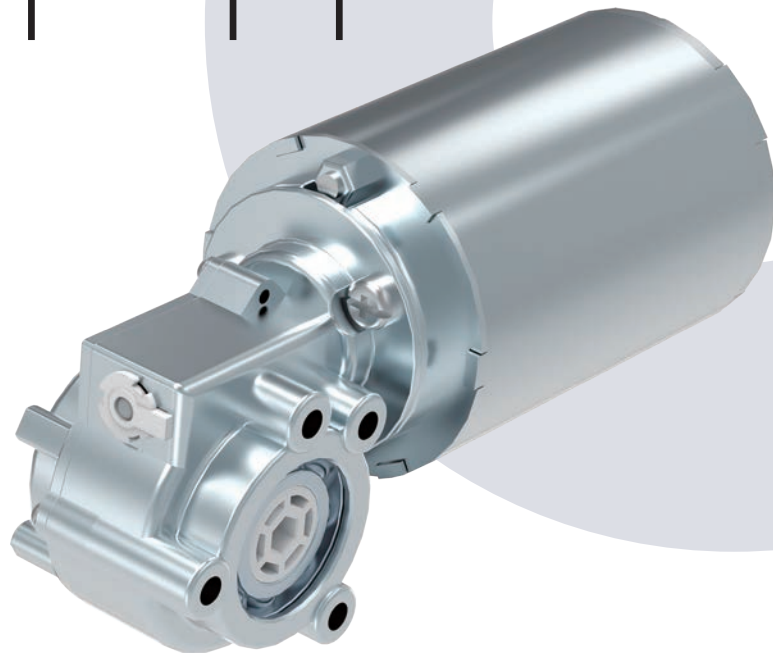


## General Features

<b>Max. load</b>	4,500N (push)	<b>Retracted length</b>	≥ 383mm
<b>Self-locking force</b>	4,500N	<b>Dimension of outer tube</b>	2-stage, 196.4*148.4mm rectangular
<b>Max. dynamic bending moment</b>	250Nm	<b>Stroke</b>	200~700mm
<b>Max. static bending moment</b>	500Nm	<b>Options</b>	AC cable exit from top end, top side; Ethernet socket
<b>Max. speed at max. load</b>	6.6mm/s	<b>Operational temperature range</b>	+5°C~+45°C
<b>Max. speed at no load</b>	45mm/s		

# TGM1

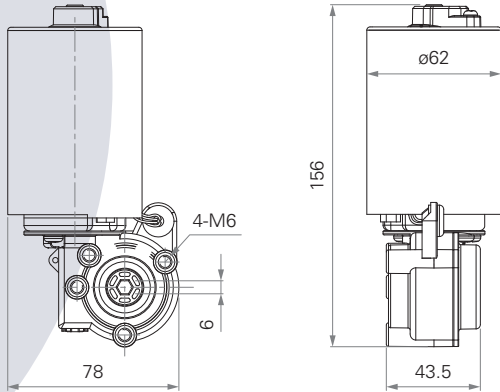
series



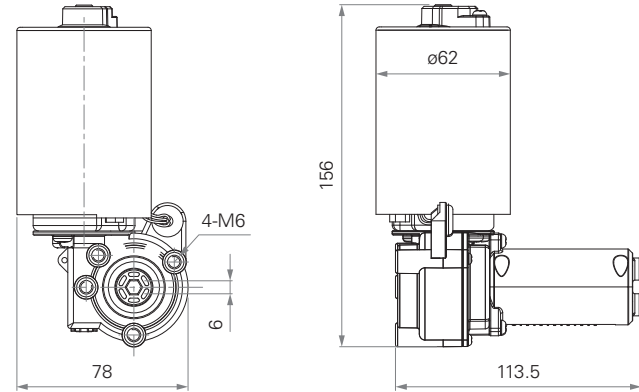
## Standard Dimension

(mm)

Without TES2



With TES2



## General Features

**Max. rated torque**

7.4Nm

**Max. speed at max. load**

72RPM ( $\pm 5\%$ )

**Max. speed at no load**

262.5RPM ( $\pm 5\%$ )

**Certificate**

UL962

**Options**

Hall sensors

**Voltage**

12, 24V DC or 24V DC (PTC)

**Operational temperature range at full performance**

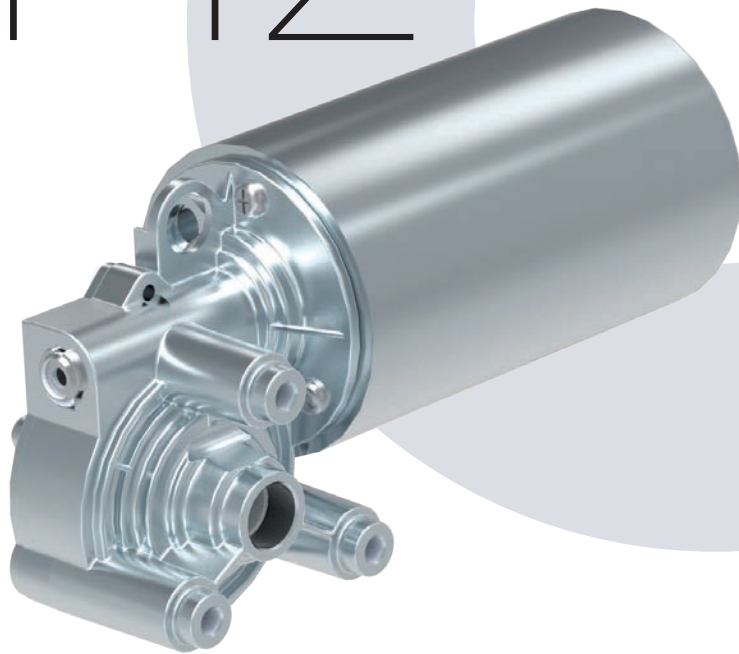
+5°C~+45°C

Hexagon hole for the shaft by 6 or 9.1mm diameter

Low noise

# TGM2

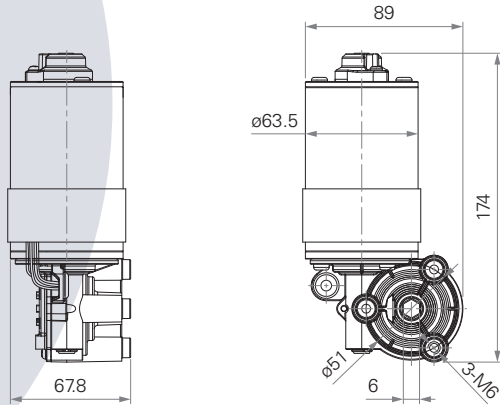
series



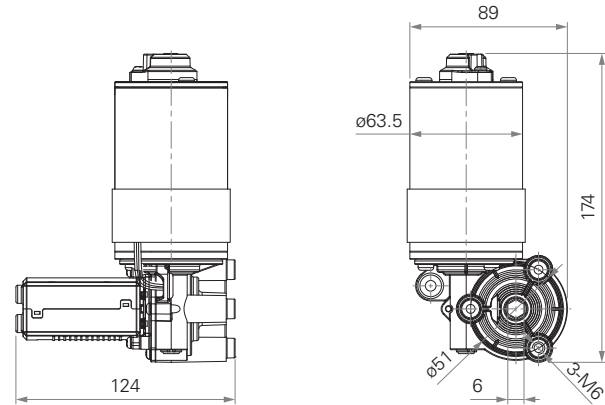
## Standard Dimension

(mm)

Without TES2



With TES2



## General Features

<b>Max. rated torque</b>	18.3Nm
<b>Max. speed at max. load</b>	51RPM ( $\pm 5\%$ )
<b>Max. speed at no load</b>	108RPM ( $\pm 5\%$ )

## Options

### Voltage

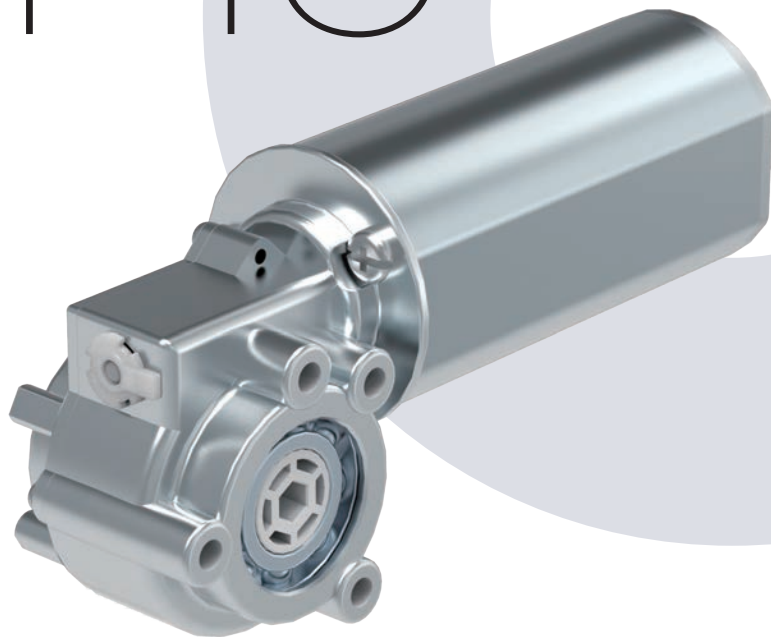
Low noise

Hall sensors

12V DC or 24V DC  
(thermal protector)

# TGM3

series

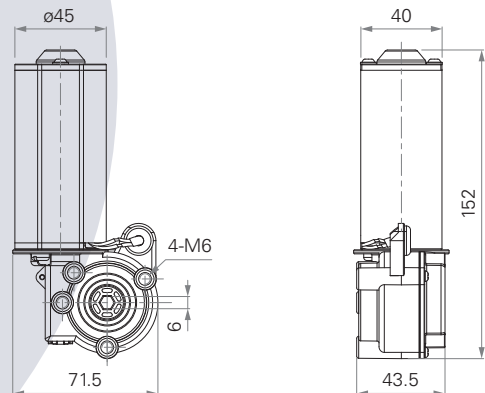




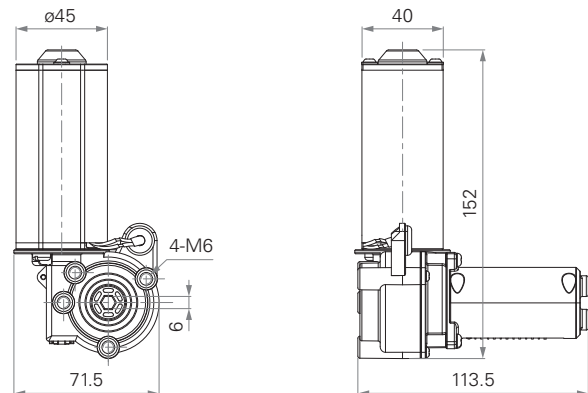
## Standard Dimension

(mm)

Without TES2



With TES2



## General Features

<b>Max. rated torque</b>	4.6Nm
<b>Max. speed at max. load</b>	61RPM (±5%)
<b>Max. speed at no load</b>	259RPM (±5%)
<b>Options</b>	Hall sensors

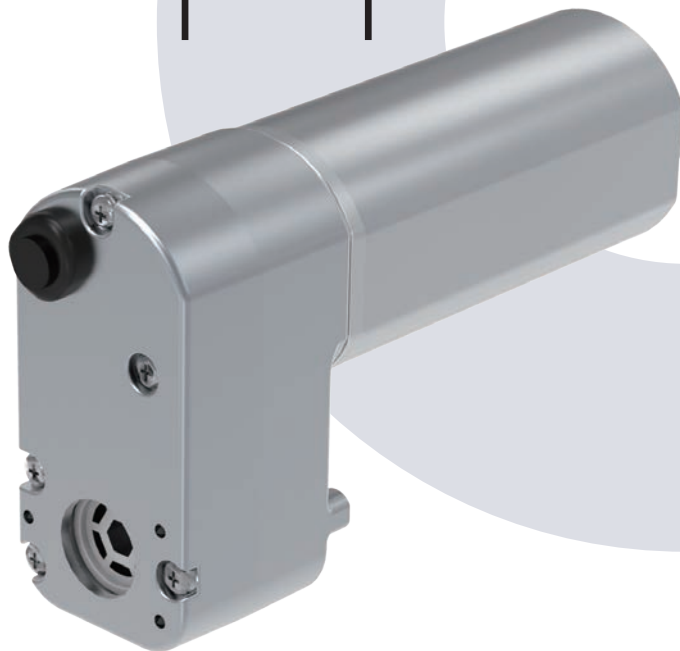
<b>Voltage</b>	24V DC
<b>Operational temperature range at full performance</b>	+5°C~+45°C

Hexagon hole for the shaft by 6mm diameter

Low noise

# TGM4

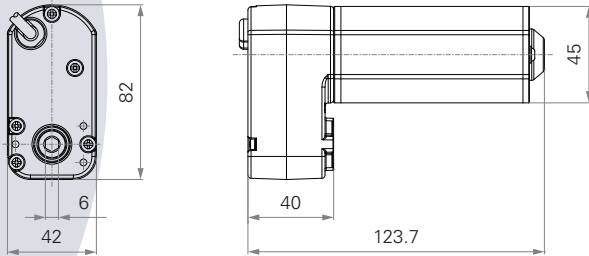
series



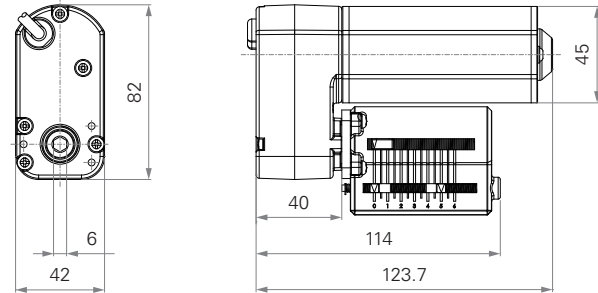
## Standard Dimension

(mm)

Without TES2



With TES2



## General Features

<b>Max. rated torque</b>	6Nm
<b>Max. speed at max. load</b>	98RPM ( $\pm 5\%$ )
<b>Max. speed at no load</b>	219RPM ( $\pm 5\%$ )
<b>Options</b>	Hall sensors

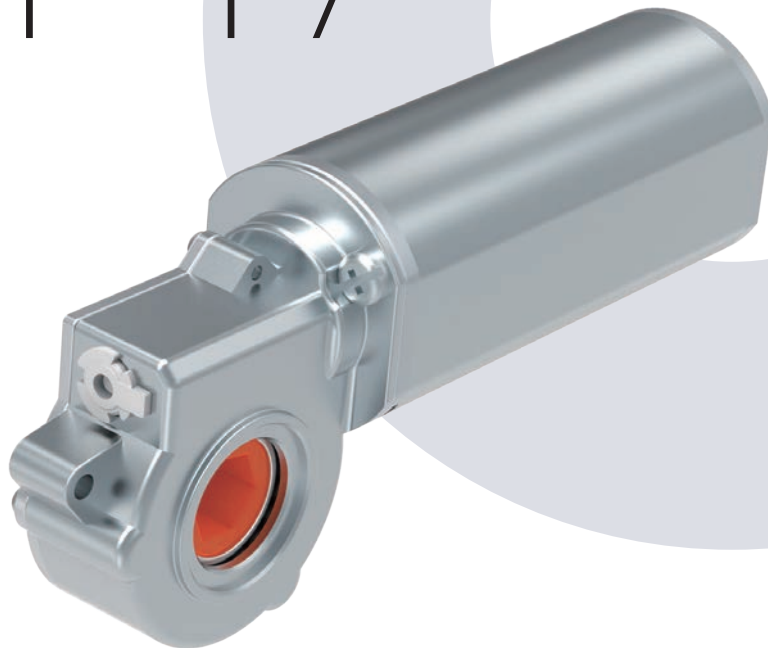
<b>Voltage</b>	24V DC
<b>Operational temperature range at full performance</b>	+5°C~+45°C

Hexagon hole for the shaft by 9mm diameter

Low noise

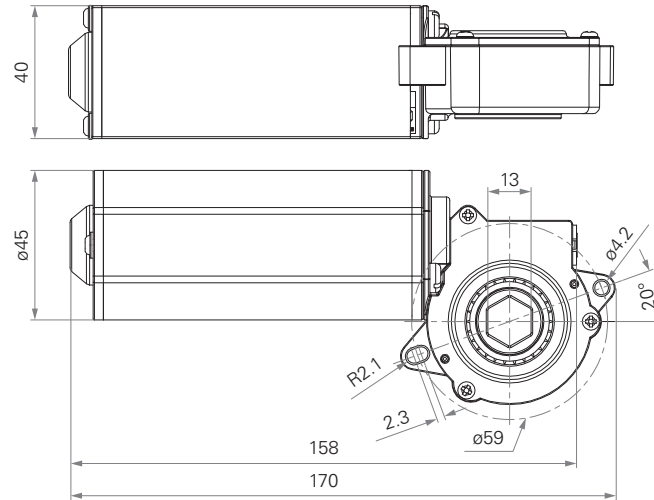
# TGM7

series



## Standard Dimension

(mm)



## General Features

**Max. rated torque**

7.2Nm

**Max. speed at max. load**

78RPM (±5%)

**Max. speed at no load**

355RPM (±5%)

**Options**

Hall sensors

**Voltage**

24V DC

**Operational temperature range at full performance**

+5°C~+45°C

Low noise

## Terms of Use

The user is responsible for determining the suitability of TiMOTION products for a specific application. TiMOTION takes great care in providing accurate and up-to-date information on its products. However, due to continuous development, frequent modifications and changes to products may occur without prior notice. It is for this reason that TiMOTION cannot guarantee the correct and actual status of said information on its products, nor can it guarantee the availability of any particular product.

Therefore, TiMOTION reserves the right to discontinue the sale of any product displayed on its website or listed in its catalogues or other written material produced by TiMOTION.

For the most accurate and up-to-date information on our products, please visit TiMOTION's website.

[www.timotion.com](http://www.timotion.com)



### Every Day is Earth Day

TiMOTION uses FSC certificated paper in order to help care for our forests, as well as the people and wildlife who call them home.





**Taiwan & China**

sales.tw@timotion.com  
tel 886 2 2219 6633

**Japan**

sales.jp@timotion.com  
tel 81 6 6713 1188

**Korea**

sales@timotion.co.kr  
tel 82 31 745 1060

**Australia**

sales.tw@timotion.com  
tel 61 3 8725 0331

**Europe**

sales.eu@timotion.com  
tel 33 (0)1 74 82 50 51

**USA**

sales.us@timotion.com  
tel (855)235 1424

**Latin America**

sales.la@timotion.com  
tel 55 (11) 5081 5011



For the latest  
product information

**Updated: Jun 2021**