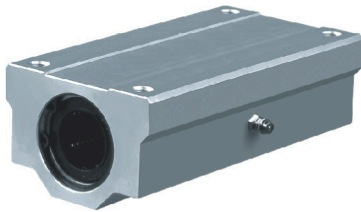
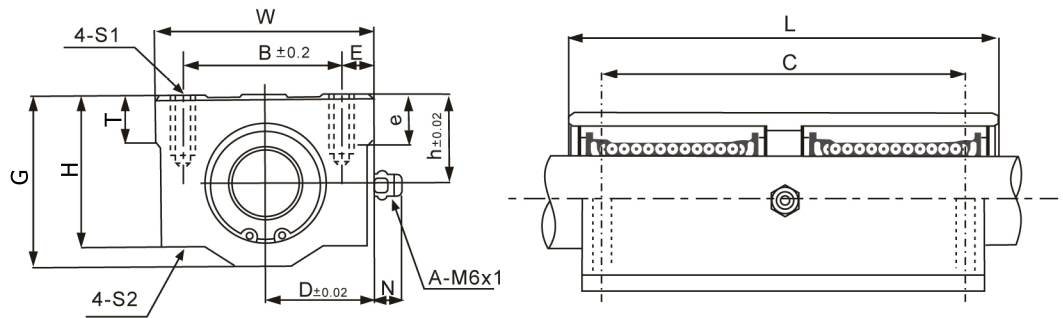


# Slide unit SC L Series

(SMA W Type)



SC L

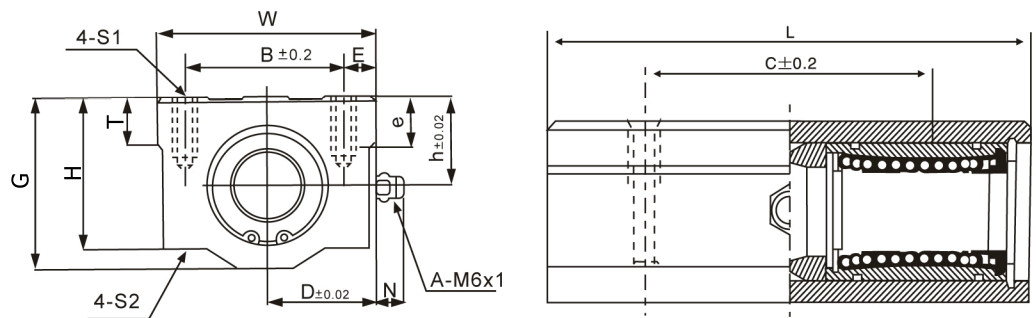


Part No.	Main dimensions (mm)												Basic Load Rating		Weight (g)	
	h	D	W	G	H	N	T	B	E	S1xe	S2	C	L	C N		Co N
SC8LUU	11	17	34	22	18	7	6	24	5	M4x8	3.4	42	58	431	784	102
SC10LUU	13	20	40	26	21	7	8	28	6	M5X12	4.3	46	68	588	1100	180
SC12LUU	15	21	42	28	24	6.5	8	30.5	5.75	M5X12	4.3	50	70	813	1570	250
SC13LUU	15	22	44	30	24.5	6.5	8	33	5.5	M5X12	4.3	50	75	813	1570	240
SC16LUU	19	25	50	38.5	32.5	6	9	36	7	M5X12	4.3	60	85	1230	2350	400
SC20LUU	21	27	54	41	35	7	11	40	7	M6X12	5.2	70	96	1410	2740	570
SC25LUU	26	38	76	51.5	42	4	12	54	11	M8X18	7	100	130	1610	3140	1200
SC30LUU	30	39	78	59.5	49	5	15	58	10	M8X18	7	110	140	2450	5490	1480
SC35LUU	34	45	90	68	54	5.5	18	70	10	M8X18	7	120	155	2650	6270	2200
SC40LUU	40	51	102	78	62	5	20	80	11	M10X25	8.7	140	175	3430	8040	3200
SC50LUU	52	61	122	102	80	5	25	100	11	M10X25	8.7	160	215	6080	15900	6700

# Slide Unit KBA L Series



KBA L



Part No.		Main Dimensions (mm)											Weight (g)	
Seal Type	Shaft Diameter	h	D	W	L	G	H	T	B	C	E	S1 x e		S2
KBA10LUU	10	13	20	40	68	26	21	8	28	46	6	M5x12	4.3	180
KBA12LUU	12	15	22	44	77	30	24.5	8	33	64	5.5	M5x12	4.3	237
KBA16LUU	16	19	25	50	89	38.5	32.5	9	36	79	7	M5x12	4.3	405
KBA20LUU	20	21	27	54	100	41	35	11	40	90	7	M6x12	5.2	510
KBA25LUU	25	26	38	76	136	51.5	42	12	54	119	11	M8x18	7	1220
KBA30LUU	30	30	39	78	154	59.5	49	15	58	132	10	M8x18	7	1580
KBA40LUU	40	40	51	102	180	78	62	20	80	150	11	M10x25	8.7	3180
KBA50LUU	50	52	61	122	230	102	80	25	100	200	11	M10x25	8.7	6990