

Leaf Chain Diagram

Bearing Pins

Pins are manufactured from steel with a high yield-to-ultimate-tensile-strength ratio for maximum resistance to bending. Pins are heat treated to achieve an optimum surface hardness, ensuring minimum elongation of the chain due to wear.

Inner Link Plates

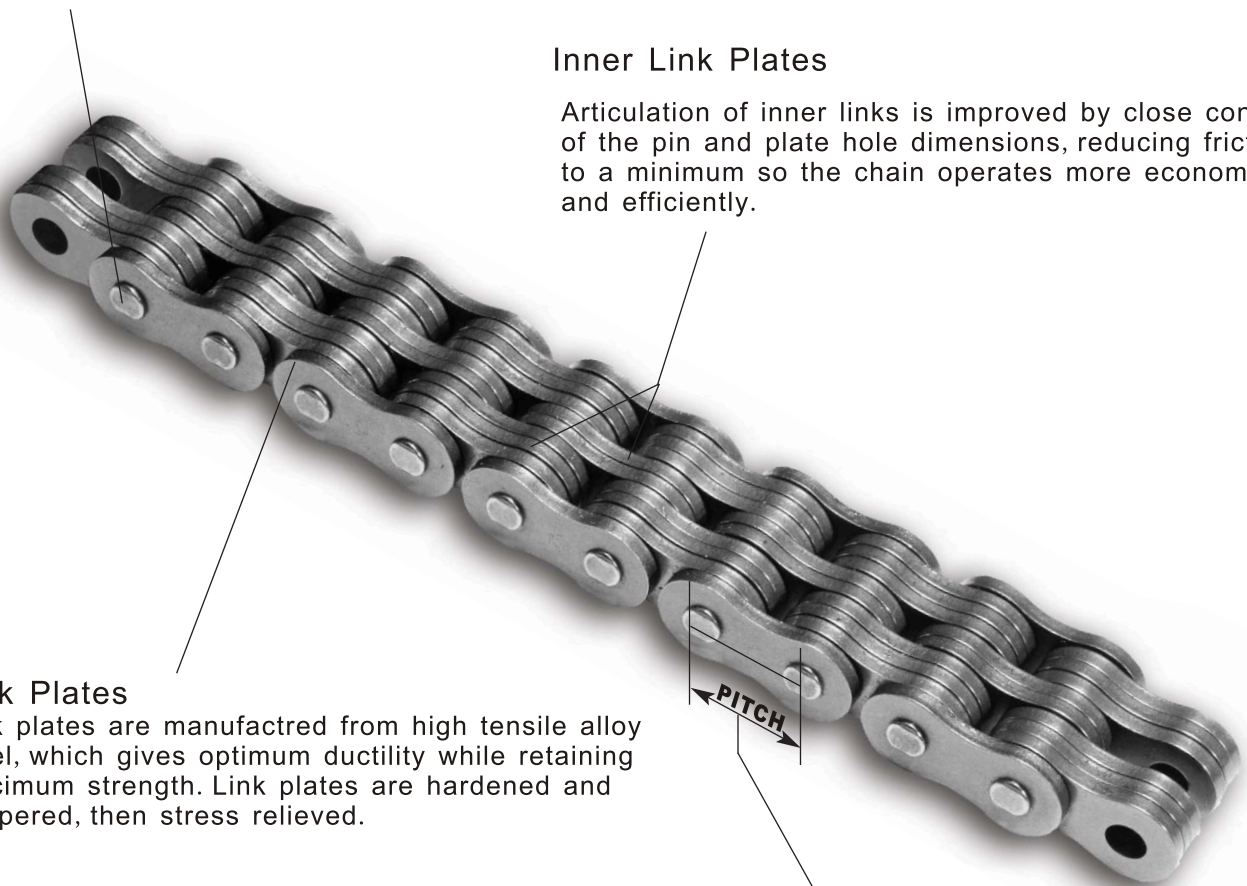
Articulation of inner links is improved by close control of the pin and plate hole dimensions, reducing friction to a minimum so the chain operates more economically and efficiently.

Link Plates

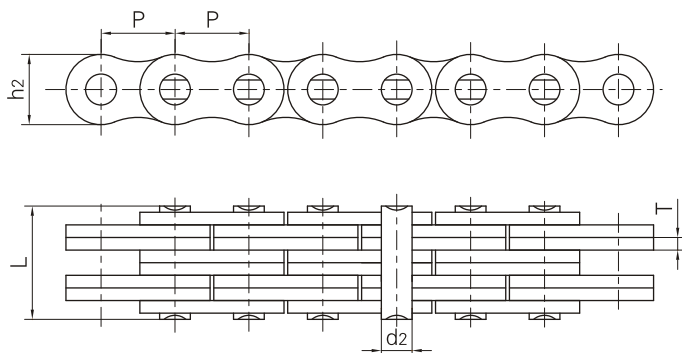
Link plates are manufactured from high tensile alloy steel, which gives optimum ductility while retaining maximum strength. Link plates are hardened and tempered, then stress relieved.

Chain Pitch

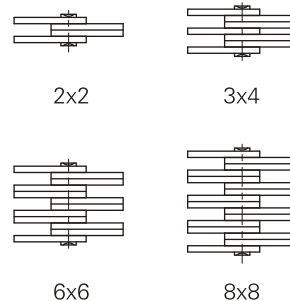
Pitch accuracy and pin hole diameters are maintained during manufacturing, offering precision performance of the chain over thousands of operations.



板式鏈
Leaf chains

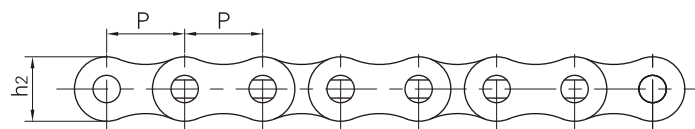


鏈板組合
Plate lacing

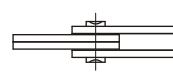


ANSI 鏈號 ANSI Chain No.	節距 Pitch	鏈板組合 Plate lacing	鏈板高度 Plate depth	鏈板厚度 Plate thickness	銷軸直徑 Pin diameter	銷軸長度 Pin length	極限拉伸載荷 Ultimate tensile strength	平均拉伸載荷 Average tensile strength	每米長重 Weight per meter
	P		h ₂ max	T max	d ₂ max	L max	Q min	Q ₀	q
	mm		mm	mm	mm	mm	kN/LB	kN	kg/m
AL322	9.525	2 X 2	7.7	1.3	3.58	6.8	9.0/2045	10.2	0.23
AL344		4 X 4				11.6	18.0/4090	20.0	0.46
AL422	12.7	2 X 2	10.4	1.5	3.96	8.3	14.1/3205	16.9	0.39
AL444		4 X 4				14.4	28.2/6409	35.2	0.74
AL466		6 X 6				20.5	42.3/9614	52.7	1.13
AL522	15.875	2 X 2	12.8	2.03	5.08	11.05	22.0/5000	27.5	0.64
AL534		3 X 4				17.0	33.0/7500	46.0	1.10
AL544		4 X 4				19.4	44.0/10000	55.0	1.25
AL566		6 X 6				27.5	66.0/15000	82.5	1.79
AL622	19.05	2 X 2	15.6	2.42	5.94	13.0	37.0/8409	44.4	0.86
AL644		4 X 4				22.7	63.7/14450	78.8	1.76
AL666		6 X 6				32.2	100.1/22750	118.6	2.60
AL688		8 X 8				42.2	133.4/30317	156.6	3.49
AL822	25.4	2 X 2	20.5	3.25	7.92	16.0	56.7/12886	68.6	1.54
AL844		4 X 4				29.4	113.4/25773	135.6	3.00
AL866		6 X 6				44.2	170.0/38636	202.3	4.46
AL1022	31.75	2 X 2	25.6	4.0	9.53	19.6	88.5/20114	107.1	2.37
AL1044		4 X 4				36.4	177.0/40227	203.6	4.68
AL1066		6 X 6				52.3	265.0/60227	315.3	7.20
AL1088		8 X 8				68.5	354.0/80454	421.2	9.94
AL1222	38.1	2 X 2	30.5	4.8	11.10	24.3	127.0/28864	151.1	3.65
AL1244		4 X 4				43.8	254.0/57727	299.7	7.05
AL1266		6 X 6				63.2	381.0/86591	426.3	10.50
AL1288		8 X 8				82.6	508.0/11545	568.4	14.03
AL1444		4 X 4				51.3	372.7/84705	413.6	10.34
AL1466	6 X 6	74.56	559.0/127045	620.4	15.16				
AL1644	50.8	4 X 4	41.6	6.4	14.21	58.0	471.0/107045	522.8	12.98
AL1666		6 X 6				83.8	706.0/160454	783.6	19.76
AL1688		8 X 8				109.5	942.0/214090	1045.5	25.47

板式鏈
Leaf chains



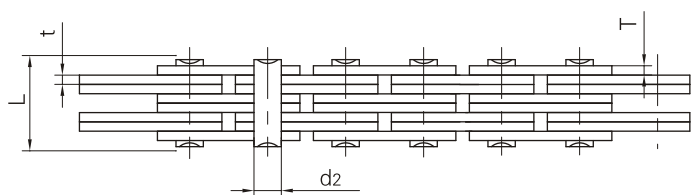
鏈板組合
Plate lacing



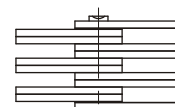
2x2



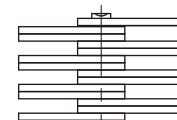
3x4



4x4



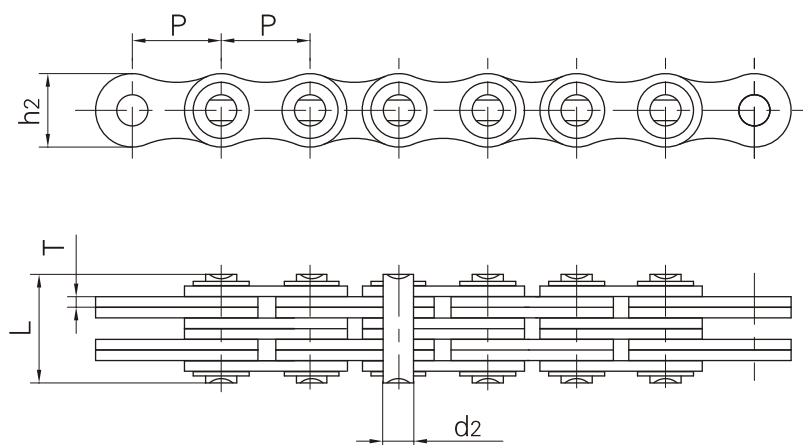
6x6



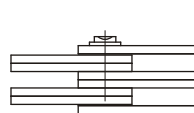
8x8

Vision Chain No.	节距	链板组合 plate lacing	链板高度 Plate depth	链板厚度 Plate thickness	销轴直径 Pin diameter	销轴长度 Pin length	极限拉伸载荷 Ultimate tensile strength	平均拉伸载荷 Average tensile strength	每米长重 Weight per meter
	Pitch								
	P mm								
AL0522	8.000	2x2	7.1	0.8	2.31	5.0	4.4/990	4.6	0.15
AL0544		4x4				8.2	8.8/1980	9.3	0.28
AL322F1	9.525	2x2	7.0	1.3	3.58	7.5	9.3/2092	9.8	0.22
AL344F1		4x4				12.8	18.5/4162	19.4	0.42
AL366F1		6x6				18.2	27.8/6254	29.2	0.62
AL388F1		8x8				23.6	37.0/8323	38.8	0.82
AL866F1	25.400	6x6	20.5	3.0	7.92	40.3	135.0/30370	148.5	4.40
AL1266F1	38.100	6x6	30.0	4.8	13.30	64.3	420.0/94482	462.0	9.68
BL866F1	25.400	6x6	24.1	3.1/4.0	10.85	45.7	200.0/44992	220.0	6.14
BL834F2		3x4				29.5	120.0/26995	132.0	3.76
BL834F3	25.400	3x4	24.1	4.0	10.90	32.9	142.0/31944	156.2	4.44
BL866F3		6x6				52.2	253.6/57050	279.0	7.48
BL834F5		3x4		3.1/4.0		28.0	120.0/26995	132.0	3.64
BL866F5		6x6		3.3/4.0		45.3	200.0/44992	220.0	4.94
LL1622F6	25.400	2x2	20.0	3.0	8.28	15.6	58.0/13047	63.8	1.40
LH3288F1	50.800	8x8	47.8	6.9	20.20	122.0	1200.0/269950	1320.0	33.53
LH3266F2	50.800	6x6	48.2	7.0	17.46	91.8	867.0/195040	953.7	24.52
LL3244F2	50.800	4x4	43.1	6.0	17.76	54.0	520.0/116978	572.0	12.62
LL4888H	76.200	8x8	70.0	12.0	36.50	204.0	2630.0/591638	2893.0	83.80

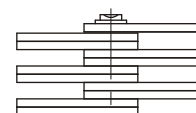
板式鏈
Leaf chains



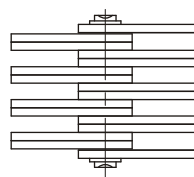
鏈板組合
Plate lacing



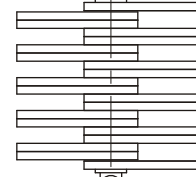
4x4



6x6



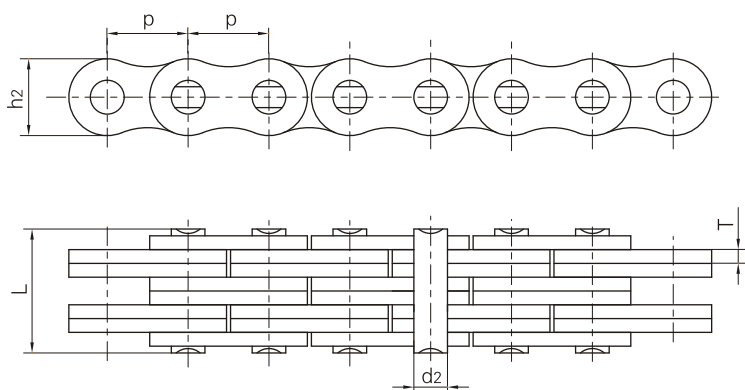
8x8



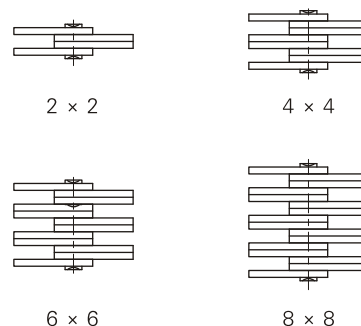
10x10

Vision Chain No.	节距	鏈板組合 plate lacing	鏈板高度	鏈板厚度	销轴直径	销轴长度	极限拉伸载荷	平均拉伸载荷	每米长重
	Pitch		Plate depth	Plate thickness	Pin diameter	Pin length	Ultimate tensile strength	Average tensile strength	Weight per meter
	P		h ₂ max	T max	d ₂ max	L max	Q min	Q ₀	q
	mm		mm	mm	mm	mm	kN/LB	kN	kg/m
BL1266F1	38.100	6×6	35.7	5.6	12.70	78.9	453.7/102063	499.0	15.69
BL1666F4	50.800	6×6	48.2	7.2	17.46	99.2	867.0/195040	953.7	27.27
LL3244F1	50.800	4×4	42.0	6.0	17.81	61.6	520.0/116978	572.0	12.90
LL3266F1		6×6				86.0	780.0/175467	858.0	18.90
LL3288F1		8×8				110.0	1040.0/233956	1144.0	24.89
LL321010F1		10×10				134.3	1300.0/292445	1430.0	30.89
LL3244F3	50.800	4×4	43.1	6.0	17.76	60.0	520.0/116978	572.0	13.06
LL3266F3		6×6				84.4	780.0/175467	858.0	19.44
LL3288F3		8×8				108.6	1040.0/233956	1144.0	25.43
LL3244F4	50.800	4×4	42.0	6.4	17.81	67.5	520.0/116980	572.0	13.82
LL3266F4		6×6				92.8	780.0/175467	858.0	20.17

板式鏈
Leaf chains

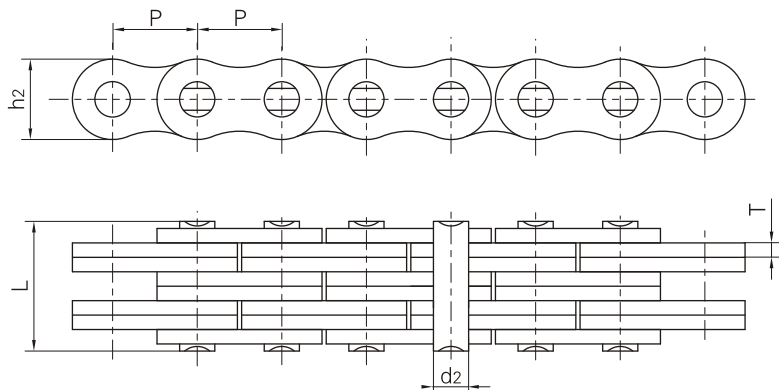


鏈板組合
Plate lacing



DIN/ISO 鏈號	節距 Pitch	鏈板組合 Plate lacing	鏈板高度 Plate depth	鏈板厚度 Plate thickness	銷軸直徑 Pin diameter	銷軸長度 Pin length	極限拉伸載荷 Ultimate tensile strength	平均拉伸載荷 Average tensile strength	每米長重 Weight per meter
DIN/ISO Chain No.	P		h ₂ max	T max	d ₂ max	L max	Q min	Q ₀	q
	mm		mm	mm	mm	mm	kN/LB	kN	kg/m
LL0822	12.7	2 × 2	10.6	1.6	4.45	8.9	18.2/4094	20.4	0.42
LL0844		4 × 4				15.6	36.4/8188	40.7	0.84
LL0866		6 × 6				22.0	54.6/12283	60.0	1.24
LL0888		8 × 8				28.5	72.8/16378	80.0	1.64
LL1022	15.875	2 × 2	13.7	1.6	5.08	9.2	22.7/5107	25.5	0.54
LL1044		4 × 4				15.8	45.4/10213	51.0	1.06
LL1066		6 × 6				22.1	68.1/15321	76.3	1.57
LL1088		8 × 8				28.8	90.8/20427	101.9	2.10
LL1222	19.05	2 × 2	16.0	1.85	5.72	10.4	29.5/6637	33.2	0.73
LL1244		4 × 4				17.9	59.0/13273	66.4	1.44
LL1266		6 × 6				25.4	88.5/19910	99.7	2.15
LL1288		8 × 8				32.9	118.0/26547	132.9	2.84
LL1622	25.4	2 × 2	21.0	3.1	8.28	17.2	58.0/13182	66.7	1.52
LL1644		4 × 4				29.6	116.0/26363	140.0	2.90
LL1666		6 × 6				42.4	174.0/39545	208.8	4.30
LL1688		8 × 8				54.9	232.0/52726	278.0	5.71
LL2022	31.75	2 × 2	26.4	3.5	10.19	20.1	95.0/21591	109.2	2.33
LL2044		4 × 4				33.8	190.0/43182	218.5	4.40
LL2066		6 × 6				50.1	285.0/64773	324.6	6.79
LL2088		8 × 8				64.0	380.0/86363	435.1	8.90

板式鏈
Leaf chains



鏈板組合
Plate lacing



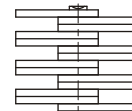
2x2



4x4



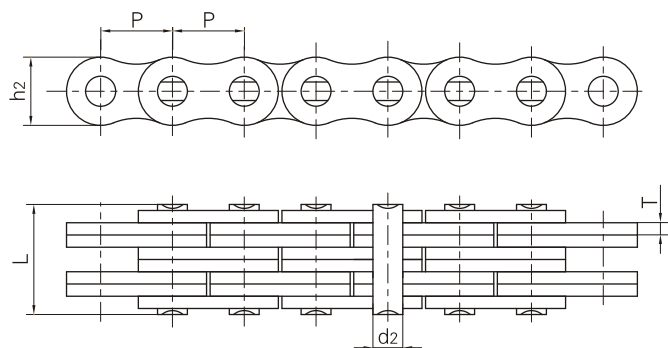
6x6



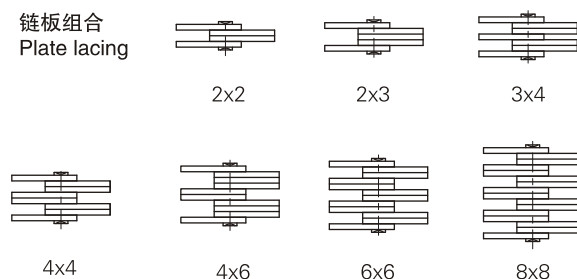
8x8

DIN/ISO 鏈號	節距 Pitch	鏈板組合 Plate lacing	鏈板高度 Plate depth	鏈板厚度 Plate thickness	銷軸直徑 Pin diameter	銷軸長度 Pin length	極限拉伸載荷 Ultimate tensile strength	平均拉伸載荷 Average tensile strength	每米長重 Weight per meter
DIN/ISO Chain No.	P		h ₂ max	T max	d ₂ max	L max	Q min	Q ₀	q
	mm		mm	mm	mm	mm	kN/LB	kN	kg/m
LL2422	38.1	2 × 2	33.4	5.0	14.63	28.4	170.0/38363	195.5	4.47
LL2444		4 × 4				46.3	340.0/77273	380.8	8.22
LL2466		6 × 6				66.4	510.0/115909	571.2	12.22
LL2488		8 × 8				86.6	680.0/154545	775.2	16.30
LL2822	44.45	2 × 2	37.08	6.0	15.90	32.2	200.0/45455	224.0	5.10
LL2844		4 × 4				56.4	400.0/90909	448.0	9.90
LL2866		6 × 6				80.8	600.0/136363	672.0	14.60
LL2888		8 × 8				105.2	800.0/181818	896.0	19.40
LL3222	50.80	2 × 2	42.0	6.4	17.81	34.8	260.0/59091	291.2	6.20
LL3244		4 × 4				60.6	520.0/118182	582.4	12.30
LL3266		6 × 6				86.4	780.0/177272	873.6	18.30
LL3288		8 × 8				112.2	1040.0/233970	1176.0	24.00
LL4022	63.50	2 × 2	52.76	8.0	22.89	42.2	360.0/81818	403.2	10.30
LL4044		4 × 4				74.4	780.0/177273	873.6	20.00
LL4066		6 × 6				106.5	1080.0/245454	1209.6	30.00
LL4088		8 × 8				140.0	1440.0/323959	1747.2	39.10
LL4822	76.20	2 × 2	63.88	10.0	29.24	54.6	560.0/127272	627.2	18.50
LL4844		4 × 4				92.6	1120.0/254545	1554.4	35.70
LL4866		6 × 6				133.4	1680.0/377953	1880.0	53.00
LL4888		8 × 8				174.2	2240.0/509091	2508.8	70.40

板式鏈
Leaf chains

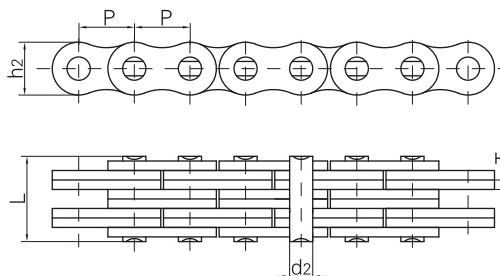


鏈板組合
Plate lacing

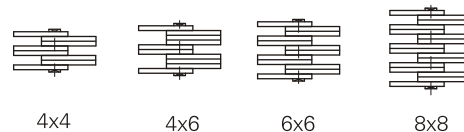


ISO 鏈號 ISO Chain No.	ANSI 鏈號 ANSI Chain No.	節距 Pitch P mm	鏈板組合 Plate lacing	鏈板高度 Plate depth h2 max mm	鏈板厚度 Plate thickness T max mm	銷軸直徑 Pin diameter d2 max mm	銷軸長度 Pin length L max mm	極限拉伸載荷 Ultimate tensile strength Q min kN/LB	平均拉伸載荷 Average tensile strength Q0 kN	每米長重 Weight per meter q kg/m
LH0822	BL422	12.7	2 × 2	12.07	2.08	5.09	11.05	22.2/5045	27.6	0.64
LH0823	BL423		2 × 3				13.16	22.2/5045	27.6	0.80
LH0834	BL434		3 × 4				17.40	33.4/7591	41.4	1.12
LH0844	BL444		4 × 4				19.51	44.5/10114	56.0	1.28
LH0846	BL446		4 × 6				23.75	44.5/10114	56.0	1.60
LH0866	BL466		6 × 6				27.99	66.7/15159	81.7	1.92
LH0888	BL488		8 × 8				36.45	89.0/20227	109.4	2.56
LH1022	BL522	15.875	2 × 2	15.09	2.44	5.96	12.90	33.4/7591	43.1	0.88
LH1023	BL523		2 × 3				15.37	33.4/7591	43.1	1.10
LH1034	BL534		3 × 4				20.32	48.9/11114	65.6	1.50
LH1044	BL544		4 × 4				22.78	66.7/15159	84.5	1.80
LH1046	BL546		4 × 6				27.74	66.7/15159	84.5	2.20
LH1066	BL566		6 × 6				32.69	100.1/22750	125.1	2.65
LH1088	BL588		8 × 8				42.57	133.4/30318	169.5	3.50
LH1222	BL622	19.05	2 × 2	18.11	3.30	7.94	17.37	48.9/11114	63.6	1.45
LH1223	BL623		2 × 3				20.73	48.9/11114	63.6	1.80
LH1234	BL634		3 × 4				27.43	75.6/17181	102.8	2.50
LH1244	BL644		4 × 4				30.78	97.9/22250	120.9	2.90
LH1246	BL646		4 × 6				37.49	97.9/22250	120.9	3.60
LH1266	BL666		6 × 6				44.20	146.8/33364	190.8	4.30
LH1288	BL688		8 × 8				57.61	195.7/44477	238.8	5.80
LH1622	BL822	25.4	2 × 2	24.13	4.09	9.54	21.34	84.5/19204	108.2	2.20
LH1623	BL823		2 × 3				25.48	84.5/19204	108.2	2.70
LH1634	BL834		3 × 4				33.76	129.0/29318	170.0	3.80
LH1644	BL844		4 × 4				37.90	169.0/38409	214.6	4.30
LH1646	BL846		4 × 6				46.18	169.0/38409	214.6	5.40
LH1666	BL866		6 × 6				54.46	253.6/57636	324.5	6.50
LH1688	BL888		8 × 8				71.02	338.1/76841	432.7	8.60

板式鏈
Leaf chains



鏈板組合
Plate lacing



ISO 鏈號 ISO Chain No.	ANSI 鏈號 ANSI Chain No.	節距 Pitch P mm	鏈板組合 Plate lacing	鏈板高度 Plate depth h ₂ max mm	鏈板厚度 Plate thickness T max mm	銷軸直徑 Pin diameter d ₂ max mm	銷軸長度 Pin length L max mm	極限拉伸載荷 Ultimate tensile strength Q min kN/LB	平均拉伸載荷 Average tensile strength Q ₀ kN	每米長重 Weight per meter q kg/m
LH2022	BL1022	31.75	2 × 2	30.18	4.9	11.11	25.37	115.6/26272	150.8	3.40
LH2023	BL1023		2 × 3				30.33	115.6/26272	150.8	4.30
LH2034	BL1034		3 × 4				40.23	182.4/41454	231.6	6.00
LH2044	BL1044		4 × 4				45.19	231.3/52568	291.4	6.90
LH2046	BL1046		4 × 6				55.09	231.3/52568	291.4	8.60
LH2066	BL1066		6 × 6				65.00	347.0/78863	430.3	10.30
LH2088	BL1088		8 × 8				84.81	462.6/105136	555.1	13.80
LH2422	BL1222	38.1	2 × 2	36.20	5.77	12.71	29.62	151.2/34363	192.0	4.6
LH2423	BL1223		2 × 3				35.43	151.2/34363	192.0	5.8
LH2434	BL1234		3 × 4				47.07	244.6/55591	315.9	8.1
LH2444	BL1244		4 × 4				52.88	302.5/68750	381.1	9.3
LH2446	BL1246		4 × 6				64.52	302.5/68750	381.1	11.6
LH2466	BL1266		6 × 6				76.15	453.7/103113	543.6	13.9
LH2488	BL1288		8 × 8				99.42	605.0/137500	726.0	18.6
LH2822	BL1422	44.45	2 × 2	42.24	6.55	14.29	33.55	191.3/43477	225.7	6.1
LH2823	BL1423		2 × 3				40.16	191.3/43477	225.7	7.6
LH2834	BL1434		3 × 4				53.37	315.8/71772	372.6	10.6
LH2844	BL1444		4 × 4				59.97	382.6/86954	451.2	12.2
LH2846	BL1446		4 × 6				73.18	382.6/86954	451.2	15.2
LH2866	BL1466		6 × 6				86.39	578.3/131431	682.4	18.2
LH2888	BL1488		8 × 8				112.8	765.1/173886	902.8	24.3
LH3222	BL1622	50.8	2 × 2	48.26	7.52	17.46	39.01	289.1/65704	341.1	8.0
LH3223	BL1623		2 × 3				46.58	289.1/65704	341.1	10.0
LH3234	BL1634		3 × 4				61.72	440.4/100091	519.6	14.0
LH3244	BL1644		4 × 4				69.29	573.8/131431	680.4	16.0
LH3246	BL1646		4 × 6				84.43	578.3/131431	680.4	20.0
LH3266	BL1666		6 × 6				99.57	857.4/194863	1000.7	24.0
LH3288	BL1688		8 × 8				129.84	1156.5/262841	1364.6	32.0
LH4022	BL2022	63.5	2 × 2	60.33	9.91	23.81	51.74	433.7/98568	511.7	15.8
LH4023	BL2023		2 × 3				61.70	433.7/98568	511.7	19.8
LH4034	BL2034		3 × 4				81.61	649.4/147590	766.2	27.7
LH4044	BL2044		4 × 4				91.57	867.4/197163	1023.5	31.6
LH4046	BL2046		4 × 6				111.48	867.4/197163	1023.5	39.5
LH4066	BL2066		6 × 6				131.39	1301.1/295704	1535.2	47.4
LH4088	BL2088		8 × 8				171.22	1734.8/394272	2046.5	63.2