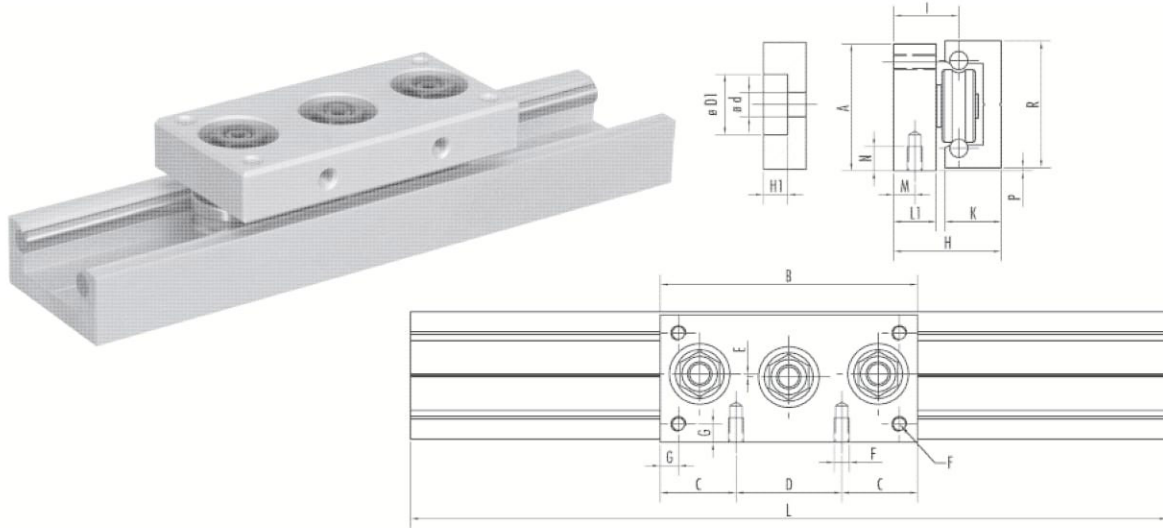


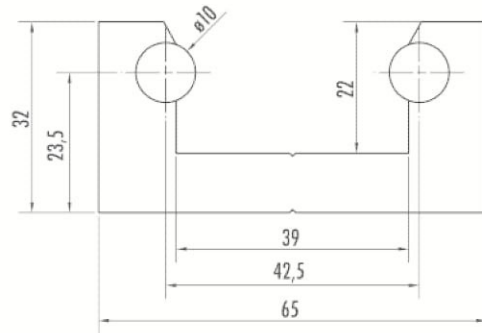
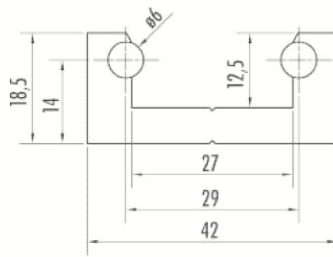
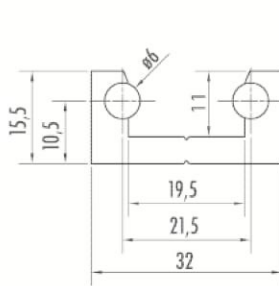
## CI TYPE



CI32

CI42

CI65



Code		Type		A	B	C	D	D1	dH10	E	F	G	H	H1	I	K	L1	M	N	P	R	Lmax
Rail	Block	Rail	Block	(mm)																		
83.036.001	83.037.001	CI 32	MI 32	32	65	20,5	24	16	5	0,5	M4	4	28,5	6	18	15,5	11	5,5	6	0,5	32	6000
83.036.002	83.037.002	CI 42	MI 42	42	85	25	35	20	8	1	M5	6	35,5	8	21,5	18,5	14	7	8	1	42	6000
83.036.003	83.037.003	CI 65	MI 65	65	115	27,5	60	26	10	1,2	M6	10	57,5	14	34	32	24	14	10	1,2	65	6000

**Running parameters**

Max speed: 3 m/s

Max acceleration: 7 m/s<sup>2</sup>

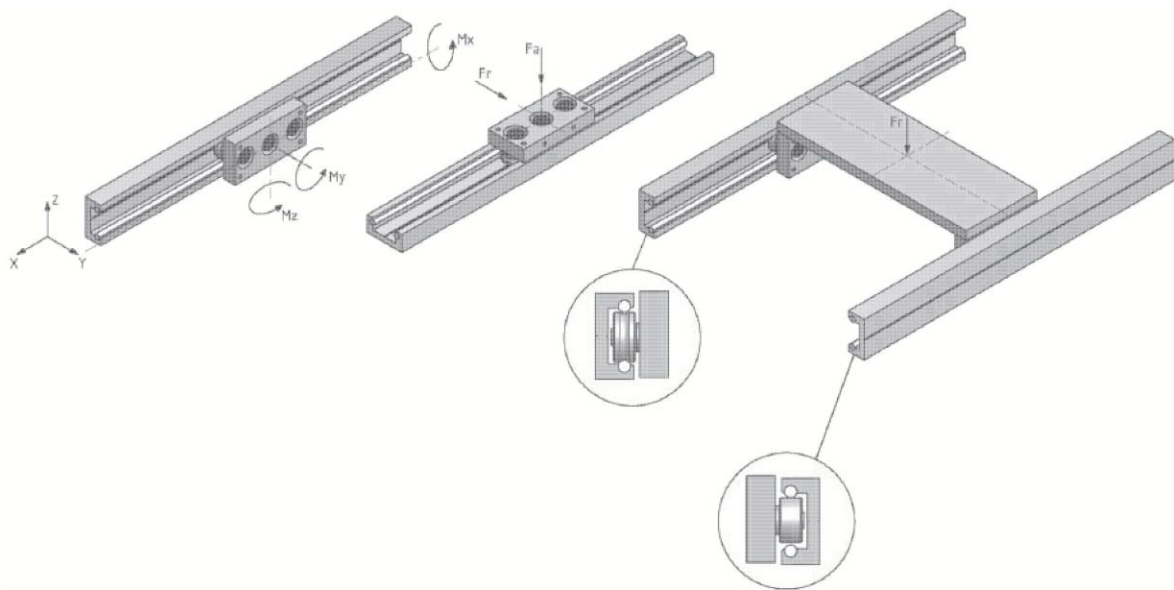
Working temperature: -20 °C+80 °C

**Material**

Rail: anodized aluminium alloy body with Chrome-pated steel shafts

Block: anodized aluminium alloy plate

Roller: double row ball bearings in steel

*Loads which affects the block*

Components			Load						Moment of inertia		Weight	
Guide	Trolley	Wheel	Single					Double	LX	LY	Guide (kg/m)	Trolley (kg)
			Mx (Nm)	My (Nm)	Mz (Nm)	Fa (N)	Fr (N)	Fr (N)	(cm <sup>4</sup> )			
CI32	MI32	C5/17-E5/17	3,5	10	5,8	320	1020	2040	3,66	0,61	1,08	0,088
CI42	MI42	C8/24-E8/24	7,6	26	15	510	1740	3480	9,61	1,31	1,52	0,227
CI65	MI65	C10/35-E10/35	26	78	45	1200	4000	8000	62,60	10,33	4,15	0,745